

Technische Daten • Technical Data
Caractéristiques techniques • Dati tecnici
Datos técnicos • Технические данные





Inhaltsverzeichnis
Table of content
Tables des matières · Indice
Contenido · Оглавление

Inhaltsverzeichnis

| | |
|-------------------------------------|---------|
| Maße | 4 – 8 |
| Krandaten, Geschwindigkeiten | 9 |
| Transportplan | 10 – 12 |
| Auslegersysteme | 13 – 14 |
| Traglasten am SDBW2-Auslegersystem | 15 |
| Traglasten am SDB-Auslegersystem | 16 – 17 |
| Traglasten am SDB2-Auslegersystem | 18 – 19 |
| Traglasten am SDWB-Auslegersystem | 20 – 25 |
| Traglasten am SDWB2-Auslegersystem | 26 – 31 |
| Traglasten am SDWVB-Auslegersystem | 32 – 33 |
| Traglasten am SDWVB2-Auslegersystem | 34 – 35 |

Table of content

| | |
|------------------------------------|---------|
| Dimensions | 4 – 8 |
| Crane data, Hooks blocks and hooks | 9 |
| Transportation plan | 10 – 12 |
| Boom/jib combinations | 13 – 14 |
| Lifting capacities on SDBW2 boom | 15 |
| Lifting capacities on SDB boom | 16 – 17 |
| Lifting capacities on SDB2 boom | 18 – 19 |
| Lifting capacities on SDWB boom | 20 – 25 |
| Lifting capacities on SDWB2 boom | 26 – 31 |
| Lifting capacities on SDWVB boom | 32 – 33 |
| Lifting capacities on SDWVB2 boom | 34 – 35 |

Tables des matières

| | |
|--|---------|
| Encombrement | 4 – 8 |
| Crane data, Organes de préhension | 9 |
| Plan de transport | 10 – 12 |
| Configurations de flèche | 13 – 14 |
| Forces de levage en configuration SDBW2 | 15 |
| Forces de levage en configuration SDB | 16 – 17 |
| Forces de levage en configuration SDB2 | 18 – 19 |
| Forces de levage en configuration SDWB | 20 – 25 |
| Forces de levage en configuration SDWB2 | 26 – 31 |
| Forces de levage en configuration SDWVB | 32 – 33 |
| Forces de levage en configuration SDWVB2 | 34 – 35 |

Inhaltsverzeichnis
Table of content
Tables des matières · Indice
Contenido · Оглавление

Indice

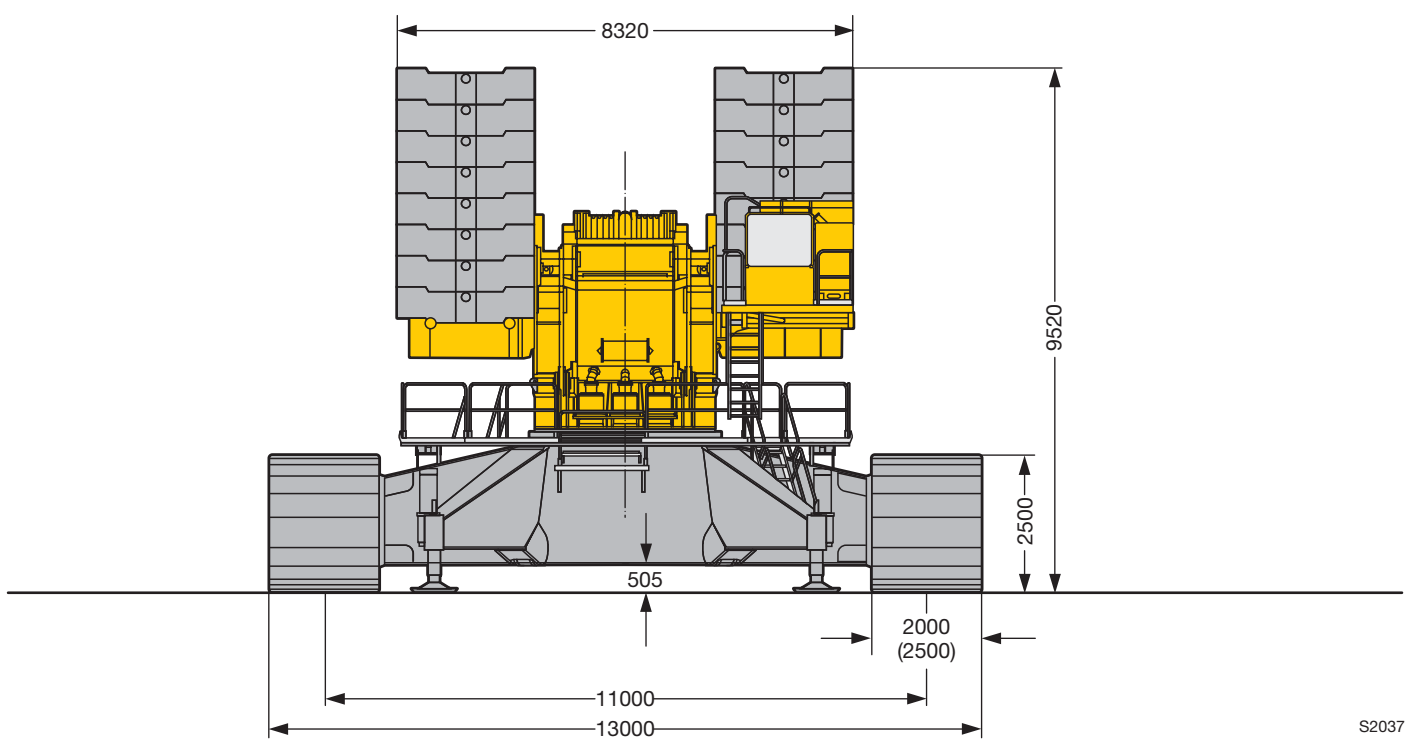
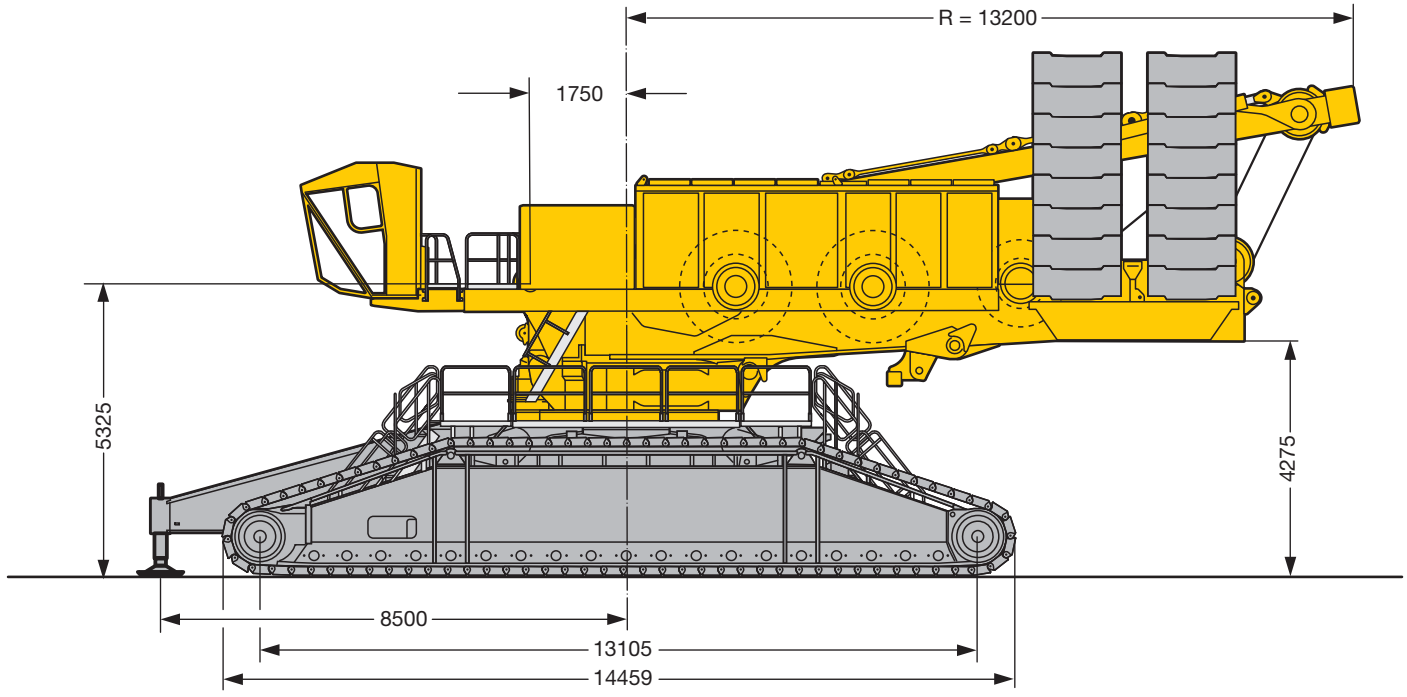
| | |
|---------------------------------------|---------|
| Dimensioni | 4 – 8 |
| Dati gru, Mezzo di accoglienza carico | 9 |
| Piano di trasporto | 10 – 12 |
| Sistemi braccio | 13 – 14 |
| Portate su braccio SDBW2 | 15 |
| Portate su braccio SDB | 16 – 17 |
| Portate su braccio SDB2 | 18 – 19 |
| Portate su braccio SDWB | 20 – 25 |
| Portate su braccio SDWB2 | 26 – 31 |
| Portate su braccio SDWVB | 32 – 33 |
| Portate su braccio SDWVB2 | 34 – 35 |

Contenido

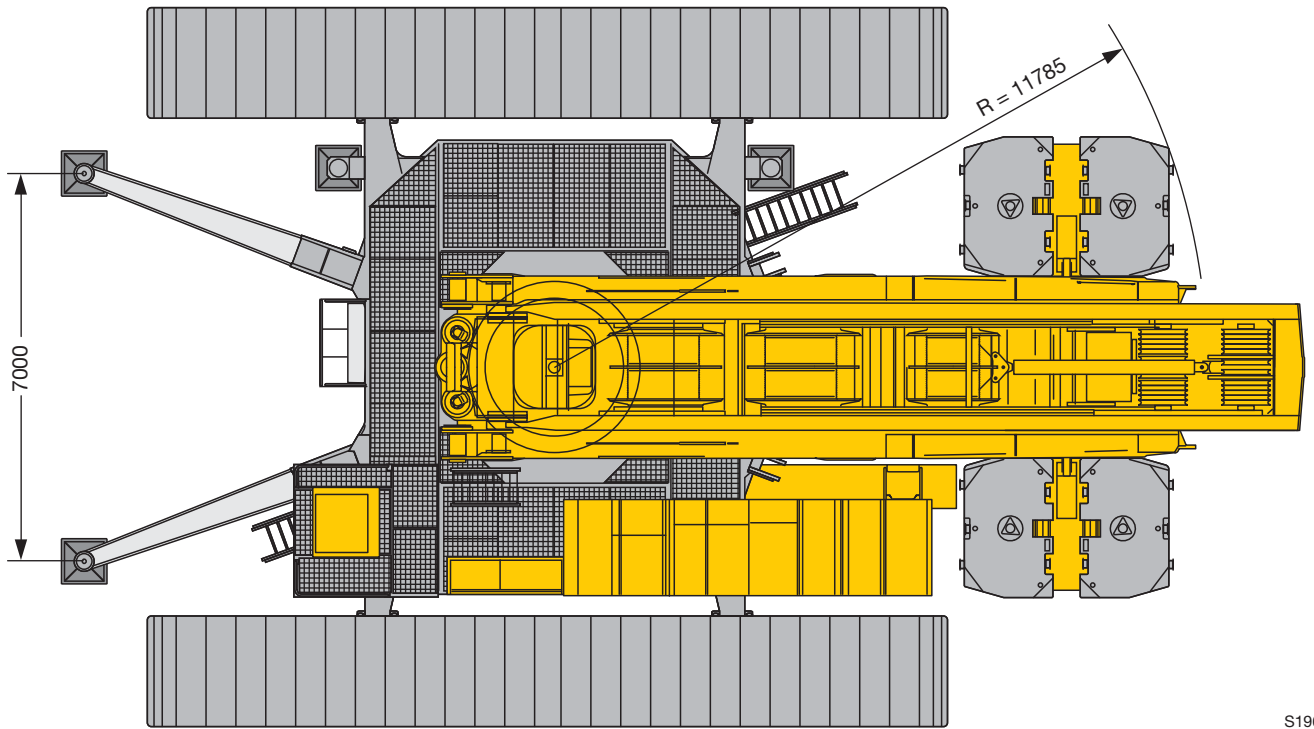
| | |
|----------------------------------|---------|
| Dimensiones | 4 – 8 |
| Características, Pastecas | 9 |
| Esquema de transporte | 10 – 12 |
| Sistemas de pluma | 13 – 14 |
| Tablas de carga con pluma SDBW2 | 15 |
| Tablas de carga con pluma SDB | 16 – 17 |
| Tablas de carga con pluma SDB2 | 18 – 19 |
| Tablas de carga con pluma SDWB | 20 – 25 |
| Tablas de carga con pluma SDWB2 | 26 – 31 |
| Tablas de carga con pluma SDWVB | 32 – 33 |
| Tablas de carga con pluma SDWVB2 | 34 – 35 |

Оглавление

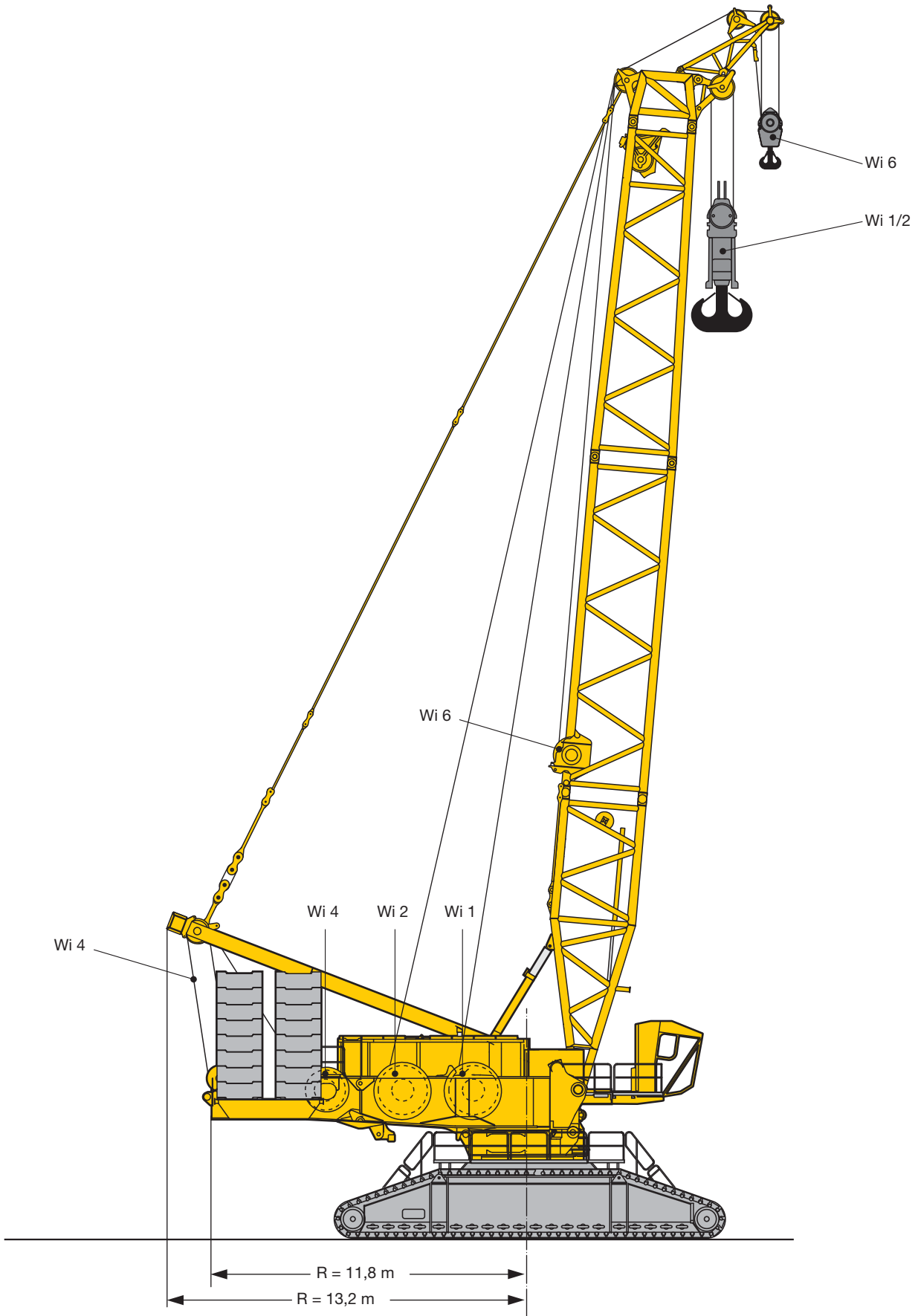
| | |
|---|---------|
| Размеры | 4 – 8 |
| Технические характеристики крана, Грузозахватные органы | 9 |
| Транспортная схема | 10 – 12 |
| Стреловые системы | 13 – 14 |
| Грузоподъемность на SDBW2-стреле | 15 |
| Грузоподъемность на SDB-стреле | 16 – 17 |
| Грузоподъемность на SDB2-стреле | 18 – 19 |
| Грузоподъемность на SDWB-стреле | 20 – 25 |
| Грузоподъемность на SDWB2-стреле | 26 – 31 |
| Грузоподъемность на SDWVB-стреле | 32 – 33 |
| Грузоподъемность на SDWVB2-стреле | 34 – 35 |



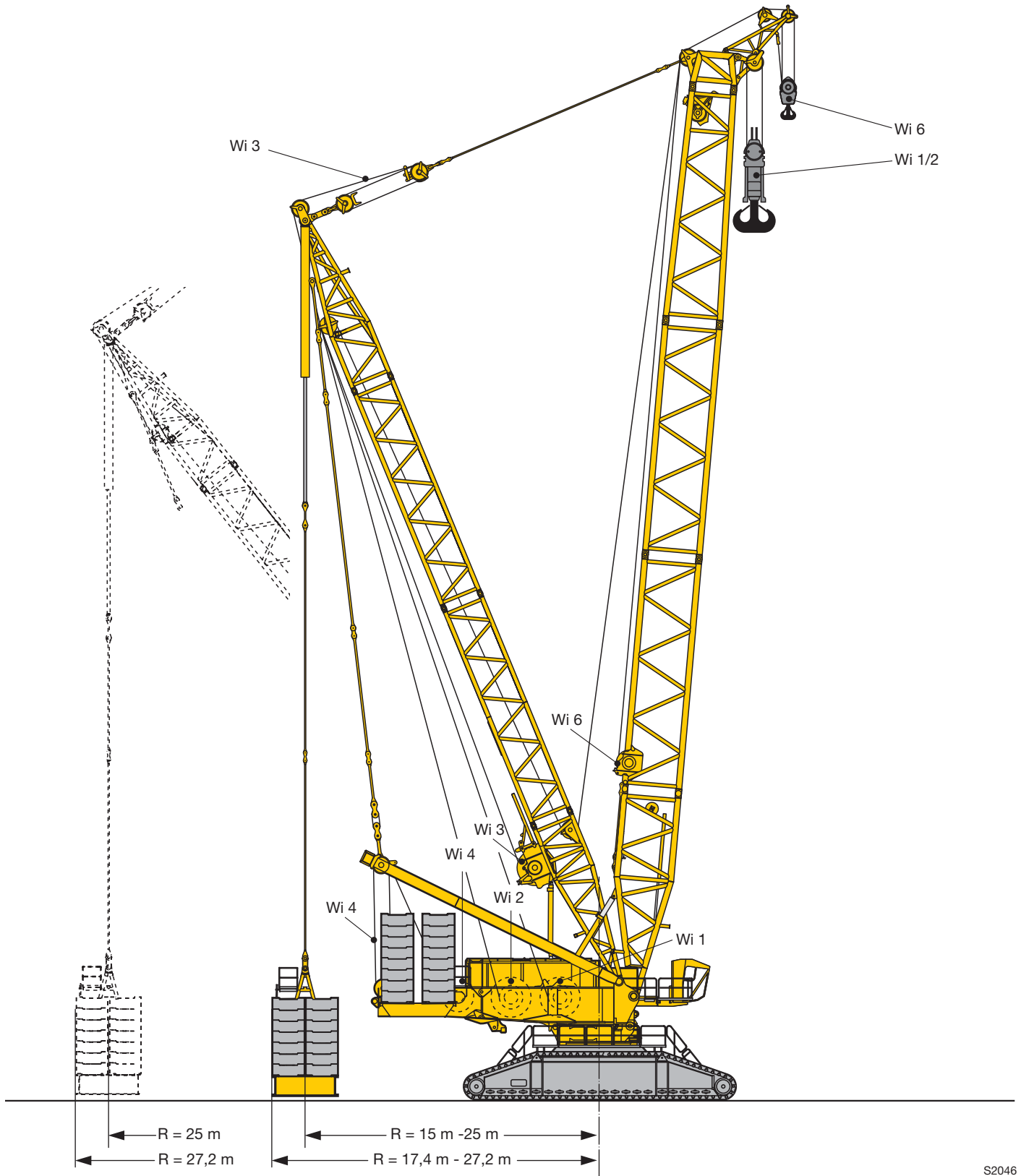
S2037



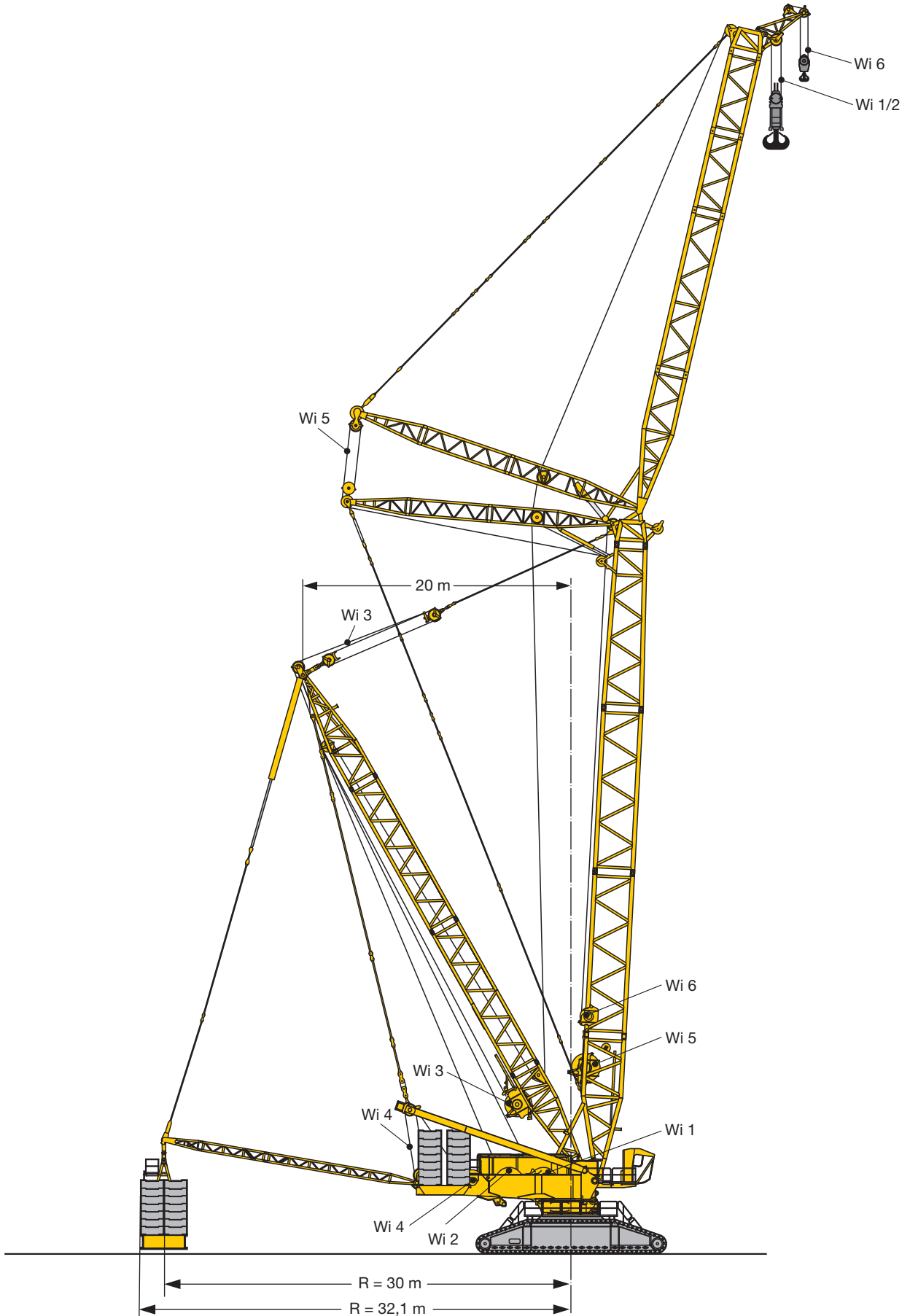
S1960



S 2045



S2046



S2047

Krandaten
Crane data
Dates de la grue · Dati gru
Características · Технические характеристики крана

| Antriebe · Drive Mécánismes · Meccanismi Accionamiento · Приводы | Geschwindigkeiten · Working speeds Witesses · Velocità Velocidades · Скорости | Max. Seilzug · Max. single line pull Effort au brin maxi · Mass. tiro diretto fune Tiro máx. en cable · Макс. тяговое усилие | Seil Ø / Seillänge · Rope diameter / length Diamètre / Longueur du câble · Diametro / lunghezza fune Diámetro / longitud cable · Диаметр / длина троса |
|--|---|--|--|
| | 0 – 136 | 310 kN | 38 mm / 1500 m |
| | 0 – 136 | 310 kN | 38 mm / 1500 m |
| | 0 – 150 | | |
| | 0 – 2 x 81 | | |
| | 0 – 136 | | |
| | 0 – 156 | 160 kN | 28 mm / 1000 m |

Geschwindigkeiten
Working speeds
Vitesses · Velocità
Velocidades · Скорости

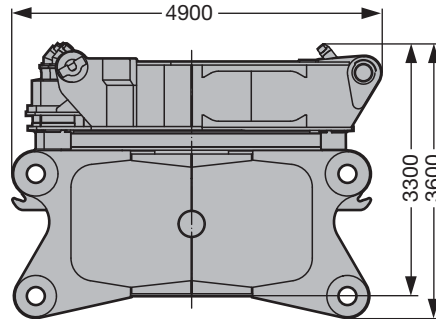
| | | |
|--|---|----------------------------------|
| | Drehgeschwindigkeiten · Slewing speeds Vitesses d'orientation · Velocità di rotazione Velocidades de giro · Скорости вращения | 0 - 82 min ⁻¹ /об/мин |
| | Fahrgeschwindigkeiten · Travel speeds Vitesses de translation · Velocità di trasferimento Velocidades de traslación · Скорости хода | 0 - 1,08 |
| | Max. Lastmoment · Max. rating Couple de charge maxi · Max. momento di carico Momento de carga máx. · Макс. грузовой момент | 22748 tm |

Transportplan
Transportation plan
Plan de transport · Piano di trasporto
Esquema de transporte · Транспортная схема

Raupenmittelteil mit Dreheinrichtung (3 Drehwerke)
 Crawler middle section with rotating (3 slewing gears)
 Partie centrale des chenilles avec système de rotation
 (3 mécanismes d'orientation)

Sezione cingolo centrale con motore di rotazione (3 ralle)
 Chasis de las cadenas con sistema giratorio (3 reductores de giro)
 Гусеничная тележка с поворотным устройством
 (3 механизма поворота)

43 t

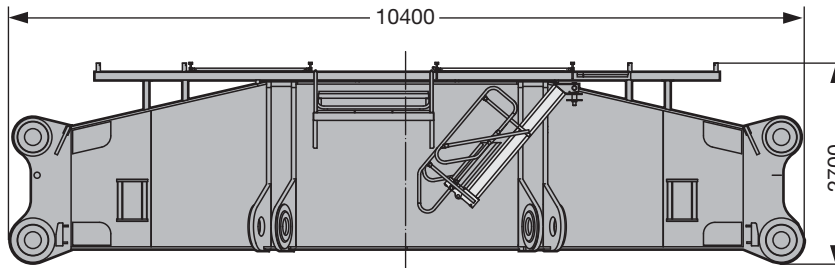


Breite / width / largeur / larghezza / anchura / ширина 3,5 m

Querträger
 Cross-beam
 Traverse

Traversa
 Viga central
 Поперечная часть

2 x 45 t

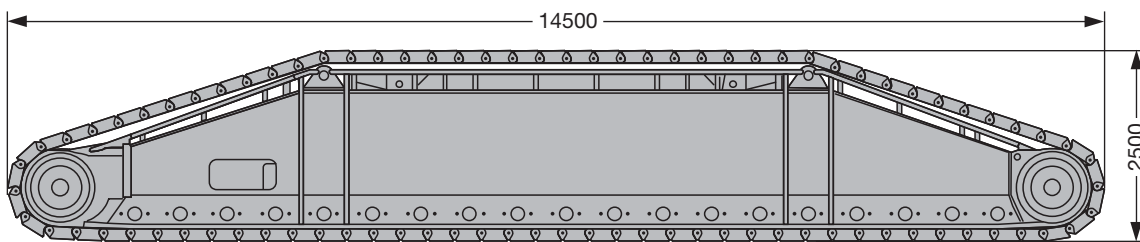


Breite / width / largeur / larghezza / anchura / ширина 2,55 m

Raupenträger mit 2 Fahrantrieben
 Crawler incl. 2 driving gears
 Longeron avec 2 mécanismes de translation

Cingoli con 2 motori di trazione
 Cadenas – incluidos 2 motores de traslación –
 Гусеничный движитель с 2-мя ходовыми приводами

2 x



Breite / width / largeur / larghezza / anchura / ширина 2 m/2,5 m

| | 2,0 m | 2,5 m |
|---|--------------|--------------|
| mit Bodenplatten / with crawler shoes / avec tuiles / con piastre cingoli / con planchas para apoyos / с траками | 70,5 t | 83,5 t |
| ohne Bodenplatten / without crawler shoes / sans tuiles / senza piastre cingoli / sin planchas para apoyos / без траков | 38,5 t | 38,5 t |
| Bodenplatten / crawler shoes / tuiles / piastre cingoli / planchas / Траки | 31,5 t | 45,0 t |

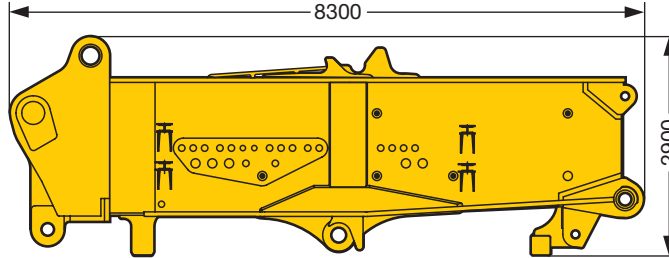
S2038

Transportplan
Transportation plan
Plan de transport · Piano di trasporto
Esquema de transporte · Транспортная схема

Drehbühne Vorderteil (ohne Hubwinde)
 Slewing platform, front part (without hoist winch)
 Avant de la partie tournante (sans treuil de levage)

Piattaforma girevole, parte frontale (senza argano)
 Parte frontal de superestructura – sin cabrestante de elevación –
 Передняя часть поворотной платформы (без грузовой лебедки)

30,8 t

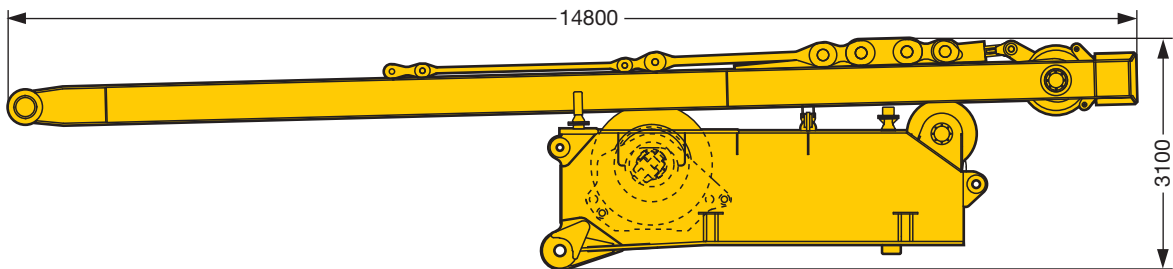


Breite / width / largeur / larghezza / anchura / ширина 3,4 m

Drehbühne Heckteil mit SA-Bock und Winde 4
 Slewing platform, rear part with SA-frame incl. winch 4
 Arrière de la partie tournante avec chevalet SA et treuil 4

Piattaforma girevole, parte posteriore con cavalletto SA e argano 4
 Parte trasera de superestructura con SA-Bock incl. cabrestante 4
 Задняя часть поворотной платформы с SA-стойкой и лебедкой 4

44 t

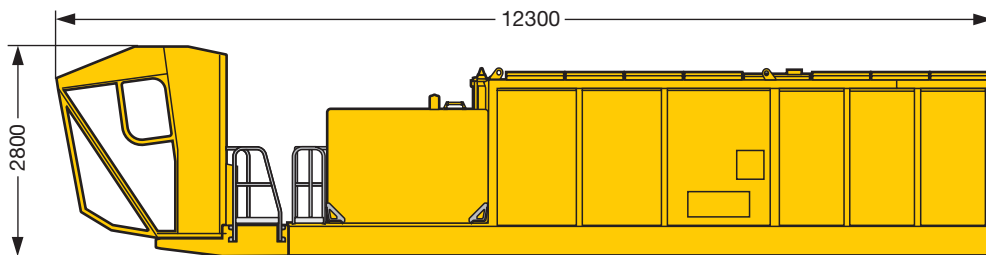


Breite / width / largeur / larghezza / anchura / ширина 3,3 m

Maschinenhaus mit Laufsteg und Kabine
 Machine-room with walk and cabin
 Bâti de la machine avec passerelle et cabine

Corpo macchina con passerella e cabina
 Caja – motor con pasarelas y cabina
 Машинное отделение с мостками и кабиной

17,6 t



Breite / width / largeur / larghezza / anchura / ширина 2,5 m

S2039

Transportplan
Transportation plan
Plan de transport · Piano di trasporto
Esquema de transporte · Транспортная схема

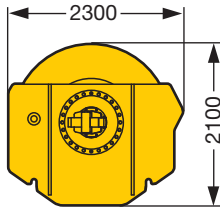
Winde 1
 Winch 1
 Treuil 1

Argano 1
 Cabrestante 1
 Лебедка 1

Winde 2
 Winch 2
 Treuil 2

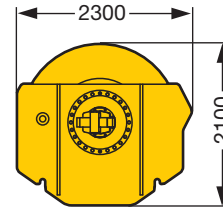
Argano 2
 Cabrestante 2
 Лебедка 2

22,8 t



Breite / width / largeur / larghezza / anchura / ширина 2,3 m

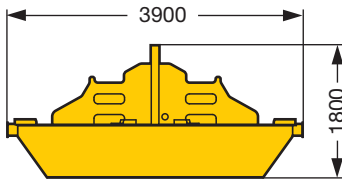
22,8 t



Breite / width / largeur / larghezza / anchura / ширина 2,3 m

Ballastkonsole Drehbühne
 Counterweight bracket superstructure
 Support du contrepoids de la partie tournante
 Supporto zavorra piattaforma girevole
 Soporte de contrapeso de superestructura
 Консоль противовеса поворотной платформы

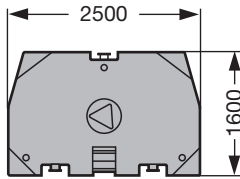
2 x 10,2 t



Breite / width / largeur / larghezza / anchura / ширина 2,5 m

Drehbühnenballast
 Counterweight slabs
 Contrepoids de la partie tournante
 Zavorra piattaforma girevole
 Placas de contrapeso
 Противовес поворотной платформы

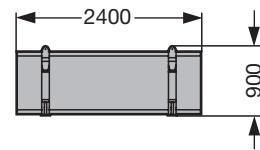
32 x 10 t



Dicke / thick / epaisseur / spessore / grosor / Толщина 0,6 m

Zentralballast
 Center counterweight
 Contrepoids de base
 Zavorra centrale
 Contrapeso central
 Центральный противовес

4 x 7,5 t



Breite / width / largeur / larghezza / anchura / ширина 1,2 m

S2040

Auslegersysteme
Boom/jib combinations
Configurations de flèche · Sistemi braccio
Sistemas de pluma · Стреловые системы

S Hauptausleger, schwer
 Main boom, heavy
 Flèche principale, lourde
 Braccio principale, per carichi pesanti
 Pluma principal, pesada
 Основная стрела, тяжелая

D Derrickausleger
 Derrick
 Flèche derrick
 Braccio Derrick
 Pluma Derrick
 Деррик-стрела

B Schwebeballast
 Suspended ballast
 Lest suspendu
 Zavorra sospesa
 Contrapeso flotante
 Подвесной противовес

SL Hauptausleger, schwer/leicht
 Main boom, heavy/light
 Flèche principale, lourde/légère
 Braccio principale, per carichi pesanti/leggeri
 Pluma principal, pesada / ligera
 Основная стрела, тяжелая/легкая

W Wippbare Gitterspitze, schwer
 Luffing fly jib, heavy
 Flèche, lourde
 Falcone tralicciato a volata variabile, per carichi pesanti
 Pluma abatible, pesada
 Качающийся решетчатый удлинитель, тяжелый

BW Ballastwagen
 Ballast trailer
 Porteur de lest
 Carrello contrappeso
 Carro de contrapeso
 Тележка противовеса



SL

SL 42 m – 102 m

**SLD
 SLDB/BW**

SL 48 m – 144 m
 D 42 m

S

S 30 m – 90 m

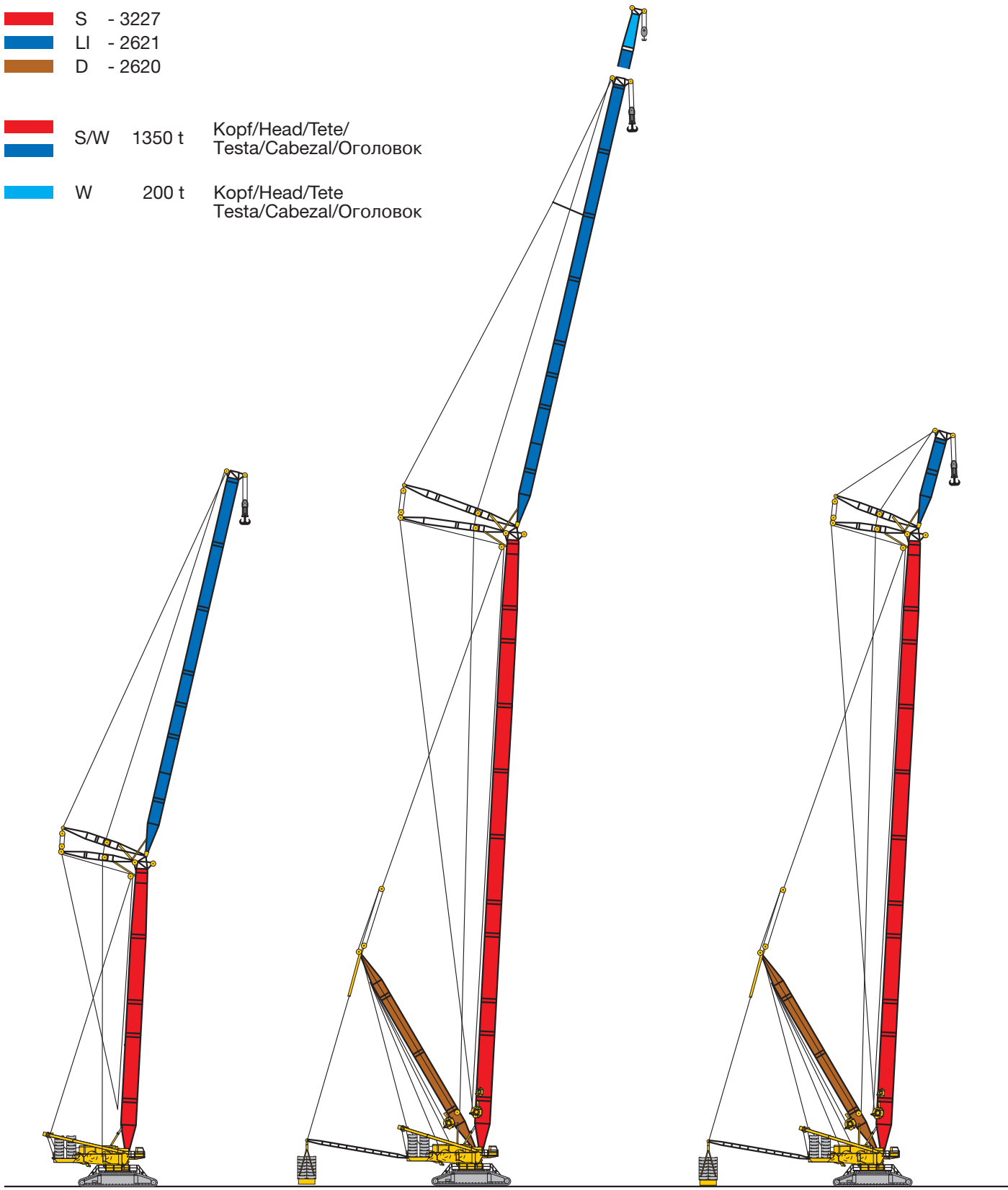
**SD
 SDB/BW**

S 48 m – 150 m

Auslegersysteme
Boom/jib combinations
 Configurations de flèche · Sistemi braccio
 Sistemas de pluma · Стреловые системы

- S - 3227
- LI - 2621
- D - 2620

- S/W 1350 t Kopf/Head/Tete/
Testa/Cabezal/Оголовок
- W 200 t Kopf/Head/Tete/
Testa/Cabezal/Оголовок



SW

auf Anfrage

**SDW
SDWB/BW**

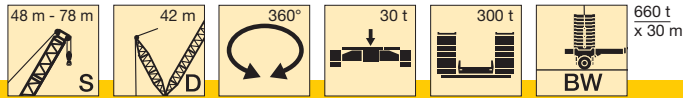
S 48 m – 114 m
 W 36 m – 84 m/114 m
 D 42 m

**SDWV
SDWVB/BW**

S 48 m – 114 m
 WV 12 m – 18 m
 D 42 m

S1968

Traglasten am SDBW2-Auslegersystem
Lifting capacities on SDBW2 boom/derrick combination
Forces de levage en configuration SDBW2 · Portate con sistema braccio SDBW2
Tablas de carga con sistema de pluma SDBW2 · Грузоподъемность на стреловой системе SDBW2

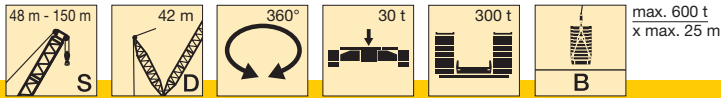


Vorläufig
Préliminaire · Provisorio
Provisional · Временно
Preliminary

| | 48 m | 54 m | 60 m | 66 m | 72 m | 78 m | |
|----|------|------|------|------|------|------|----|
| 10 | 1309 | | | | | | 10 |
| 11 | 1291 | 1335 | | | | | 11 |
| 12 | 1275 | 1319 | 1350 | 1252 | | | 12 |
| 14 | 1249 | 1292 | 1312 | 1248 | 1116 | 981 | 14 |
| 16 | 1228 | 1270 | 1262 | 1216 | 1107 | 972 | 16 |
| 18 | 1211 | 1223 | 1192 | 1158 | 1094 | 963 | 18 |
| 20 | 1133 | 1120 | 1111 | 1082 | 1036 | 945 | 20 |
| 22 | 1034 | 1016 | 1014 | 1001 | 977 | 916 | 22 |
| 24 | 935 | 930 | 917 | 917 | 907 | 886 | 24 |
| 26 | 853 | 850 | 843 | 833 | 835 | 824 | 26 |
| 28 | 787 | 775 | 777 | 769 | 763 | 763 | 28 |
| 30 | 722 | 722 | 711 | 714 | 706 | 701 | 30 |
| 32 | 675 | 670 | 664 | 658 | 659 | 651 | 32 |
| 34 | 631 | 621 | 621 | 613 | 612 | 611 | 34 |
| 36 | 586 | 586 | 578 | 577 | 568 | 571 | 36 |
| 38 | 540 | 550 | 543 | 541 | 538 | 530 | 38 |
| 40 | 494 | 515 | 514 | 505 | 508 | 502 | 40 |
| 44 | 408 | 459 | 457 | 456 | 449 | 449 | 44 |
| 48 | | 393 | 415 | 408 | 408 | 402 | 48 |
| 52 | | | 372 | 373 | 367 | 367 | 52 |
| 56 | | | | 341 | 338 | 332 | 56 |
| 60 | | | | 304 | 309 | 307 | 60 |
| 64 | | | | | 286 | 282 | 64 |
| 68 | | | | | | 262 | 68 |

TAB 190074

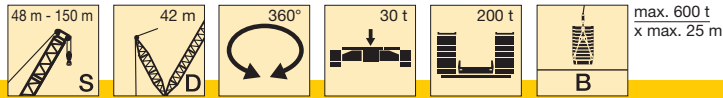
Traglasten am SDB-Auslegersystem
Lifting capacities on SDB boom/derrick combination
Forces de levage en configuration SDB · Portate con sistema braccio SDB
Tablas de carga con sistema de pluma SDB · Грузоподъемность на стреловой системе SDB



Vorläufig
Préliminaire · Provisorio
Provisional · Временно
Preliminary

| | 48 m | 54 m | 60 m | 66 m | 72 m | 78 m | 84 m | 90 m | 96 m | 102 m | 108 m | 114 m | 120 m | 126 m | 132 m | 138 m | 144 m | 150 m | | |
|-----|------|------|------|------|------|------|------|------|------|-------|-------|-------|-------|-------|-------|-------|-------|-------|----|-----|
| 10 | 1250 | | | | | | | | | | | | | | | | | | | 10 |
| 11 | 1250 | 1250 | | | | | | | | | | | | | | | | | | 11 |
| 12 | 1250 | 1250 | 1235 | 1146 | | | | | | | | | | | | | | | | 12 |
| 14 | 1192 | 1215 | 1168 | 1098 | 1016 | 933 | | | | | | | | | | | | | | 14 |
| 16 | 1162 | 1137 | 1101 | 1046 | 978 | 906 | 830 | 745 | 666 | | | | | | | | | | | 16 |
| 18 | 1072 | 1059 | 1026 | 987 | 938 | 877 | 811 | 733 | 660 | 591 | 530 | 473 | | | | | | | | 18 |
| 20 | 969 | 968 | 950 | 922 | 887 | 843 | 788 | 722 | 651 | 582 | 528 | 473 | 417 | 385 | | | | | | 20 |
| 22 | 888 | 877 | 873 | 857 | 835 | 802 | 759 | 710 | 642 | 576 | 521 | 468 | 417 | 382 | 339 | 302 | 275 | | | 22 |
| 24 | 812 | 807 | 796 | 792 | 780 | 760 | 728 | 687 | 632 | 570 | 517 | 463 | 415 | 377 | 337 | 302 | 274 | 243 | | 24 |
| 26 | 746 | 744 | 735 | 726 | 724 | 712 | 694 | 665 | 619 | 551 | 507 | 459 | 413 | 373 | 333 | 299 | 271 | 243 | | 26 |
| 28 | 689 | 683 | 681 | 673 | 668 | 663 | 651 | 636 | 607 | 552 | 500 | 451 | 410 | 372 | 331 | 298 | 269 | 243 | | 28 |
| 30 | 633 | 637 | 628 | 626 | 621 | 615 | 609 | 599 | 582 | 544 | 494 | 446 | 397 | 363 | 329 | 296 | 267 | 242 | | 30 |
| 32 | 586 | 591 | 587 | 579 | 579 | 573 | 567 | 563 | 550 | 522 | 487 | 442 | 396 | 359 | 320 | 293 | 266 | 241 | | 32 |
| 34 | 541 | 548 | 548 | 540 | 538 | 537 | 530 | 526 | 518 | 498 | 469 | 434 | 392 | 356 | 320 | 289 | 262 | 238 | | 34 |
| 36 | 497 | 514 | 510 | 508 | 500 | 501 | 499 | 494 | 487 | 474 | 451 | 422 | 384 | 354 | 318 | 287 | 261 | 234 | | 36 |
| 38 | 465 | 481 | 479 | 476 | 472 | 465 | 468 | 466 | 458 | 450 | 434 | 409 | 374 | 343 | 315 | 285 | 259 | 232 | | 38 |
| 40 | 434 | 447 | 453 | 444 | 445 | 440 | 436 | 439 | 434 | 427 | 416 | 396 | 364 | 333 | 305 | 282 | 258 | 230 | | 40 |
| 44 | 374 | 393 | 401 | 400 | 393 | 393 | 390 | 385 | 385 | 384 | 379 | 369 | 344 | 322 | 293 | 270 | 246 | 224 | | 44 |
| 48 | | 347 | 357 | 357 | 356 | 351 | 350 | 350 | 344 | 341 | 340 | 337 | 321 | 307 | 281 | 261 | 237 | 215 | | 48 |
| 52 | | | 319 | 326 | 320 | 320 | 315 | 314 | 312 | 309 | 302 | 304 | 296 | 285 | 267 | 251 | 230 | 209 | | 52 |
| 56 | | | | 292 | 294 | 288 | 288 | 286 | 281 | 281 | 278 | 275 | 271 | 264 | 251 | 238 | 221 | 204 | | 56 |
| 60 | | | | 262 | 269 | 266 | 261 | 262 | 258 | 253 | 253 | 253 | 249 | 243 | 234 | 225 | 210 | 194 | | 60 |
| 64 | | | | | 241 | 244 | 242 | 238 | 237 | 234 | 229 | 230 | 229 | 225 | 218 | 211 | 200 | 184 | | 64 |
| 68 | | | | | | 222 | 222 | 221 | 216 | 216 | 212 | 210 | 208 | 207 | 202 | 197 | 189 | 174 | | 68 |
| 72 | | | | | | | 206 | 204 | 201 | 198 | 196 | 195 | 191 | 188 | 186 | 184 | 177 | 164 | | 72 |
| 76 | | | | | | | | 190 | 187 | 184 | 179 | 180 | 177 | 173 | 170 | 170 | 164 | 155 | | 76 |
| 80 | | | | | | | | 173 | 173 | 171 | 167 | 165 | 164 | 161 | 158 | 156 | 152 | 145 | | 80 |
| 84 | | | | | | | | | 160 | 159 | 156 | 154 | 150 | 149 | 146 | 145 | 139 | 136 | | 84 |
| 88 | | | | | | | | | | 148 | 144 | 144 | 140 | 137 | 135 | 135 | 130 | 127 | | 88 |
| 92 | | | | | | | | | | | 135 | 133 | 129 | 128 | 124 | 125 | 120 | 118 | | 92 |
| 96 | | | | | | | | | | | 127 | 120 | 119 | 119 | 116 | 114 | 111 | 109 | | 96 |
| 100 | | | | | | | | | | | | 111 | 111 | 110 | 108 | 106 | 101 | 100 | | 100 |
| 104 | | | | | | | | | | | | | 104 | 103 | 100 | 99 | 94 | 91 | | 104 |
| 108 | | | | | | | | | | | | | | 96 | 93 | 92 | 87 | 84 | | 108 |
| 112 | | | | | | | | | | | | | | | 90 | 86 | 85 | 80 | 78 | 112 |
| 116 | | | | | | | | | | | | | | | | 80 | 79 | 74 | 72 | 116 |
| 120 | | | | | | | | | | | | | | | | | 73 | 68 | 65 | 120 |
| 124 | | | | | | | | | | | | | | | | | | 63 | 60 | 124 |
| 128 | | | | | | | | | | | | | | | | | | | 55 | 128 |
| 132 | | | | | | | | | | | | | | | | | | | 50 | 132 |

Traglasten am SDB-Auslegersystem
Lifting capacities on SDB boom/derrick combination
Forces de levage en configuration SDB · Portate con sistema braccio SDB
Tablas de carga con sistema de pluma SDB · Грузоподъемность на стреловой системе SDB

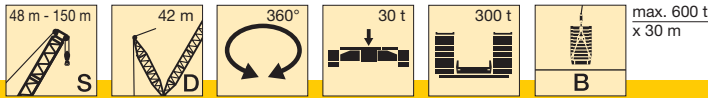


Vorläufig
Préliminaire · Provisorio
Provisional · Временно
Preliminary

| | 48 m | 54 m | 60 m | 66 m | 72 m | 78 m | 84 m | 90 m | 96 m | 102 m | 108 m | 114 m | 120 m | 126 m | 132 m | 138 m | 144 m | 150 m | | |
|-----|------|------|------|------|------|------|------|------|------|-------|-------|-------|-------|-------|-------|-------|-------|-------|--|-----|
| 10 | 1250 | | | | | | | | | | | | | | | | | | | 10 |
| 11 | 1250 | 1250 | | | | | | | | | | | | | | | | | | 11 |
| 12 | 1250 | 1239 | 1187 | 1112 | | | | | | | | | | | | | | | | 12 |
| 14 | 1195 | 1154 | 1118 | 1058 | 982 | 907 | | | | | | | | | | | | | | 14 |
| 16 | 1107 | 1078 | 1049 | 1002 | 939 | 876 | 810 | 739 | 666 | | | | | | | | | | | 16 |
| 18 | 1022 | 1003 | 987 | 947 | 895 | 842 | 785 | 729 | 660 | 590 | 530 | 473 | | | | | | | | 18 |
| 20 | 937 | 924 | 920 | 893 | 852 | 807 | 759 | 710 | 648 | 580 | 526 | 473 | 417 | 383 | | | | | | 20 |
| 22 | 860 | 845 | 845 | 832 | 809 | 772 | 731 | 690 | 641 | 576 | 516 | 467 | 417 | 380 | 339 | 302 | 274 | | | 22 |
| 24 | 785 | 780 | 769 | 767 | 756 | 736 | 703 | 668 | 627 | 570 | 515 | 463 | 414 | 374 | 334 | 301 | 272 | 243 | | 24 |
| 26 | 723 | 718 | 711 | 702 | 700 | 689 | 671 | 646 | 610 | 559 | 505 | 459 | 411 | 372 | 331 | 299 | 271 | 243 | | 26 |
| 28 | 671 | 661 | 660 | 652 | 645 | 642 | 631 | 617 | 592 | 552 | 500 | 450 | 406 | 369 | 329 | 298 | 268 | 242 | | 28 |
| 30 | 619 | 619 | 609 | 608 | 601 | 595 | 590 | 582 | 565 | 544 | 494 | 446 | 400 | 361 | 327 | 295 | 267 | 240 | | 30 |
| 32 | 578 | 576 | 571 | 565 | 564 | 556 | 550 | 547 | 535 | 519 | 487 | 442 | 396 | 358 | 322 | 292 | 264 | 239 | | 32 |
| 34 | 537 | 537 | 537 | 528 | 527 | 524 | 516 | 512 | 504 | 493 | 467 | 434 | 392 | 354 | 319 | 290 | 261 | 236 | | 34 |
| 36 | 497 | 507 | 502 | 499 | 491 | 491 | 488 | 481 | 474 | 467 | 448 | 421 | 384 | 352 | 316 | 287 | 259 | 234 | | 36 |
| 38 | 465 | 477 | 473 | 470 | 466 | 459 | 460 | 457 | 447 | 441 | 428 | 407 | 374 | 345 | 313 | 285 | 258 | 232 | | 38 |
| 40 | 434 | 447 | 448 | 440 | 441 | 435 | 431 | 432 | 425 | 418 | 409 | 394 | 364 | 337 | 304 | 282 | 256 | 230 | | 40 |
| 44 | 374 | 393 | 400 | 398 | 392 | 391 | 388 | 383 | 382 | 379 | 372 | 367 | 344 | 322 | 293 | 270 | 246 | 223 | | 44 |
| 48 | | 347 | 356 | 356 | 356 | 351 | 349 | 349 | 343 | 340 | 337 | 335 | 321 | 307 | 281 | 261 | 237 | 215 | | 48 |
| 52 | | | 319 | 326 | 320 | 320 | 315 | 314 | 312 | 309 | 302 | 303 | 296 | 285 | 267 | 251 | 230 | 209 | | 52 |
| 56 | | | | 292 | 294 | 288 | 288 | 286 | 281 | 281 | 278 | 275 | 271 | 264 | 251 | 238 | 221 | 204 | | 56 |
| 60 | | | | 262 | 269 | 266 | 261 | 262 | 258 | 253 | 253 | 249 | 243 | 234 | 225 | 210 | 194 | | | 60 |
| 64 | | | | | 241 | 244 | 242 | 238 | 237 | 234 | 229 | 231 | 229 | 225 | 218 | 211 | 200 | 184 | | 64 |
| 68 | | | | | | 222 | 222 | 221 | 216 | 216 | 212 | 210 | 208 | 207 | 202 | 197 | 189 | 174 | | 68 |
| 72 | | | | | | | 206 | 204 | 201 | 198 | 196 | 195 | 191 | 188 | 186 | 184 | 177 | 164 | | 72 |
| 76 | | | | | | | | 190 | 187 | 184 | 179 | 180 | 177 | 173 | 170 | 170 | 164 | 155 | | 76 |
| 80 | | | | | | | | 173 | 173 | 171 | 167 | 165 | 164 | 161 | 158 | 156 | 152 | 145 | | 80 |
| 84 | | | | | | | | | 160 | 159 | 156 | 154 | 150 | 149 | 146 | 145 | 139 | 136 | | 84 |
| 88 | | | | | | | | | | 148 | 144 | 144 | 140 | 137 | 135 | 135 | 130 | 127 | | 88 |
| 92 | | | | | | | | | | | 135 | 133 | 129 | 128 | 124 | 125 | 120 | 118 | | 92 |
| 96 | | | | | | | | | | | 127 | 120 | 119 | 119 | 116 | 114 | 111 | 109 | | 96 |
| 100 | | | | | | | | | | | | 111 | 111 | 110 | 108 | 106 | 101 | 100 | | 100 |
| 104 | | | | | | | | | | | | | 104 | 103 | 100 | 99 | 94 | 91 | | 104 |
| 108 | | | | | | | | | | | | | | 96 | 93 | 92 | 87 | 84 | | 108 |
| 112 | | | | | | | | | | | | | | 90 | 86 | 85 | 80 | 78 | | 112 |
| 116 | | | | | | | | | | | | | | | 80 | 79 | 74 | 72 | | 116 |
| 120 | | | | | | | | | | | | | | | | 73 | 68 | 65 | | 120 |
| 124 | | | | | | | | | | | | | | | | | 63 | 60 | | 124 |
| 128 | | | | | | | | | | | | | | | | | | 55 | | 128 |
| 132 | | | | | | | | | | | | | | | | | | 50 | | 132 |

TAB 190067

Traglasten am SDB2-Auslegersystem
Lifting capacities on SDB2 boom/derrick combination
Forces de levage en configuration SDB2 · Portate con sistema braccio SDB2
Tablas de carga con sistema de pluma SDB2 · Грузоподъемность на стреловой системе SDB2

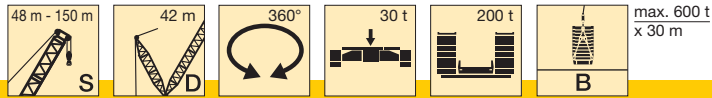


Vorläufig
Préliminaire · Provisorio
Provisional · Временно
Preliminary

| | 48 m | 54 m | 60 m | 66 m | 72 m | 78 m | 84 m | 90 m | 96 m | 102 m | 108 m | 114 m | 120 m | 126 m | 132 m | 138 m | 144 m | 150 m | | | |
|-----|------|------|------|------|------|------|------|------|------|-------|-------|-------|-------|-------|-------|-------|-------|-------|-----|-----|-----|
| 10 | 1250 | | | | | | | | | | | | | | | | | | | 10 | |
| 11 | 1250 | 1250 | | | | | | | | | | | | | | | | | | 11 | |
| 12 | 1250 | 1250 | 1250 | 1190 | | | | | | | | | | | | | | | | 12 | |
| 14 | 1237 | 1250 | 1250 | 1151 | 1059 | 967 | | | | | | | | | | | | | | 14 | |
| 16 | 1216 | 1217 | 1172 | 1106 | 1027 | 947 | 859 | 762 | 680 | | | | | | | | | | | 16 | |
| 18 | 1169 | 1145 | 1114 | 1061 | 993 | 923 | 846 | 753 | 676 | 602 | 538 | 473 | | | | | | | | 18 | |
| 20 | 1078 | 1060 | 1048 | 1014 | 956 | 898 | 831 | 748 | 669 | 597 | 536 | 473 | 417 | 383 | | | | | | 20 | |
| 22 | 993 | 976 | 969 | 953 | 919 | 869 | 811 | 741 | 665 | 593 | 533 | 473 | 417 | 382 | 341 | 302 | 275 | | | 22 | |
| 24 | 910 | 903 | 890 | 884 | 865 | 839 | 789 | 730 | 653 | 589 | 529 | 473 | 417 | 380 | 339 | 302 | 274 | 243 | | 24 | |
| 26 | 840 | 834 | 827 | 814 | 807 | 790 | 762 | 720 | 654 | 583 | 526 | 472 | 417 | 379 | 338 | 302 | 273 | 243 | | 26 | |
| 28 | 781 | 769 | 768 | 758 | 749 | 740 | 721 | 697 | 647 | 577 | 522 | 465 | 417 | 377 | 336 | 302 | 271 | 243 | | 28 | |
| 30 | 722 | 719 | 710 | 707 | 699 | 691 | 680 | 663 | 627 | 572 | 519 | 464 | 415 | 375 | 335 | 301 | 270 | 243 | | 30 | |
| 32 | 676 | 669 | 665 | 657 | 655 | 647 | 639 | 628 | 601 | 556 | 513 | 460 | 412 | 373 | 330 | 299 | 269 | 242 | | 32 | |
| 34 | 632 | 623 | 622 | 614 | 611 | 608 | 601 | 594 | 575 | 540 | 502 | 453 | 409 | 371 | 330 | 298 | 267 | 241 | | 34 | |
| 36 | 587 | 587 | 580 | 578 | 570 | 570 | 567 | 561 | 549 | 524 | 492 | 450 | 401 | 368 | 328 | 296 | 266 | 238 | | 36 | |
| 38 | 541 | 551 | 545 | 542 | 539 | 531 | 533 | 531 | 522 | 508 | 481 | 444 | 400 | 363 | 326 | 295 | 264 | 236 | | 38 | |
| 40 | 495 | 517 | 516 | 506 | 509 | 503 | 499 | 501 | 496 | 489 | 470 | 438 | 396 | 360 | 323 | 293 | 263 | 234 | | 40 | |
| 44 | 409 | 459 | 458 | 457 | 450 | 450 | 447 | 442 | 442 | 441 | 435 | 423 | 388 | 353 | 318 | 288 | 256 | 229 | | 44 | |
| 48 | | 394 | 416 | 409 | 409 | 403 | 402 | 402 | 396 | 393 | 392 | 388 | 368 | 345 | 314 | 284 | 252 | 224 | | 48 | |
| 52 | | | 373 | 374 | 368 | 368 | 363 | 362 | 361 | 357 | 350 | 352 | 341 | 325 | 303 | 279 | 246 | 219 | | 52 | |
| 56 | | | | 341 | 338 | 333 | 333 | 330 | 326 | 326 | 323 | 320 | 315 | 305 | 289 | 269 | 240 | 214 | | 56 | |
| 60 | | | | 306 | 310 | 307 | 302 | 303 | 300 | 295 | 295 | 295 | 291 | 285 | 276 | 259 | 233 | 207 | | 60 | |
| 64 | | | | | 286 | 282 | 280 | 276 | 276 | 273 | 268 | 270 | 268 | 264 | 260 | 248 | 226 | 202 | | 64 | |
| 68 | | | | | | 262 | 259 | 257 | 253 | 253 | 249 | 247 | 245 | 243 | 241 | 234 | 220 | 196 | | 68 | |
| 72 | | | | | | | 240 | 239 | 236 | 232 | 231 | 230 | 225 | 223 | 222 | 218 | 207 | 190 | | 72 | |
| 76 | | | | | | | | 222 | 219 | 217 | 212 | 213 | 210 | 206 | 203 | 203 | 194 | 181 | | 76 | |
| 80 | | | | | | | | 208 | 204 | 202 | 198 | 196 | 195 | 192 | 189 | 187 | 181 | 172 | | 80 | |
| 84 | | | | | | | | | 191 | 188 | 185 | 184 | 180 | 178 | 176 | 175 | 169 | 164 | | 84 | |
| 88 | | | | | | | | | | 176 | 172 | 172 | 168 | 165 | 164 | 163 | 158 | 155 | | 88 | |
| 92 | | | | | | | | | | | 162 | 160 | 158 | 154 | 151 | 152 | 147 | 145 | | 92 | |
| 96 | | | | | | | | | | | 152 | 150 | 147 | 145 | 142 | 140 | 137 | 135 | | 96 | |
| 100 | | | | | | | | | | | | 141 | 138 | 135 | 133 | 131 | 126 | 125 | | 100 | |
| 104 | | | | | | | | | | | | | 128 | 126 | 124 | 123 | 118 | 116 | | 104 | |
| 108 | | | | | | | | | | | | | | 117 | 115 | 115 | 111 | 108 | | 108 | |
| 112 | | | | | | | | | | | | | | | 111 | 108 | 107 | 103 | 101 | | 112 |
| 116 | | | | | | | | | | | | | | | | 102 | 100 | 95 | 94 | | 116 |
| 120 | | | | | | | | | | | | | | | | | 94 | 89 | 86 | | 120 |
| 124 | | | | | | | | | | | | | | | | | | 83 | 81 | | 124 |
| 128 | | | | | | | | | | | | | | | | | | | 75 | | 128 |
| 132 | | | | | | | | | | | | | | | | | | | 70 | | 132 |

TAB 190068

Traglasten am SDB2-Auslegersystem
Lifting capacities on SDB2 boom/derrick combination
Forces de levage en configuration SDB2 · Portate con sistema braccio SDB2
Tablas de carga con sistema de pluma SDB2 · Грузоподъемность на стреловой системе SDB2



Vorläufig
Préliminaire · Provisorio
Provisional · Временно
Preliminary

| | 48 m | 54 m | 60 m | 66 m | 72 m | 78 m | 84 m | 90 m | 96 m | 102 m | 108 m | 114 m | 120 m | 126 m | 132 m | 138 m | 144 m | 150 m | | |
|-----|------|------|------|------|------|------|------|------|------|-------|-------|-------|-------|-------|-------|-------|-------|-------|-----|-----|
| 10 | 1250 | | | | | | | | | | | | | | | | | | | 10 |
| 11 | 1250 | 1250 | | | | | | | | | | | | | | | | | | 11 |
| 12 | 1250 | 1250 | 1242 | 1157 | | | | | | | | | | | | | | | | 12 |
| 14 | 1250 | 1226 | 1179 | 1111 | 1025 | 942 | | | | | | | | | | | | | | 14 |
| 16 | 1189 | 1153 | 1117 | 1062 | 988 | 918 | 842 | 762 | 680 | | | | | | | | | | | 16 |
| 18 | 1117 | 1082 | 1059 | 1013 | 952 | 889 | 823 | 754 | 675 | 602 | 538 | 473 | | | | | | | | 18 |
| 20 | 1046 | 1014 | 996 | 965 | 912 | 859 | 802 | 743 | 670 | 597 | 536 | 473 | 417 | 383 | | | | | | 20 |
| 22 | 966 | 946 | 929 | 909 | 873 | 827 | 778 | 730 | 665 | 593 | 533 | 473 | 417 | 382 | 340 | 302 | 275 | | | 22 |
| 24 | 883 | 878 | 862 | 848 | 824 | 795 | 753 | 711 | 656 | 589 | 529 | 473 | 417 | 380 | 339 | 302 | 273 | 243 | | 24 |
| 26 | 815 | 810 | 802 | 788 | 774 | 752 | 725 | 692 | 645 | 583 | 526 | 471 | 417 | 379 | 337 | 302 | 272 | 243 | | 26 |
| 28 | 757 | 746 | 745 | 735 | 724 | 710 | 689 | 667 | 633 | 578 | 522 | 467 | 417 | 377 | 335 | 302 | 271 | 243 | | 28 |
| 30 | 699 | 699 | 688 | 687 | 679 | 667 | 653 | 636 | 611 | 572 | 519 | 464 | 414 | 375 | 334 | 301 | 270 | 243 | | 30 |
| 32 | 658 | 652 | 647 | 639 | 638 | 629 | 618 | 606 | 585 | 553 | 513 | 460 | 411 | 373 | 332 | 299 | 269 | 242 | | 32 |
| 34 | 617 | 609 | 608 | 598 | 596 | 593 | 584 | 575 | 559 | 534 | 499 | 455 | 408 | 371 | 330 | 297 | 267 | 241 | | 34 |
| 36 | 576 | 576 | 569 | 566 | 558 | 557 | 553 | 545 | 533 | 514 | 486 | 448 | 400 | 368 | 328 | 296 | 266 | 238 | | 36 |
| 38 | 535 | 543 | 537 | 533 | 530 | 522 | 522 | 518 | 507 | 495 | 472 | 441 | 400 | 361 | 326 | 294 | 264 | 236 | | 38 |
| 40 | 494 | 511 | 509 | 500 | 501 | 495 | 491 | 491 | 483 | 475 | 458 | 434 | 396 | 360 | 322 | 291 | 263 | 234 | | 40 |
| 44 | 409 | 458 | 456 | 454 | 447 | 447 | 443 | 437 | 435 | 432 | 424 | 416 | 388 | 353 | 318 | 288 | 254 | 229 | | 44 |
| 48 | | 394 | 415 | 409 | 408 | 402 | 401 | 399 | 393 | 389 | 387 | 383 | 368 | 345 | 314 | 284 | 252 | 224 | | 48 |
| 52 | | | 373 | 374 | 368 | 367 | 363 | 361 | 359 | 356 | 349 | 349 | 341 | 325 | 303 | 279 | 246 | 219 | | 52 |
| 56 | | | | 341 | 338 | 333 | 333 | 330 | 326 | 325 | 322 | 319 | 314 | 305 | 290 | 269 | 240 | 214 | | 56 |
| 60 | | | | 306 | 310 | 307 | 302 | 303 | 300 | 295 | 295 | 294 | 290 | 285 | 276 | 259 | 233 | 207 | | 60 |
| 64 | | | | | 286 | 282 | 280 | 276 | 276 | 273 | 268 | 270 | 267 | 264 | 260 | 248 | 226 | 202 | | 64 |
| 68 | | | | | | 262 | 259 | 257 | 253 | 253 | 249 | 247 | 244 | 243 | 241 | 234 | 220 | 196 | | 68 |
| 72 | | | | | | | 240 | 239 | 236 | 232 | 231 | 230 | 225 | 223 | 222 | 218 | 207 | 190 | | 72 |
| 76 | | | | | | | | 222 | 219 | 217 | 212 | 213 | 210 | 206 | 203 | 203 | 194 | 181 | | 76 |
| 80 | | | | | | | | 208 | 204 | 202 | 198 | 196 | 195 | 192 | 189 | 187 | 181 | 172 | | 80 |
| 84 | | | | | | | | | 191 | 188 | 185 | 184 | 180 | 178 | 176 | 175 | 169 | 164 | | 84 |
| 88 | | | | | | | | | | 176 | 172 | 172 | 168 | 165 | 164 | 163 | 158 | 155 | | 88 |
| 92 | | | | | | | | | | | 162 | 160 | 158 | 154 | 151 | 152 | 147 | 145 | | 92 |
| 96 | | | | | | | | | | | 152 | 150 | 147 | 145 | 142 | 140 | 137 | 135 | | 96 |
| 100 | | | | | | | | | | | | 141 | 138 | 135 | 133 | 131 | 126 | 125 | | 100 |
| 104 | | | | | | | | | | | | | 128 | 126 | 124 | 123 | 118 | 116 | | 104 |
| 108 | | | | | | | | | | | | | | 117 | 115 | 115 | 111 | 108 | | 108 |
| 112 | | | | | | | | | | | | | | | 111 | 108 | 107 | 103 | 101 | 112 |
| 116 | | | | | | | | | | | | | | | | 102 | 100 | 95 | 94 | 116 |
| 120 | | | | | | | | | | | | | | | | | 94 | 89 | 86 | 120 |
| 124 | | | | | | | | | | | | | | | | | | 83 | 81 | 124 |
| 128 | | | | | | | | | | | | | | | | | | | 75 | 128 |
| 132 | | | | | | | | | | | | | | | | | | | 70 | 132 |

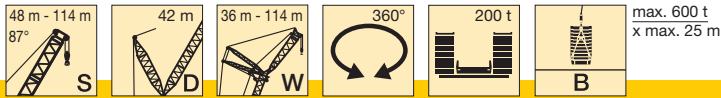
TAB 190069

Traglasten am SDWB-Auslegersystem

Lifting capacities on SDWB boom/jib combination

Forces de levage en configuration SDWB · Portate con sistema braccio SDWB

Tablas de carga con sistema de pluma SDWB · Грузоподъемность на стреловой системе SDWB



Vorläufig
Préliminaire · Provisorio
Provisional · Временно
Preliminary

| m | 48 m | | | | | | | | | | | | | m | |
|-----|------|------|------|------|------|------|------|------|------|------|------|-------|-------|------|-------|
| | 36 m | 42 m | 48 m | 54 m | 60 m | 66 m | 72 m | 78 m | 84 m | 90 m | 96 m | 102 m | 108 m | | 114 m |
| 16 | 622 | | | | | | | | | | | | | | 16 |
| 18 | 612 | 538 | | | | | | | | | | | | | 18 |
| 20 | 599 | 528 | 468 | 412 | | | | | | | | | | | 20 |
| 22 | 579 | 517 | 461 | 407 | 359 | | | | | | | | | | 22 |
| 24 | 558 | 504 | 452 | 402 | 354 | 311 | 273 | | | | | | | | 24 |
| 26 | 524 | 491 | 443 | 394 | 350 | 307 | 272 | 238 | | | | | | | 26 |
| 28 | 488 | 467 | 433 | 385 | 344 | 304 | 270 | 237 | 209 | 193 | | | | | 28 |
| 30 | 449 | 438 | 422 | 379 | 339 | 301 | 266 | 235 | 207 | 192 | 153 | | | | 30 |
| 32 | 413 | 409 | 398 | 373 | 333 | 296 | 263 | 233 | 205 | 190 | 150 | 141 | 124 | | 32 |
| 34 | 379 | 380 | 375 | 358 | 329 | 292 | 260 | 230 | 203 | 188 | 147 | 139 | 123 | 109 | 34 |
| 36 | 344 | 352 | 352 | 340 | 321 | 288 | 255 | 228 | 201 | 186 | 144 | 137 | 121 | 108 | 36 |
| 38 | 308 | 327 | 329 | 322 | 307 | 284 | 250 | 225 | 198 | 185 | 141 | 135 | 120 | 106 | 38 |
| 40 | | 301 | 307 | 303 | 294 | 275 | 245 | 223 | 196 | 183 | 139 | 133 | 119 | 104 | 40 |
| 44 | | | 268 | 267 | 264 | 258 | 232 | 219 | 191 | 179 | 133 | 129 | 116 | 101 | 44 |
| 48 | | | 227 | 237 | 235 | 235 | 218 | 213 | 184 | 176 | 128 | 125 | 114 | 98 | 48 |
| 52 | | | | 207 | 210 | 211 | 201 | 208 | 176 | 169 | 123 | 122 | 112 | 95 | 52 |
| 56 | | | | 171 | 185 | 190 | 183 | 190 | 168 | 161 | 119 | 119 | 109 | 92 | 56 |
| 60 | | | | | 153 | 170 | 168 | 172 | 161 | 153 | 114 | 115 | 107 | 89 | 60 |
| 64 | | | | | | 145 | 155 | 157 | 153 | 144 | 111 | 112 | 104 | 86 | 64 |
| 68 | | | | | | 107 | 134 | 142 | 141 | 135 | 107 | 109 | 102 | 83 | 68 |
| 72 | | | | | | | 112 | 126 | 129 | 127 | 104 | 107 | 99 | 80 | 72 |
| 76 | | | | | | | 72 | 109 | 115 | 119 | 101 | 105 | 97 | 77 | 76 |
| 80 | | | | | | | | 88 | 102 | 111 | 99 | 102 | 94 | 74 | 80 |
| 84 | | | | | | | | | 86 | 103 | 96 | 100 | 92 | 71 | 84 |
| 88 | | | | | | | | | 56 | 94 | 92 | 98 | 90 | 68 | 88 |
| 92 | | | | | | | | | | 76 | 87 | 90 | 87 | 65 | 92 |
| 96 | | | | | | | | | | | 75 | 81 | 82 | 63 | 96 |
| 100 | | | | | | | | | | | 51 | 70 | 74 | 60 | 100 |
| 104 | | | | | | | | | | | | 54 | 66 | 57 | 104 |
| 108 | | | | | | | | | | | | | 54 | 55 | 108 |
| 112 | | | | | | | | | | | | | 35 | 50 | 112 |
| 116 | | | | | | | | | | | | | | 40,5 | 116 |

VKTAB 190083

| m | 54 m | | | | | | | | | | | | | m | |
|-----|------|------|------|------|------|------|------|------|------|------|------|-------|-------|------|-------|
| | 36 m | 42 m | 48 m | 54 m | 60 m | 66 m | 72 m | 78 m | 84 m | 90 m | 96 m | 102 m | 108 m | | 114 m |
| 16 | 574 | | | | | | | | | | | | | | 16 |
| 18 | 562 | 496 | | | | | | | | | | | | | 18 |
| 20 | 548 | 487 | 433 | 381 | | | | | | | | | | | 20 |
| 22 | 532 | 478 | 428 | 380 | 338 | | | | | | | | | | 22 |
| 24 | 516 | 466 | 420 | 376 | 333 | 294 | | | | | | | | | 24 |
| 26 | 493 | 455 | 411 | 369 | 329 | 291 | 257 | 227 | | | | | | | 26 |
| 28 | 470 | 439 | 401 | 362 | 325 | 287 | 254 | 224 | 198 | 184 | | | | | 28 |
| 30 | 445 | 421 | 392 | 355 | 319 | 284 | 252 | 222 | 196 | 183 | 148 | | | | 30 |
| 32 | 419 | 402 | 378 | 349 | 314 | 281 | 248 | 220 | 195 | 181 | 146 | 136 | 120 | | 32 |
| 34 | 387 | 381 | 363 | 339 | 309 | 276 | 246 | 218 | 193 | 180 | 143 | 134 | 119 | 106 | 34 |
| 36 | 356 | 360 | 347 | 329 | 303 | 272 | 242 | 216 | 191 | 178 | 140 | 133 | 118 | 104 | 36 |
| 38 | 319 | 335 | 330 | 318 | 294 | 269 | 238 | 214 | 188 | 177 | 138 | 131 | 117 | 103 | 38 |
| 40 | | 310 | 312 | 304 | 287 | 261 | 233 | 212 | 186 | 175 | 135 | 129 | 115 | 101 | 40 |
| 44 | | 256 | 273 | 275 | 266 | 248 | 223 | 206 | 181 | 172 | 130 | 125 | 113 | 98 | 44 |
| 48 | | | 234 | 244 | 242 | 231 | 212 | 202 | 176 | 169 | 125 | 122 | 111 | 95 | 48 |
| 52 | | | | 213 | 217 | 213 | 197 | 197 | 169 | 163 | 120 | 118 | 108 | 92 | 52 |
| 56 | | | | 182 | 191 | 194 | 180 | 186 | 162 | 157 | 116 | 115 | 106 | 89 | 56 |
| 60 | | | | | 163 | 175 | 167 | 174 | 155 | 150 | 112 | 112 | 103 | 86 | 60 |
| 64 | | | | | | 152 | 154 | 160 | 148 | 141 | 108 | 109 | 101 | 83 | 64 |
| 68 | | | | | | 119 | 138 | 145 | 139 | 133 | 105 | 106 | 98 | 80 | 68 |
| 72 | | | | | | | 122 | 129 | 129 | 126 | 102 | 104 | 95 | 77 | 72 |
| 76 | | | | | | | 83 | 114 | 118 | 118 | 100 | 102 | 93 | 74 | 76 |
| 80 | | | | | | | | 94 | 105 | 111 | 97 | 100 | 91 | 72 | 80 |
| 84 | | | | | | | | | 91 | 104 | 95 | 98 | 88 | 68 | 84 |
| 88 | | | | | | | | | 64 | 96 | 91 | 96 | 86 | 66 | 88 |
| 92 | | | | | | | | | | 82 | 88 | 90 | 84 | 63 | 92 |
| 96 | | | | | | | | | | | 80 | 83 | 80 | 61 | 96 |
| 100 | | | | | | | | | | | 57 | 74 | 75 | 58 | 100 |
| 104 | | | | | | | | | | | | 61 | 71 | 56 | 104 |
| 108 | | | | | | | | | | | | | 61 | 53 | 108 |
| 112 | | | | | | | | | | | | | 41 | 51 | 112 |
| 116 | | | | | | | | | | | | | | 45,5 | 116 |

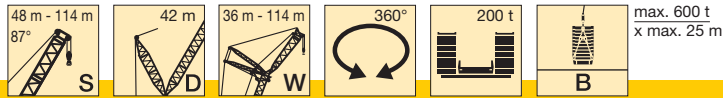
VKTAB 190083

Traglasten am SDWB-Auslegersystem

Lifting capacities on SDWB boom/jib combination

Forces de levage en configuration SDWB · Portate con sistema braccio SDWB

Tablas de carga con sistema de pluma SDWB · Грузоподъемность на стреловой системе SDWB



Vorläufig
 Préliminaire · Provisorio
 Provisional · Временно
 Preliminary

| m | 60 m | | | | | | | | | | | | | m | |
|-----|------|------|------|------|------|------|------|------|------|------|------|-------|-------|------|-------|
| | 36 m | 42 m | 48 m | 54 m | 60 m | 66 m | 72 m | 78 m | 84 m | 90 m | 96 m | 102 m | 108 m | | 114 m |
| 18 | 517 | 459 | | | | | | | | | | | | | 18 |
| 20 | 505 | 452 | 404 | | | | | | | | | | | | 20 |
| 22 | 489 | 442 | 398 | 355 | 316 | | | | | | | | | | 22 |
| 24 | 473 | 432 | 390 | 349 | 313 | 276 | | | | | | | | | 24 |
| 26 | 453 | 418 | 383 | 345 | 308 | 274 | 242 | 212 | | | | | | | 26 |
| 28 | 435 | 405 | 372 | 339 | 304 | 270 | 239 | 212 | 188 | 176 | | | | | 28 |
| 30 | 414 | 390 | 362 | 331 | 300 | 266 | 237 | 210 | 186 | 175 | 143 | | | | 30 |
| 32 | 392 | 375 | 350 | 323 | 293 | 263 | 234 | 208 | 184 | 174 | 141 | 131 | 115 | | 32 |
| 34 | 372 | 358 | 338 | 312 | 287 | 259 | 231 | 206 | 183 | 172 | 138 | 130 | 115 | 102 | 34 |
| 36 | 352 | 341 | 325 | 303 | 282 | 255 | 228 | 203 | 181 | 171 | 136 | 128 | 114 | 100 | 36 |
| 38 | 321 | 325 | 310 | 294 | 273 | 251 | 225 | 201 | 180 | 169 | 134 | 126 | 113 | 99 | 38 |
| 40 | | 311 | 297 | 283 | 265 | 246 | 220 | 199 | 177 | 168 | 131 | 125 | 112 | 98 | 40 |
| 44 | | 262 | 272 | 261 | 249 | 235 | 212 | 194 | 172 | 165 | 126 | 121 | 109 | 95 | 44 |
| 48 | | | 240 | 241 | 230 | 220 | 203 | 189 | 167 | 162 | 122 | 118 | 107 | 92 | 48 |
| 52 | | | | 217 | 212 | 205 | 191 | 183 | 161 | 158 | 117 | 115 | 104 | 89 | 52 |
| 56 | | | | 184 | 194 | 191 | 177 | 174 | 155 | 153 | 114 | 112 | 102 | 86 | 56 |
| 60 | | | | | 165 | 177 | 164 | 163 | 149 | 148 | 110 | 109 | 99 | 83 | 60 |
| 64 | | | | | | 155 | 152 | 153 | 142 | 140 | 106 | 106 | 97 | 80 | 64 |
| 68 | | | | | | 124 | 138 | 143 | 135 | 133 | 103 | 103 | 94 | 78 | 68 |
| 72 | | | | | | | 122 | 131 | 128 | 126 | 100 | 101 | 92 | 75 | 72 |
| 76 | | | | | | | 90 | 115 | 120 | 119 | 97 | 99 | 89 | 72 | 76 |
| 80 | | | | | | | | 98 | 106 | 112 | 95 | 97 | 87 | 69 | 80 |
| 84 | | | | | | | | | 93 | 105 | 92 | 95 | 85 | 66 | 84 |
| 88 | | | | | | | | | 71 | 99 | 90 | 93 | 82 | 64 | 88 |
| 92 | | | | | | | | | | 86 | 87 | 88 | 80 | 61 | 92 |
| 96 | | | | | | | | | | | 81 | 82 | 78 | 59 | 96 |
| 100 | | | | | | | | | | | 62 | 75 | 74 | 56 | 100 |
| 104 | | | | | | | | | | | | 64 | 71 | 54 | 104 |
| 108 | | | | | | | | | | | | | 63 | 52 | 108 |
| 112 | | | | | | | | | | | | | 45 | 49,5 | 112 |
| 116 | | | | | | | | | | | | | | 46 | 116 |

VKTAB 190083

| m | 66 m | | | | | | | | | | | | | m | |
|-----|------|------|------|------|------|------|------|------|------|------|------|-------|-------|------|-------|
| | 36 m | 42 m | 48 m | 54 m | 60 m | 66 m | 72 m | 78 m | 84 m | 90 m | 96 m | 102 m | 108 m | | 114 m |
| 18 | 475 | 425 | | | | | | | | | | | | | 18 |
| 20 | 464 | 416 | 374 | | | | | | | | | | | | 20 |
| 22 | 451 | 409 | 367 | 331 | | | | | | | | | | | 22 |
| 24 | 434 | 401 | 362 | 325 | 293 | 259 | | | | | | | | | 24 |
| 26 | 414 | 385 | 355 | 321 | 290 | 256 | 228 | | | | | | | | 26 |
| 28 | 397 | 371 | 342 | 315 | 284 | 254 | 226 | 200 | 179 | | | | | | 28 |
| 30 | 380 | 357 | 332 | 306 | 280 | 249 | 224 | 198 | 178 | 166 | 138 | | | | 30 |
| 32 | 363 | 344 | 321 | 297 | 274 | 246 | 222 | 196 | 175 | 165 | 136 | 126 | | | 32 |
| 34 | 346 | 329 | 310 | 289 | 266 | 242 | 218 | 194 | 174 | 164 | 134 | 125 | 111 | 98 | 34 |
| 36 | 329 | 315 | 299 | 280 | 259 | 238 | 216 | 193 | 172 | 162 | 131 | 123 | 109 | 97 | 36 |
| 38 | 311 | 301 | 286 | 272 | 252 | 232 | 212 | 190 | 171 | 161 | 129 | 122 | 108 | 95 | 38 |
| 40 | | 288 | 274 | 262 | 246 | 226 | 209 | 187 | 169 | 160 | 127 | 120 | 107 | 94 | 40 |
| 44 | | 251 | 253 | 243 | 231 | 215 | 200 | 183 | 164 | 157 | 122 | 117 | 105 | 91 | 44 |
| 48 | | | 228 | 224 | 216 | 203 | 191 | 175 | 159 | 153 | 118 | 114 | 103 | 89 | 48 |
| 52 | | | | 205 | 200 | 191 | 181 | 168 | 154 | 150 | 114 | 111 | 100 | 86 | 52 |
| 56 | | | | 185 | 185 | 178 | 170 | 160 | 148 | 146 | 110 | 108 | 98 | 83 | 56 |
| 60 | | | | | 163 | 166 | 160 | 151 | 142 | 141 | 107 | 105 | 95 | 80 | 60 |
| 64 | | | | | | 149 | 149 | 142 | 135 | 135 | 103 | 102 | 93 | 77 | 64 |
| 68 | | | | | | 126 | 136 | 133 | 128 | 129 | 100 | 100 | 90 | 75 | 68 |
| 72 | | | | | | | 121 | 123 | 121 | 123 | 97 | 98 | 88 | 72 | 72 |
| 76 | | | | | | | 90 | 111 | 113 | 117 | 95 | 95 | 86 | 69 | 76 |
| 80 | | | | | | | | 97 | 103 | 110 | 93 | 93 | 83 | 67 | 80 |
| 84 | | | | | | | | | 94 | 103 | 90 | 90 | 81 | 64 | 84 |
| 88 | | | | | | | | | 75 | 97 | 87 | 88 | 79 | 61 | 88 |
| 92 | | | | | | | | | | 85 | 85 | 84 | 77 | 59 | 92 |
| 96 | | | | | | | | | | | 80 | 78 | 74 | 56 | 96 |
| 100 | | | | | | | | | | | 64 | 73 | 70 | 54 | 100 |
| 104 | | | | | | | | | | | | 64 | 66 | 52 | 104 |
| 108 | | | | | | | | | | | | | 61 | 49,5 | 108 |
| 112 | | | | | | | | | | | | | 47 | 47,5 | 112 |
| 116 | | | | | | | | | | | | | | 45,5 | 116 |

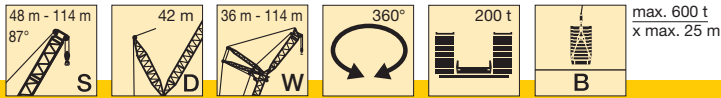
VKTAB 190083

Traglasten am SDWB-Auslegersystem

Lifting capacities on SDWB boom/jib combination

Forces de levage en configuration SDWB · Portate con sistema braccio SDWB

Tablas de carga con sistema de pluma SDWB · Грузоподъемность на стреловой системе SDWB



Vorläufig
Préliminaire · Provisorio
Провизорно · Временно
Preliminary

| m | 72 m | | | | | | | | | | | | | m | |
|-----|------|------|------|------|------|------|------|------|------|------|------|-------|-------|---|-------|
| | 36 m | 42 m | 48 m | 54 m | 60 m | 66 m | 72 m | 78 m | 84 m | 90 m | 96 m | 102 m | 108 m | | 114 m |
| 18 | 439 | | | | | | | | | | | | | | 18 |
| 20 | 427 | | | | | | | | | | | | | | 20 |
| 22 | 414 | | | | | | | | | | | | | | 22 |
| 24 | 397 | | | | | | | | | | | | | | 24 |
| 26 | 380 | | | | | | | | | | | | | | 26 |
| 28 | 365 | | | | | | | | | | | | | | 28 |
| 30 | 350 | | | | | | | | | | | | | | 30 |
| 32 | 337 | | | | | | | | | | | | | | 32 |
| 34 | 322 | | | | | | | | | | | | | | 34 |
| 36 | 308 | | | | | | | | | | | | | | 36 |
| 38 | 293 | | | | | | | | | | | | | | 38 |
| 40 | | | | | | | | | | | | | | | 40 |
| 44 | | | | | | | | | | | | | | | 44 |
| 48 | | | | | | | | | | | | | | | 48 |
| 52 | | | | | | | | | | | | | | | 52 |
| 56 | | | | | | | | | | | | | | | 56 |
| 60 | | | | | | | | | | | | | | | 60 |
| 64 | | | | | | | | | | | | | | | 64 |
| 68 | | | | | | | | | | | | | | | 68 |
| 72 | | | | | | | | | | | | | | | 72 |
| 76 | | | | | | | | | | | | | | | 76 |
| 80 | | | | | | | | | | | | | | | 80 |
| 84 | | | | | | | | | | | | | | | 84 |
| 88 | | | | | | | | | | | | | | | 88 |
| 92 | | | | | | | | | | | | | | | 92 |
| 96 | | | | | | | | | | | | | | | 96 |
| 100 | | | | | | | | | | | | | | | 100 |
| 104 | | | | | | | | | | | | | | | 104 |
| 108 | | | | | | | | | | | | | | | 108 |
| 112 | | | | | | | | | | | | | | | 112 |
| 116 | | | | | | | | | | | | | | | 116 |
| 120 | | | | | | | | | | | | | | | 120 |

VKTAB 190083

| m | 78 m | | | | | | | | | | | | | m | |
|-----|------|------|------|------|------|------|------|------|------|------|------|-------|-------|---|-------|
| | 36 m | 42 m | 48 m | 54 m | 60 m | 66 m | 72 m | 78 m | 84 m | 90 m | 96 m | 102 m | 108 m | | 114 m |
| 18 | 402 | | | | | | | | | | | | | | 18 |
| 20 | 391 | | | | | | | | | | | | | | 20 |
| 22 | 378 | | | | | | | | | | | | | | 22 |
| 24 | 364 | | | | | | | | | | | | | | 24 |
| 26 | 350 | | | | | | | | | | | | | | 26 |
| 28 | 337 | | | | | | | | | | | | | | 28 |
| 30 | 321 | | | | | | | | | | | | | | 30 |
| 32 | 309 | | | | | | | | | | | | | | 32 |
| 34 | 297 | | | | | | | | | | | | | | 34 |
| 36 | 285 | | | | | | | | | | | | | | 36 |
| 38 | 274 | | | | | | | | | | | | | | 38 |
| 40 | | | | | | | | | | | | | | | 40 |
| 44 | | | | | | | | | | | | | | | 44 |
| 48 | | | | | | | | | | | | | | | 48 |
| 52 | | | | | | | | | | | | | | | 52 |
| 56 | | | | | | | | | | | | | | | 56 |
| 60 | | | | | | | | | | | | | | | 60 |
| 64 | | | | | | | | | | | | | | | 64 |
| 68 | | | | | | | | | | | | | | | 68 |
| 72 | | | | | | | | | | | | | | | 72 |
| 76 | | | | | | | | | | | | | | | 76 |
| 80 | | | | | | | | | | | | | | | 80 |
| 84 | | | | | | | | | | | | | | | 84 |
| 88 | | | | | | | | | | | | | | | 88 |
| 92 | | | | | | | | | | | | | | | 92 |
| 96 | | | | | | | | | | | | | | | 96 |
| 100 | | | | | | | | | | | | | | | 100 |
| 104 | | | | | | | | | | | | | | | 104 |
| 108 | | | | | | | | | | | | | | | 108 |
| 112 | | | | | | | | | | | | | | | 112 |
| 116 | | | | | | | | | | | | | | | 116 |
| 120 | | | | | | | | | | | | | | | 120 |

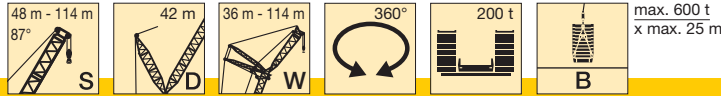
VKTAB 190083

Traglasten am SDWB-Auslegersystem

Lifting capacities on SDWB boom/jib combination

Forces de levage en configuration SDWB · Portate con sistema braccio SDWB

Tablas de carga con sistema de pluma SDWB · Грузоподъемность на стреловой системе SDWB



Vorläufig
 Préliminaire · Provisorio
 Provisional · Временно
 Preliminary

| m | 84 m | | | | | | | | | | | | | | m |
|-----|------|------|------|------|------|------|------|------|------|------|------|-------|-------|-------|-----|
| | 36 m | 42 m | 48 m | 54 m | 60 m | 66 m | 72 m | 78 m | 84 m | 90 m | 96 m | 102 m | 108 m | 114 m | |
| 18 | 365 | | | | | | | | | | | | | | 18 |
| 20 | 356 | 324 | | | | | | | | | | | | | 20 |
| 22 | 344 | 316 | 288 | | | | | | | | | | | | 22 |
| 24 | 330 | 307 | 281 | 255 | 231 | | | | | | | | | | 24 |
| 26 | 317 | 295 | 273 | 249 | 227 | 205 | 183 | | | | | | | | 26 |
| 28 | 306 | 285 | 263 | 243 | 222 | 201 | 182 | 163 | | | | | | | 28 |
| 30 | 294 | 275 | 255 | 237 | 217 | 197 | 178 | 162 | 145 | 138 | | | | | 30 |
| 32 | 283 | 265 | 247 | 228 | 212 | 193 | 176 | 159 | 143 | 137 | 119 | 109 | | | 32 |
| 34 | 272 | 256 | 239 | 222 | 205 | 189 | 173 | 157 | 142 | 136 | 118 | 109 | 96 | | 34 |
| 36 | 261 | 247 | 231 | 215 | 200 | 185 | 169 | 155 | 139 | 135 | 116 | 108 | 94 | 83 | 36 |
| 38 | 251 | 238 | 224 | 209 | 195 | 179 | 166 | 152 | 137 | 133 | 115 | 107 | 94 | 82 | 38 |
| 40 | | 229 | 217 | 203 | 189 | 175 | 162 | 149 | 135 | 131 | 113 | 106 | 93 | 81 | 40 |
| 44 | | 213 | 201 | 191 | 179 | 166 | 154 | 143 | 131 | 128 | 110 | 103 | 91 | 79 | 44 |
| 48 | | | 188 | 178 | 169 | 157 | 146 | 136 | 126 | 124 | 106 | 100 | 88 | 77 | 48 |
| 52 | | | 175 | 166 | 159 | 149 | 139 | 130 | 120 | 120 | 103 | 98 | 86 | 74 | 52 |
| 56 | | | | 155 | 148 | 141 | 132 | 124 | 115 | 114 | 100 | 96 | 84 | 72 | 56 |
| 60 | | | | | 138 | 131 | 125 | 118 | 110 | 110 | 97 | 93 | 82 | 69 | 60 |
| 64 | | | | | 129 | 123 | 118 | 112 | 105 | 106 | 94 | 91 | 79 | 67 | 64 |
| 68 | | | | | | 115 | 110 | 106 | 100 | 102 | 91 | 88 | 77 | 65 | 68 |
| 72 | | | | | | | 102 | 100 | 94 | 98 | 89 | 85 | 75 | 62 | 72 |
| 76 | | | | | | | 96 | 93 | 89 | 93 | 86 | 82 | 73 | 60 | 76 |
| 80 | | | | | | | | 87 | 83 | 88 | 83 | 79 | 70 | 58 | 80 |
| 84 | | | | | | | | 72 | 78 | 83 | 80 | 76 | 68 | 55 | 84 |
| 88 | | | | | | | | | 73 | 79 | 76 | 72 | 66 | 53 | 88 |
| 92 | | | | | | | | | | 74 | 72 | 69 | 63 | 50 | 92 |
| 96 | | | | | | | | | | 65 | 67 | 64 | 61 | 48 | 96 |
| 100 | | | | | | | | | | | 62 | 60 | 57 | 46 | 100 |
| 104 | | | | | | | | | | | | 56 | 53 | 44,5 | 104 |
| 108 | | | | | | | | | | | | 48 | 49 | 42,5 | 108 |
| 112 | | | | | | | | | | | | | 45 | 41 | 112 |
| 116 | | | | | | | | | | | | | | 39,5 | 116 |
| 120 | | | | | | | | | | | | | | 34 | 120 |

VKTAB 190083

| m | 90 m | | | | | | | | | | | | | m |
|-----|------|------|------|------|------|------|------|------|------|------|-------|-------|-------|-----|
| | 42 m | 48 m | 54 m | 60 m | 66 m | 72 m | 78 m | 84 m | 90 m | 96 m | 102 m | 108 m | 114 m | |
| 20 | 294 | | | | | | | | | | | | | 20 |
| 22 | 286 | 260 | 233 | | | | | | | | | | | 22 |
| 24 | 278 | 254 | 232 | 210 | | | | | | | | | | 24 |
| 26 | 269 | 247 | 227 | 206 | 186 | | | | | | | | | 26 |
| 28 | 260 | 240 | 222 | 202 | 183 | 167 | 149 | | | | | | | 28 |
| 30 | 250 | 233 | 216 | 197 | 179 | 164 | 147 | 132 | 127 | | | | | 30 |
| 32 | 241 | 224 | 210 | 193 | 176 | 161 | 145 | 130 | 126 | 113 | | | | 32 |
| 34 | 233 | 217 | 204 | 188 | 172 | 158 | 143 | 129 | 124 | 111 | 101 | 88 | | 34 |
| 36 | 225 | 210 | 197 | 183 | 168 | 156 | 141 | 127 | 123 | 110 | 101 | 88 | 78 | 36 |
| 38 | 218 | 204 | 191 | 177 | 164 | 152 | 138 | 125 | 122 | 108 | 100 | 87 | 77 | 38 |
| 40 | 211 | 198 | 186 | 172 | 160 | 149 | 136 | 123 | 121 | 107 | 99 | 86 | 76 | 40 |
| 44 | 198 | 186 | 175 | 162 | 151 | 142 | 130 | 119 | 117 | 104 | 97 | 85 | 74 | 44 |
| 48 | | 174 | 165 | 154 | 143 | 134 | 125 | 114 | 113 | 101 | 95 | 83 | 72 | 48 |
| 52 | | 163 | 156 | 145 | 135 | 128 | 118 | 110 | 109 | 98 | 92 | 81 | 70 | 52 |
| 56 | | | 146 | 137 | 128 | 121 | 112 | 104 | 105 | 95 | 90 | 78 | 68 | 56 |
| 60 | | | | 129 | 121 | 115 | 107 | 99 | 100 | 92 | 87 | 76 | 65 | 60 |
| 64 | | | | 119 | 114 | 109 | 102 | 95 | 96 | 89 | 84 | 74 | 63 | 64 |
| 68 | | | | | 107 | 103 | 97 | 90 | 93 | 86 | 81 | 72 | 61 | 68 |
| 72 | | | | | 94 | 97 | 91 | 85 | 89 | 83 | 77 | 70 | 58 | 72 |
| 76 | | | | | | 91 | 86 | 81 | 85 | 80 | 75 | 67 | 56 | 76 |
| 80 | | | | | | | 80 | 76 | 81 | 77 | 72 | 65 | 54 | 80 |
| 84 | | | | | | | 71 | 71 | 77 | 74 | 69 | 62 | 52 | 84 |
| 88 | | | | | | | | 66 | 72 | 70 | 66 | 60 | 49,5 | 88 |
| 92 | | | | | | | | | 68 | 66 | 62 | 57 | 47,5 | 92 |
| 96 | | | | | | | | | 63 | 61 | 58 | 55 | 45 | 96 |
| 100 | | | | | | | | | | 58 | 55 | 51 | 43 | 100 |
| 104 | | | | | | | | | | | 51 | 48 | 41,5 | 104 |
| 108 | | | | | | | | | | | 47 | 44,5 | 39,5 | 108 |
| 112 | | | | | | | | | | | | 41,5 | 38 | 112 |
| 116 | | | | | | | | | | | | | 35,5 | 116 |
| 120 | | | | | | | | | | | | | 33 | 120 |

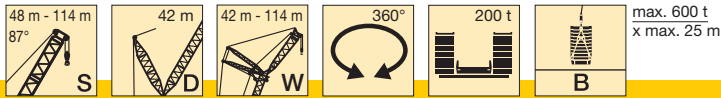
VKTAB 190083

Traglasten am SDWB-Auslegersystem

Lifting capacities on SDWB boom/jib combination

Forces de levage en configuration SDWB · Portate con sistema braccio SDWB

Tablas de carga con sistema de pluma SDWB · Грузоподъемность на стреловой системе SDWB



Vorläufig
Préliminaire · Provisorio
Provisional · Временно
Preliminary

| m | 96 m | | | | | | | | | | | | | m |
|-----|------|------|------|------|------|------|------|------|------|------|-------|-------|-------|-----|
| | 42 m | 48 m | 54 m | 60 m | 66 m | 72 m | 78 m | 84 m | 90 m | 96 m | 102 m | 108 m | 114 m | |
| 20 | 268 | | | | | | | | | | | | | 20 |
| 22 | 260 | 238 | | | | | | | | | | | | 22 |
| 24 | 253 | 231 | 211 | 190 | | | | | | | | | | 24 |
| 26 | 245 | 226 | 206 | 187 | 170 | | | | | | | | | 26 |
| 28 | 238 | 220 | 201 | 182 | 167 | 151 | 134 | | | | | | | 28 |
| 30 | 230 | 213 | 196 | 179 | 165 | 149 | 133 | 121 | 118 | | | | | 30 |
| 32 | 221 | 207 | 191 | 175 | 161 | 147 | 132 | 120 | 117 | 104 | | | | 32 |
| 34 | 214 | 201 | 186 | 171 | 158 | 143 | 130 | 119 | 115 | 103 | 93 | 80 | | 34 |
| 36 | 207 | 193 | 181 | 166 | 154 | 141 | 128 | 117 | 114 | 102 | 92 | 81 | 72 | 36 |
| 38 | 200 | 187 | 176 | 162 | 151 | 138 | 125 | 116 | 113 | 101 | 91 | 80 | 71 | 38 |
| 40 | 194 | 182 | 169 | 157 | 147 | 135 | 123 | 113 | 112 | 100 | 90 | 79 | 70 | 40 |
| 44 | 182 | 171 | 160 | 148 | 139 | 129 | 118 | 109 | 108 | 98 | 88 | 78 | 69 | 44 |
| 48 | | 161 | 151 | 140 | 131 | 123 | 113 | 105 | 105 | 95 | 86 | 76 | 67 | 48 |
| 52 | | 152 | 142 | 132 | 125 | 116 | 108 | 101 | 101 | 92 | 84 | 74 | 65 | 52 |
| 56 | | | 134 | 125 | 118 | 110 | 102 | 96 | 98 | 89 | 82 | 72 | 63 | 56 |
| 60 | | | 127 | 118 | 112 | 105 | 97 | 91 | 94 | 86 | 79 | 70 | 61 | 60 |
| 64 | | | | 111 | 106 | 100 | 92 | 87 | 90 | 83 | 76 | 68 | 59 | 64 |
| 68 | | | | | 100 | 94 | 88 | 83 | 86 | 80 | 73 | 66 | 57 | 68 |
| 72 | | | | | 94 | 89 | 83 | 79 | 83 | 76 | 70 | 63 | 54 | 72 |
| 76 | | | | | | 84 | 78 | 75 | 79 | 73 | 68 | 61 | 52 | 76 |
| 80 | | | | | | | 74 | 71 | 76 | 70 | 65 | 59 | 50 | 80 |
| 84 | | | | | | | 69 | 66 | 72 | 67 | 62 | 56 | 48 | 84 |
| 88 | | | | | | | | 63 | 68 | 64 | 60 | 54 | 46 | 88 |
| 92 | | | | | | | | | 64 | 61 | 57 | 52 | 44 | 92 |
| 96 | | | | | | | | | 62 | 57 | 54 | 49,5 | 42 | 96 |
| 100 | | | | | | | | | | 54 | 51 | 47 | 40 | 100 |
| 104 | | | | | | | | | | | 48 | 44,5 | 38,5 | 104 |
| 108 | | | | | | | | | | | 46 | 42 | 36,5 | 108 |
| 112 | | | | | | | | | | | | 39,5 | 35 | 112 |
| 116 | | | | | | | | | | | | | 33,5 | 116 |
| 120 | | | | | | | | | | | | | 32 | 120 |

VKTAB 190083

| m | 102 m | | | | | | | | | | | m | | |
|-----|-------|------|------|------|------|------|------|------|------|-------|-------|------|-------|-----|
| | 48 m | 54 m | 60 m | 66 m | 72 m | 78 m | 84 m | 90 m | 96 m | 102 m | 108 m | | 114 m | |
| 22 | 214 | | | | | | | | | | | | | 22 |
| 24 | 210 | 190 | 170 | | | | | | | | | | | 24 |
| 26 | 204 | 186 | 170 | 153 | | | | | | | | | | 26 |
| 28 | 199 | 182 | 167 | 151 | 136 | | | | | | | | | 28 |
| 30 | 193 | 177 | 164 | 148 | 134 | 120 | 110 | | | | | | | 30 |
| 32 | 188 | 173 | 159 | 146 | 132 | 118 | 108 | 106 | 95 | | | | | 32 |
| 34 | 182 | 168 | 155 | 142 | 130 | 117 | 107 | 105 | 94 | 85 | | | | 34 |
| 36 | 177 | 164 | 152 | 139 | 127 | 115 | 106 | 104 | 93 | 84 | 74 | 65 | | 36 |
| 38 | 171 | 159 | 148 | 136 | 124 | 113 | 104 | 103 | 92 | 83 | 73 | 65 | | 38 |
| 40 | 166 | 155 | 144 | 132 | 121 | 110 | 102 | 101 | 91 | 82 | 72 | 64 | | 40 |
| 44 | 155 | 146 | 136 | 126 | 116 | 105 | 98 | 98 | 89 | 80 | 70 | 62 | | 44 |
| 48 | 146 | 137 | 129 | 120 | 111 | 101 | 94 | 94 | 86 | 78 | 69 | 61 | | 48 |
| 52 | 139 | 129 | 121 | 114 | 105 | 96 | 90 | 91 | 83 | 75 | 67 | 60 | | 52 |
| 56 | | 122 | 114 | 107 | 100 | 92 | 86 | 88 | 80 | 73 | 65 | 58 | | 56 |
| 60 | | 117 | 108 | 101 | 94 | 87 | 82 | 84 | 77 | 70 | 62 | 56 | | 60 |
| 64 | | | 103 | 96 | 89 | 82 | 78 | 81 | 74 | 68 | 60 | 54 | | 64 |
| 68 | | | | 91 | 85 | 78 | 74 | 78 | 71 | 65 | 58 | 52 | | 68 |
| 72 | | | | 87 | 80 | 74 | 70 | 75 | 69 | 63 | 56 | 50 | | 72 |
| 76 | | | | | 76 | 70 | 67 | 71 | 66 | 60 | 54 | 48 | | 76 |
| 80 | | | | | | 67 | 63 | 68 | 63 | 58 | 52 | 46 | | 80 |
| 84 | | | | | | | 63 | 60 | 65 | 60 | 56 | 50 | 44,5 | 84 |
| 88 | | | | | | | | 57 | 62 | 57 | 53 | 48 | 42,5 | 88 |
| 92 | | | | | | | | | 59 | 55 | 50 | 45,5 | 40,5 | 92 |
| 96 | | | | | | | | | 57 | 52 | 48 | 43,5 | 39 | 96 |
| 100 | | | | | | | | | | 49,5 | 45,5 | 41,5 | 37 | 100 |
| 104 | | | | | | | | | | | 43,5 | 39,5 | 35 | 104 |
| 108 | | | | | | | | | | | 41,5 | 37,5 | 33,5 | 108 |
| 112 | | | | | | | | | | | | 35,5 | 32 | 112 |
| 116 | | | | | | | | | | | | | 30,5 | 116 |
| 120 | | | | | | | | | | | | | 28,7 | 120 |

VKTAB 190083

Traglasten am SDWB-Auslegersystem

Lifting capacities on SDWB boom/jib combination

Forces de levage en configuration SDWB · Portate con sistema braccio SDWB

Tablas de carga con sistema de pluma SDWB · Грузоподъемность на стреловой системе SDWB



max. 600 t
x max. 25 m

Vorläufig
Préliminaire · Provisorio
Provisional · Временно
Preliminary

| m | 108 m | | | | | | | | | | | m |
|-----|-------|------|------|------|------|------|------|------|-------|-------|-------|-----|
| | 54 m | 60 m | 66 m | 72 m | 78 m | 84 m | 90 m | 96 m | 102 m | 108 m | 114 m | |
| 24 | 172 | | | | | | | | | | | 24 |
| 26 | 169 | | | | | | | | | | | 26 |
| 28 | 165 | 152 | 137 | | | | | | | | | 28 |
| 30 | 162 | 150 | 135 | 122 | | | | | | | | 30 |
| 32 | 157 | 147 | 133 | 120 | 109 | 97 | | | | | | 32 |
| 34 | 153 | 144 | 131 | 118 | 108 | 97 | 96 | 85 | | | | 34 |
| 36 | 150 | 140 | 128 | 116 | 106 | 96 | 95 | 85 | 76 | | | 36 |
| 38 | 146 | 137 | 126 | 114 | 105 | 94 | 94 | 84 | 76 | 66 | 60 | 38 |
| 40 | 141 | 133 | 122 | 112 | 103 | 93 | 93 | 83 | 75 | 66 | 60 | 40 |
| 44 | 133 | 130 | 119 | 109 | 101 | 91 | 91 | 82 | 74 | 65 | 59 | 44 |
| 48 | 126 | 123 | 114 | 104 | 97 | 88 | 89 | 80 | 72 | 63 | 58 | 48 |
| 52 | 119 | 116 | 108 | 100 | 93 | 84 | 86 | 78 | 70 | 62 | 57 | 52 |
| 56 | 113 | 110 | 102 | 94 | 89 | 81 | 82 | 75 | 68 | 60 | 55 | 56 |
| 60 | 107 | 104 | 96 | 90 | 84 | 78 | 80 | 72 | 66 | 58 | 54 | 60 |
| 64 | | 98 | 91 | 85 | 80 | 74 | 77 | 70 | 63 | 56 | 52 | 64 |
| 68 | | 93 | 87 | 81 | 76 | 70 | 73 | 67 | 61 | 54 | 51 | 68 |
| 72 | | 79 | 82 | 76 | 72 | 66 | 70 | 64 | 59 | 52 | 48,5 | 72 |
| 76 | | | 78 | 72 | 68 | 63 | 67 | 62 | 56 | 50 | 46,5 | 76 |
| 80 | | | | 68 | 65 | 60 | 64 | 59 | 54 | 48 | 44,5 | 80 |
| 84 | | | | 67 | 61 | 57 | 61 | 57 | 52 | 46 | 43 | 84 |
| 88 | | | | | 58 | 53 | 59 | 54 | 49,5 | 44,5 | 41 | 88 |
| 92 | | | | | | 50 | 56 | 51 | 47 | 42,5 | 39 | 92 |
| 96 | | | | | | 49 | 53 | 49 | 45 | 40,5 | 37,5 | 96 |
| 100 | | | | | | | 51 | 46,5 | 43 | 38,5 | 35,5 | 100 |
| 104 | | | | | | | | 44 | 40,5 | 36,5 | 34 | 104 |
| 108 | | | | | | | | 43 | 38,5 | 34,5 | 32,5 | 108 |
| 112 | | | | | | | | | 36,5 | 33 | 31 | 112 |
| 116 | | | | | | | | | | 31 | 29,8 | 116 |
| 120 | | | | | | | | | | 29,9 | 28,2 | 120 |
| | | | | | | | | | | | 26,7 | 120 |

VKTAB 190083

| m | 114 m | | | | | | | | | | m | |
|-----|-------|------|------|------|------|------|------|------|-------|-------|---|-----|
| | 54 m | 60 m | 66 m | 72 m | 78 m | 84 m | 90 m | 96 m | 102 m | 108 m | | |
| 24 | 153 | | | | | | | | | | | 24 |
| 26 | 150 | | | | | | | | | | | 26 |
| 28 | 147 | 135 | 122 | | | | | | | | | 28 |
| 30 | 143 | 133 | 122 | 110 | | | | | | | | 30 |
| 32 | 140 | 130 | 119 | 108 | 97 | | | | | | | 32 |
| 34 | 136 | 127 | 117 | 106 | 95 | 86 | 86 | | | | | 34 |
| 36 | 133 | 124 | 114 | 104 | 94 | 85 | 85 | 76 | 68 | | | 36 |
| 38 | 130 | 121 | 112 | 102 | 92 | 83 | 84 | 75 | 67 | 61 | | 38 |
| 40 | 127 | 118 | 110 | 100 | 90 | 81 | 82 | 74 | 66 | 60 | | 40 |
| 44 | 120 | 115 | 107 | 98 | 89 | 80 | 81 | 73 | 65 | 59 | | 44 |
| 48 | 113 | 110 | 102 | 94 | 85 | 77 | 78 | 70 | 63 | 58 | | 48 |
| 52 | 107 | 104 | 98 | 90 | 82 | 74 | 76 | 68 | 61 | 56 | | 52 |
| 56 | 101 | 98 | 93 | 86 | 78 | 71 | 73 | 66 | 59 | 54 | | 56 |
| 60 | 97 | 93 | 87 | 82 | 74 | 68 | 70 | 64 | 57 | 53 | | 60 |
| 64 | | 88 | 83 | 77 | 71 | 65 | 68 | 61 | 55 | 51 | | 64 |
| 68 | | 84 | 79 | 73 | 67 | 61 | 65 | 59 | 53 | 49 | | 68 |
| 72 | | 77 | 75 | 69 | 63 | 58 | 62 | 57 | 51 | 47,5 | | 72 |
| 76 | | | 71 | 66 | 60 | 55 | 59 | 54 | 49 | 45,5 | | 76 |
| 80 | | | | 61 | 54 | 49,5 | 54 | 49,5 | 44,5 | 42 | | 80 |
| 84 | | | | | 51 | 47 | 52 | 47 | 42,5 | 40,5 | | 84 |
| 88 | | | | | | 44,5 | 49,5 | 45 | 40,5 | 38 | | 88 |
| 92 | | | | | | 42,5 | 47,5 | 43 | 38,5 | 36,5 | | 92 |
| 96 | | | | | | | 45 | 41 | 37 | 34,5 | | 96 |
| 100 | | | | | | | | 39 | 35,5 | 33,5 | | 100 |
| 104 | | | | | | | | 38 | 33,5 | 32 | | 104 |
| 108 | | | | | | | | | 32 | 30,5 | | 108 |
| 112 | | | | | | | | | | 28,7 | | 112 |
| 116 | | | | | | | | | | 27,7 | | 116 |

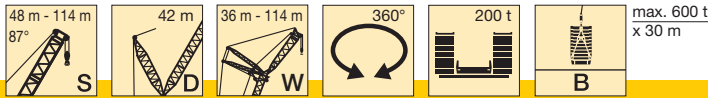
VKTAB 190083

Traglasten am SDWB2-Auslegersystem

Lifting capacities on SDWB2 boom/jib combination

Forces de levage en configuration SDWB2 · Portate con sistema braccio SDWB2

Tablas de carga con sistema de pluma SDWB2 · Грузоподъемность на стреловой системе SDWB2



Vorläufig
Préliminaire · Provisorio
Provisional · Временно
Preliminary

| m | 48 m | | | | | | | | | | | | | m | |
|-----|------|------|------|------|------|------|------|------|------|------|------|-------|-------|-----|-------|
| | 36 m | 42 m | 48 m | 54 m | 60 m | 66 m | 72 m | 78 m | 84 m | 90 m | 96 m | 102 m | 108 m | | 114 m |
| 16 | 628 | | | | | | | | | | | | | | 16 |
| 18 | 620 | 539 | | | | | | | | | | | | | 18 |
| 20 | 607 | 533 | 469 | 412 | | | | | | | | | | | 20 |
| 22 | 588 | 522 | 464 | 407 | 359 | | | | | | | | | | 22 |
| 24 | 566 | 512 | 458 | 402 | 356 | 312 | 274 | | | | | | | | 24 |
| 26 | 528 | 500 | 449 | 397 | 351 | 309 | 272 | 238 | | | | | | | 26 |
| 28 | 489 | 474 | 440 | 389 | 346 | 305 | 270 | 237 | 208 | 193 | | | | | 28 |
| 30 | 450 | 440 | 428 | 383 | 342 | 301 | 267 | 235 | 207 | 191 | 153 | | | | 30 |
| 32 | 412 | 409 | 401 | 377 | 336 | 298 | 264 | 233 | 205 | 190 | 150 | 141 | 124 | | 32 |
| 34 | 378 | 379 | 375 | 359 | 331 | 294 | 261 | 231 | 203 | 188 | 147 | 139 | 122 | 109 | 34 |
| 36 | 343 | 351 | 352 | 340 | 323 | 290 | 256 | 228 | 201 | 186 | 144 | 137 | 121 | 107 | 36 |
| 38 | 304 | 326 | 329 | 320 | 308 | 286 | 251 | 226 | 199 | 185 | 141 | 135 | 120 | 106 | 38 |
| 40 | | 301 | 306 | 302 | 293 | 276 | 247 | 224 | 196 | 183 | 138 | 133 | 118 | 104 | 40 |
| 44 | | | 267 | 266 | 264 | 259 | 234 | 220 | 191 | 179 | 133 | 129 | 116 | 101 | 44 |
| 48 | | | 226 | 237 | 234 | 235 | 219 | 214 | 185 | 176 | 128 | 126 | 114 | 98 | 48 |
| 52 | | | | 207 | 210 | 210 | 202 | 208 | 177 | 169 | 123 | 122 | 112 | 95 | 52 |
| 56 | | | | 170 | 184 | 190 | 185 | 190 | 169 | 162 | 119 | 119 | 109 | 92 | 56 |
| 60 | | | | | 153 | 170 | 170 | 172 | 162 | 153 | 115 | 116 | 107 | 89 | 60 |
| 64 | | | | | | 145 | 155 | 157 | 154 | 144 | 111 | 112 | 104 | 86 | 64 |
| 68 | | | | | | 105 | 134 | 142 | 142 | 135 | 107 | 110 | 102 | 83 | 68 |
| 72 | | | | | | | 110 | 126 | 129 | 127 | 104 | 107 | 99 | 80 | 72 |
| 76 | | | | | | | 72 | 109 | 115 | 119 | 101 | 105 | 97 | 77 | 76 |
| 80 | | | | | | | | 87 | 101 | 111 | 99 | 102 | 94 | 74 | 80 |
| 84 | | | | | | | | | 85 | 103 | 96 | 100 | 92 | 71 | 84 |
| 88 | | | | | | | | | 56 | 94 | 92 | 98 | 90 | 68 | 88 |
| 92 | | | | | | | | | | 75 | 87 | 90 | 88 | 65 | 92 |
| 96 | | | | | | | | | | | 75 | 81 | 82 | 63 | 96 |
| 100 | | | | | | | | | | | 50 | 70 | 74 | 60 | 100 |
| 104 | | | | | | | | | | | | 54 | 66 | 58 | 104 |
| 108 | | | | | | | | | | | | | 54 | 55 | 108 |
| 112 | | | | | | | | | | | | | 35 | 50 | 112 |
| 116 | | | | | | | | | | | | | | 40 | 116 |

VKTAB 190084

| m | 54 m | | | | | | | | | | | | | m | |
|-----|------|------|------|------|------|------|------|------|------|------|------|-------|-------|------|-------|
| | 36 m | 42 m | 48 m | 54 m | 60 m | 66 m | 72 m | 78 m | 84 m | 90 m | 96 m | 102 m | 108 m | | 114 m |
| 16 | 575 | | | | | | | | | | | | | | 16 |
| 18 | 567 | 499 | | | | | | | | | | | | | 18 |
| 20 | 554 | 491 | 436 | 384 | | | | | | | | | | | 20 |
| 22 | 540 | 483 | 429 | 381 | 338 | | | | | | | | | | 22 |
| 24 | 525 | 472 | 423 | 376 | 334 | 294 | | | | | | | | | 24 |
| 26 | 504 | 461 | 415 | 371 | 329 | 291 | 256 | 226 | | | | | | | 26 |
| 28 | 481 | 447 | 406 | 365 | 325 | 288 | 254 | 224 | 198 | 184 | | | | | 28 |
| 30 | 453 | 430 | 397 | 358 | 321 | 284 | 252 | 222 | 196 | 182 | 148 | | | | 30 |
| 32 | 423 | 410 | 384 | 351 | 316 | 281 | 249 | 220 | 195 | 181 | 146 | 136 | 120 | | 32 |
| 34 | 389 | 385 | 370 | 343 | 312 | 277 | 246 | 218 | 193 | 179 | 143 | 134 | 119 | 105 | 34 |
| 36 | 355 | 360 | 352 | 333 | 306 | 274 | 242 | 216 | 191 | 178 | 140 | 132 | 118 | 104 | 36 |
| 38 | 318 | 335 | 332 | 323 | 297 | 270 | 238 | 214 | 189 | 177 | 137 | 131 | 116 | 102 | 38 |
| 40 | | 309 | 312 | 307 | 290 | 263 | 234 | 212 | 187 | 175 | 135 | 129 | 115 | 101 | 40 |
| 44 | | 255 | 273 | 275 | 268 | 249 | 224 | 207 | 181 | 172 | 130 | 125 | 113 | 98 | 44 |
| 48 | | | 233 | 244 | 242 | 232 | 213 | 203 | 176 | 168 | 125 | 122 | 111 | 95 | 48 |
| 52 | | | | 213 | 216 | 213 | 197 | 199 | 169 | 163 | 120 | 119 | 108 | 92 | 52 |
| 56 | | | | 182 | 190 | 194 | 181 | 186 | 163 | 157 | 116 | 115 | 106 | 89 | 56 |
| 60 | | | | | 163 | 175 | 167 | 174 | 156 | 150 | 112 | 112 | 103 | 86 | 60 |
| 64 | | | | | | 153 | 154 | 160 | 148 | 142 | 109 | 109 | 101 | 83 | 64 |
| 68 | | | | | | 118 | 138 | 144 | 139 | 133 | 105 | 107 | 98 | 80 | 68 |
| 72 | | | | | | | 122 | 129 | 129 | 126 | 102 | 104 | 95 | 77 | 72 |
| 76 | | | | | | | 81 | 114 | 118 | 118 | 100 | 102 | 93 | 75 | 76 |
| 80 | | | | | | | | 94 | 105 | 111 | 97 | 100 | 91 | 72 | 80 |
| 84 | | | | | | | | | 91 | 104 | 95 | 98 | 88 | 69 | 84 |
| 88 | | | | | | | | | 63 | 96 | 91 | 97 | 86 | 66 | 88 |
| 92 | | | | | | | | | | 82 | 88 | 90 | 84 | 64 | 92 |
| 96 | | | | | | | | | | | 80 | 83 | 81 | 61 | 96 |
| 100 | | | | | | | | | | | 56 | 74 | 76 | 58 | 100 |
| 104 | | | | | | | | | | | | 60 | 70 | 56 | 104 |
| 108 | | | | | | | | | | | | | 61 | 53 | 108 |
| 112 | | | | | | | | | | | | | 40,5 | 51 | 112 |
| 116 | | | | | | | | | | | | | | 44,5 | 116 |

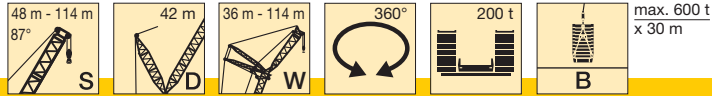
VKTAB 190084

Traglasten am SDWB2-Auslegersystem

Lifting capacities on SDWB2 boom/jib combination

Forces de levage en configuration SDWB2 · Portate con sistema braccio SDWB2

Tablas de carga con sistema de pluma SDWB2 · Грузоподъемность на стреловой системе SDWB2



Vorläufig
Préliminaire · Provisorio
Provisional · Временно
Preliminary

| m | 60 m | | | | | | | | | | | | | m | |
|-----|------|------|------|------|------|------|------|------|------|------|------|-------|-------|------|-------|
| | 36 m | 42 m | 48 m | 54 m | 60 m | 66 m | 72 m | 78 m | 84 m | 90 m | 96 m | 102 m | 108 m | | 114 m |
| 18 | 518 | 461 | | | | | | | | | | | | | 18 |
| 20 | 509 | 453 | 404 | | | | | | | | | | | | 20 |
| 22 | 494 | 445 | 398 | 355 | 315 | | | | | | | | | | 22 |
| 24 | 477 | 436 | 392 | 349 | 313 | 276 | | | | | | | | | 24 |
| 26 | 459 | 423 | 386 | 345 | 309 | 273 | 241 | 213 | | | | | | | 26 |
| 28 | 441 | 409 | 376 | 340 | 304 | 270 | 239 | 212 | 187 | 176 | | | | | 28 |
| 30 | 419 | 395 | 366 | 333 | 299 | 267 | 237 | 210 | 186 | 175 | 143 | | | | 30 |
| 32 | 397 | 380 | 352 | 325 | 294 | 263 | 234 | 208 | 184 | 173 | 141 | 131 | 115 | | 32 |
| 34 | 379 | 363 | 341 | 316 | 289 | 260 | 231 | 206 | 183 | 172 | 138 | 129 | 115 | 101 | 34 |
| 36 | 360 | 345 | 328 | 305 | 284 | 256 | 228 | 204 | 181 | 171 | 136 | 128 | 113 | 100 | 36 |
| 38 | 323 | 329 | 315 | 296 | 276 | 253 | 224 | 201 | 179 | 169 | 133 | 126 | 112 | 99 | 38 |
| 40 | | 312 | 301 | 285 | 268 | 248 | 221 | 199 | 178 | 168 | 131 | 124 | 111 | 97 | 40 |
| 44 | | 261 | 275 | 263 | 251 | 237 | 213 | 195 | 172 | 165 | 126 | 121 | 109 | 94 | 44 |
| 48 | | | 240 | 243 | 232 | 222 | 204 | 190 | 167 | 162 | 122 | 118 | 107 | 92 | 48 |
| 52 | | | | 218 | 213 | 206 | 191 | 185 | 161 | 158 | 117 | 115 | 104 | 89 | 52 |
| 56 | | | | 184 | 193 | 191 | 177 | 175 | 156 | 154 | 114 | 112 | 102 | 86 | 56 |
| 60 | | | | | 164 | 177 | 165 | 165 | 149 | 148 | 110 | 109 | 99 | 83 | 60 |
| 64 | | | | | | 154 | 152 | 155 | 142 | 141 | 106 | 106 | 97 | 80 | 64 |
| 68 | | | | | | 123 | 138 | 145 | 135 | 133 | 103 | 103 | 94 | 78 | 68 |
| 72 | | | | | | | 122 | 132 | 128 | 126 | 100 | 101 | 92 | 75 | 72 |
| 76 | | | | | | | 87 | 115 | 120 | 119 | 97 | 99 | 89 | 72 | 76 |
| 80 | | | | | | | | 98 | 106 | 112 | 95 | 97 | 87 | 69 | 80 |
| 84 | | | | | | | | | 92 | 105 | 93 | 95 | 85 | 67 | 84 |
| 88 | | | | | | | | | 69 | 99 | 90 | 94 | 83 | 64 | 88 |
| 92 | | | | | | | | | | 86 | 88 | 89 | 81 | 61 | 92 |
| 96 | | | | | | | | | | | 81 | 82 | 78 | 59 | 96 |
| 100 | | | | | | | | | | | 61 | 75 | 74 | 56 | 100 |
| 104 | | | | | | | | | | | | 64 | 70 | 54 | 104 |
| 108 | | | | | | | | | | | | | 62 | 52 | 108 |
| 112 | | | | | | | | | | | | | 44,5 | 49,5 | 112 |
| 116 | | | | | | | | | | | | | | 45 | 116 |

VKTAB 190084

| m | 66 m | | | | | | | | | | | | | m | |
|-----|------|------|------|------|------|------|------|------|------|------|------|-------|-------|------|-------|
| | 36 m | 42 m | 48 m | 54 m | 60 m | 66 m | 72 m | 78 m | 84 m | 90 m | 96 m | 102 m | 108 m | | 114 m |
| 18 | 477 | 424 | | | | | | | | | | | | | 18 |
| 20 | 466 | 418 | 374 | | | | | | | | | | | | 20 |
| 22 | 454 | 409 | 369 | 330 | 295 | | | | | | | | | | 22 |
| 24 | 437 | 401 | 361 | 327 | 293 | 258 | | | | | | | | | 24 |
| 26 | 420 | 388 | 355 | 320 | 289 | 256 | 228 | | | | | | | | 26 |
| 28 | 402 | 375 | 344 | 314 | 285 | 253 | 226 | 199 | 178 | | | | | | 28 |
| 30 | 383 | 362 | 334 | 307 | 280 | 250 | 224 | 198 | 177 | 166 | 138 | | | | 30 |
| 32 | 366 | 348 | 324 | 299 | 274 | 246 | 221 | 196 | 175 | 165 | 136 | 126 | | | 32 |
| 34 | 349 | 332 | 313 | 291 | 267 | 242 | 219 | 194 | 174 | 163 | 133 | 125 | 110 | 97 | 34 |
| 36 | 332 | 317 | 302 | 282 | 261 | 237 | 215 | 192 | 172 | 162 | 131 | 123 | 109 | 96 | 36 |
| 38 | 311 | 304 | 290 | 274 | 254 | 232 | 212 | 190 | 171 | 161 | 129 | 121 | 108 | 95 | 38 |
| 40 | | 290 | 278 | 265 | 248 | 227 | 209 | 187 | 169 | 159 | 127 | 120 | 107 | 94 | 40 |
| 44 | | 249 | 255 | 246 | 233 | 217 | 201 | 182 | 164 | 157 | 122 | 117 | 105 | 91 | 44 |
| 48 | | | 230 | 227 | 218 | 205 | 192 | 176 | 159 | 154 | 118 | 114 | 103 | 88 | 48 |
| 52 | | | | 207 | 203 | 192 | 182 | 169 | 154 | 150 | 114 | 111 | 100 | 86 | 52 |
| 56 | | | | 185 | 188 | 180 | 172 | 161 | 149 | 146 | 110 | 108 | 98 | 83 | 56 |
| 60 | | | | | 164 | 167 | 161 | 152 | 142 | 142 | 107 | 105 | 95 | 80 | 60 |
| 64 | | | | | | 150 | 150 | 143 | 136 | 136 | 104 | 103 | 93 | 77 | 64 |
| 68 | | | | | | 125 | 136 | 135 | 129 | 130 | 100 | 100 | 90 | 75 | 68 |
| 72 | | | | | | | 121 | 124 | 122 | 123 | 97 | 98 | 88 | 72 | 72 |
| 76 | | | | | | | 89 | 112 | 114 | 117 | 95 | 95 | 85 | 69 | 76 |
| 80 | | | | | | | | 97 | 104 | 110 | 93 | 93 | 83 | 67 | 80 |
| 84 | | | | | | | | | 94 | 104 | 90 | 91 | 81 | 64 | 84 |
| 88 | | | | | | | | | 73 | 97 | 88 | 89 | 79 | 61 | 88 |
| 92 | | | | | | | | | | 85 | 86 | 85 | 77 | 59 | 92 |
| 96 | | | | | | | | | | | 80 | 80 | 74 | 57 | 96 |
| 100 | | | | | | | | | | | 63 | 74 | 71 | 54 | 100 |
| 104 | | | | | | | | | | | | 63 | 67 | 52 | 104 |
| 108 | | | | | | | | | | | | | 61 | 49,5 | 108 |
| 112 | | | | | | | | | | | | | 46,5 | 47,5 | 112 |
| 116 | | | | | | | | | | | | | | 45 | 116 |

VKTAB 190084

Traglasten am SDWB2-Auslegersystem
Lifting capacities on SDWB2 boom/jib combination
Forces de levage en configuration SDWB2 · Portate con sistema braccio SDWB2
Tablas de carga con sistema de pluma SDWB2 · Грузоподъемность на стреловой системе SDWB2



Vorläufig
Préliminaire · Provisorio
Провизорно
Preliminary

| m | 72 m | | | | | | | | | | | | | | m |
|-----|------|------|------|------|------|------|------|------|------|------|------|-------|-------|-------|-----|
| | 36 m | 42 m | 48 m | 54 m | 60 m | 66 m | 72 m | 78 m | 84 m | 90 m | 96 m | 102 m | 108 m | 114 m | |
| 18 | 438 | | | | | | | | | | | | | | 18 |
| 20 | 426 | | | | | | | | | | | | | | 20 |
| 22 | 413 | 386 | 346 | | | | | | | | | | | | 22 |
| 24 | 398 | 366 | 336 | 306 | | | | | | | | | | | 24 |
| 26 | 383 | 354 | 325 | 297 | 268 | 239 | 214 | | | | | | | | 26 |
| 28 | 368 | 342 | 315 | 288 | 264 | 236 | 212 | 187 | 167 | | | | | | 28 |
| 30 | 354 | 330 | 306 | 281 | 258 | 233 | 209 | 185 | 166 | 157 | 132 | | | | 30 |
| 32 | 341 | 318 | 296 | 273 | 251 | 229 | 207 | 184 | 165 | 156 | 130 | 121 | | | 32 |
| 34 | 326 | 307 | 287 | 265 | 245 | 223 | 204 | 182 | 163 | 154 | 128 | 119 | 105 | | 34 |
| 36 | 311 | 296 | 277 | 258 | 239 | 218 | 202 | 180 | 162 | 153 | 126 | 118 | 105 | 92 | 36 |
| 38 | 297 | 285 | 268 | 250 | 232 | 213 | 196 | 178 | 160 | 152 | 124 | 116 | 104 | 91 | 38 |
| 40 | | 273 | 258 | 242 | 226 | 208 | 192 | 175 | 159 | 151 | 122 | 115 | 102 | 90 | 40 |
| 44 | | 251 | 239 | 227 | 213 | 198 | 184 | 168 | 155 | 148 | 118 | 112 | 100 | 87 | 44 |
| 48 | | | 221 | 211 | 200 | 188 | 176 | 162 | 149 | 145 | 114 | 109 | 98 | 85 | 48 |
| 52 | | | | 195 | 187 | 177 | 167 | 155 | 144 | 140 | 110 | 106 | 96 | 82 | 52 |
| 56 | | | | 181 | 174 | 166 | 158 | 148 | 138 | 136 | 107 | 104 | 93 | 79 | 56 |
| 60 | | | | | 161 | 155 | 149 | 140 | 132 | 131 | 103 | 101 | 91 | 77 | 60 |
| 64 | | | | | | 144 | 139 | 132 | 126 | 126 | 100 | 99 | 89 | 74 | 64 |
| 68 | | | | | | 132 | 130 | 124 | 119 | 121 | 97 | 96 | 86 | 72 | 68 |
| 72 | | | | | | | 122 | 116 | 112 | 115 | 94 | 94 | 84 | 69 | 72 |
| 76 | | | | | | | 97 | 109 | 105 | 109 | 92 | 92 | 81 | 66 | 76 |
| 80 | | | | | | | | 98 | 99 | 103 | 90 | 89 | 79 | 64 | 80 |
| 84 | | | | | | | | 61 | 92 | 98 | 88 | 86 | 77 | 61 | 84 |
| 88 | | | | | | | | | 78 | 92 | 85 | 82 | 75 | 59 | 88 |
| 92 | | | | | | | | | | 85 | 81 | 78 | 73 | 56 | 92 |
| 96 | | | | | | | | | | 60 | 77 | 74 | 71 | 54 | 96 |
| 100 | | | | | | | | | | | 67 | 69 | 67 | 51 | 100 |
| 104 | | | | | | | | | | | | 64 | 63 | 49,5 | 104 |
| 108 | | | | | | | | | | | | | 44,5 | 59 | 108 |
| 112 | | | | | | | | | | | | | | 49 | 112 |
| 116 | | | | | | | | | | | | | | | 116 |
| 120 | | | | | | | | | | | | | | | 120 |

VKTAB 190084

| m | 78 m | | | | | | | | | | | | | | m |
|-----|------|------|------|------|------|------|------|------|------|------|------|-------|-------|-------|-----|
| | 36 m | 42 m | 48 m | 54 m | 60 m | 66 m | 72 m | 78 m | 84 m | 90 m | 96 m | 102 m | 108 m | 114 m | |
| 18 | 401 | | | | | | | | | | | | | | 18 |
| 20 | 393 | 354 | 319 | | | | | | | | | | | | 20 |
| 22 | 377 | 346 | 314 | 284 | | | | | | | | | | | 22 |
| 24 | 363 | 336 | 307 | 280 | 251 | | | | | | | | | | 24 |
| 26 | 349 | 322 | 298 | 273 | 247 | 223 | 199 | | | | | | | | 26 |
| 28 | 336 | 312 | 288 | 267 | 242 | 220 | 197 | 177 | | | | | | | 28 |
| 30 | 323 | 301 | 279 | 260 | 237 | 216 | 195 | 175 | 156 | 148 | | | | | 30 |
| 32 | 311 | 290 | 270 | 251 | 231 | 212 | 192 | 173 | 155 | 147 | 124 | 116 | | | 32 |
| 34 | 299 | 280 | 261 | 243 | 224 | 208 | 189 | 171 | 153 | 146 | 122 | 115 | 101 | | 34 |
| 36 | 287 | 270 | 252 | 236 | 218 | 203 | 185 | 169 | 152 | 144 | 121 | 114 | 100 | 88 | 36 |
| 38 | 276 | 260 | 245 | 229 | 212 | 197 | 182 | 166 | 150 | 143 | 119 | 112 | 99 | 87 | 38 |
| 40 | | 250 | 237 | 222 | 206 | 192 | 178 | 163 | 148 | 142 | 117 | 111 | 98 | 86 | 40 |
| 44 | | 232 | 220 | 209 | 195 | 182 | 169 | 157 | 143 | 138 | 113 | 108 | 96 | 83 | 44 |
| 48 | | | 204 | 196 | 184 | 173 | 161 | 150 | 138 | 135 | 110 | 106 | 93 | 81 | 48 |
| 52 | | | | 182 | 173 | 164 | 153 | 143 | 132 | 130 | 106 | 103 | 91 | 78 | 52 |
| 56 | | | | 169 | 161 | 154 | 145 | 137 | 126 | 125 | 103 | 101 | 89 | 76 | 56 |
| 60 | | | | | 150 | 144 | 137 | 130 | 121 | 121 | 100 | 98 | 87 | 73 | 60 |
| 64 | | | | | 138 | 135 | 128 | 123 | 115 | 116 | 97 | 96 | 84 | 71 | 64 |
| 68 | | | | | | 125 | 120 | 116 | 110 | 112 | 94 | 94 | 82 | 68 | 68 |
| 72 | | | | | | | 112 | 108 | 103 | 106 | 91 | 91 | 80 | 66 | 72 |
| 76 | | | | | | | 103 | 102 | 97 | 101 | 89 | 89 | 78 | 63 | 76 |
| 80 | | | | | | | | 95 | 91 | 95 | 87 | 86 | 75 | 61 | 80 |
| 84 | | | | | | | | 68 | 85 | 90 | 84 | 82 | 73 | 58 | 84 |
| 88 | | | | | | | | | 80 | 85 | 81 | 78 | 70 | 56 | 88 |
| 92 | | | | | | | | | | 80 | 76 | 74 | 68 | 54 | 92 |
| 96 | | | | | | | | | | 63 | 71 | 70 | 65 | 51 | 96 |
| 100 | | | | | | | | | | | 64 | 65 | 62 | 49 | 100 |
| 104 | | | | | | | | | | | | 61 | 58 | 47 | 104 |
| 108 | | | | | | | | | | | | | 47,5 | 54 | 108 |
| 112 | | | | | | | | | | | | | | 47 | 112 |
| 116 | | | | | | | | | | | | | | | 116 |
| 120 | | | | | | | | | | | | | | | 120 |

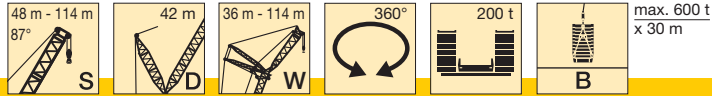
VKTAB 190084

Traglasten am SDWB2-Auslegersystem

Lifting capacities on SDWB2 boom/jib combination

Forces de levage en configuration SDWB2 · Portate con sistema braccio SDWB2

Tablas de carga con sistema de pluma SDWB2 · Грузоподъемность на стреловой системе SDWB2



Vorläufig
Préliminaire · Provisorio
Provisional · Временно
Preliminary

| m | 84 m | | | | | | | | | | | | | | m |
|-----|------|------|------|------|------|------|------|------|------|------|------|-------|-------|-------|-----|
| | 36 m | 42 m | 48 m | 54 m | 60 m | 66 m | 72 m | 78 m | 84 m | 90 m | 96 m | 102 m | 108 m | 114 m | |
| 18 | 363 | | | | | | | | | | | | | | 18 |
| 20 | 355 | 323 | | | | | | | | | | | | | 20 |
| 22 | 343 | 315 | 287 | 258 | | | | | | | | | | | 22 |
| 24 | 331 | 305 | 280 | 254 | 229 | | | | | | | | | | 24 |
| 26 | 317 | 296 | 272 | 248 | 226 | 202 | 181 | | | | | | | | 26 |
| 28 | 305 | 284 | 264 | 242 | 222 | 200 | 179 | 161 | | | | | | | 28 |
| 30 | 293 | 274 | 256 | 236 | 217 | 197 | 177 | 160 | 143 | 137 | | | | | 30 |
| 32 | 282 | 264 | 246 | 229 | 212 | 193 | 174 | 158 | 141 | 135 | 119 | 110 | | | 32 |
| 34 | 272 | 255 | 239 | 223 | 206 | 189 | 172 | 156 | 140 | 134 | 118 | 109 | 95 | | 34 |
| 36 | 263 | 247 | 231 | 215 | 201 | 184 | 169 | 154 | 138 | 133 | 116 | 107 | 94 | 83 | 36 |
| 38 | 253 | 238 | 224 | 208 | 195 | 180 | 165 | 151 | 137 | 132 | 114 | 106 | 93 | 82 | 38 |
| 40 | | 230 | 216 | 202 | 189 | 176 | 162 | 149 | 135 | 130 | 112 | 105 | 92 | 81 | 40 |
| 44 | | 214 | 202 | 190 | 178 | 166 | 154 | 143 | 130 | 127 | 109 | 103 | 90 | 78 | 44 |
| 48 | | | 189 | 178 | 168 | 157 | 146 | 137 | 126 | 123 | 106 | 100 | 88 | 76 | 48 |
| 52 | | | 176 | 167 | 159 | 149 | 139 | 130 | 121 | 119 | 103 | 98 | 86 | 74 | 52 |
| 56 | | | | 156 | 149 | 140 | 132 | 124 | 115 | 115 | 100 | 95 | 83 | 72 | 56 |
| 60 | | | | | 139 | 132 | 125 | 118 | 110 | 111 | 97 | 93 | 81 | 69 | 60 |
| 64 | | | | | 130 | 123 | 117 | 112 | 105 | 106 | 94 | 91 | 79 | 67 | 64 |
| 68 | | | | | | 115 | 110 | 106 | 99 | 102 | 91 | 89 | 77 | 64 | 68 |
| 72 | | | | | | | 103 | 99 | 94 | 97 | 88 | 85 | 75 | 62 | 72 |
| 76 | | | | | | | 97 | 93 | 88 | 92 | 86 | 82 | 73 | 60 | 76 |
| 80 | | | | | | | | 87 | 83 | 88 | 83 | 79 | 71 | 57 | 80 |
| 84 | | | | | | | | 70 | 77 | 83 | 80 | 75 | 68 | 55 | 84 |
| 88 | | | | | | | | | 73 | 78 | 76 | 72 | 66 | 53 | 88 |
| 92 | | | | | | | | | | 74 | 72 | 68 | 63 | 51 | 92 |
| 96 | | | | | | | | | | 64 | 67 | 64 | 60 | 48,5 | 96 |
| 100 | | | | | | | | | | | 62 | 60 | 57 | 46,5 | 100 |
| 104 | | | | | | | | | | | | 56 | 53 | 44,5 | 104 |
| 108 | | | | | | | | | | | | 48 | 49 | 42,5 | 108 |
| 112 | | | | | | | | | | | | | 44,5 | 40,5 | 112 |
| 116 | | | | | | | | | | | | | | 39 | 116 |
| 120 | | | | | | | | | | | | | | 34,5 | 120 |

VKTAB 190084

| m | 90 m | | | | | | | | | | | | | m |
|-----|------|------|------|------|------|------|------|------|------|------|-------|-------|-------|-----|
| | 42 m | 48 m | 54 m | 60 m | 66 m | 72 m | 78 m | 84 m | 90 m | 96 m | 102 m | 108 m | 114 m | |
| 20 | 292 | | | | | | | | | | | | | 20 |
| 22 | 285 | 259 | 235 | | | | | | | | | | | 22 |
| 24 | 277 | 253 | 231 | 207 | | | | | | | | | | 24 |
| 26 | 268 | 247 | 226 | 204 | 183 | | | | | | | | | 26 |
| 28 | 260 | 240 | 221 | 201 | 181 | 164 | 147 | | | | | | | 28 |
| 30 | 251 | 233 | 216 | 196 | 178 | 162 | 145 | 130 | 126 | | | | | 30 |
| 32 | 243 | 226 | 210 | 192 | 175 | 160 | 143 | 129 | 124 | 112 | | | | 32 |
| 34 | 233 | 219 | 204 | 187 | 171 | 157 | 142 | 127 | 123 | 111 | 101 | 88 | | 34 |
| 36 | 225 | 211 | 198 | 183 | 168 | 155 | 139 | 126 | 122 | 109 | 100 | 87 | 78 | 36 |
| 38 | 217 | 204 | 192 | 178 | 164 | 152 | 137 | 124 | 120 | 108 | 99 | 86 | 77 | 38 |
| 40 | 210 | 197 | 186 | 173 | 160 | 148 | 135 | 122 | 119 | 106 | 98 | 86 | 76 | 40 |
| 44 | 197 | 185 | 175 | 162 | 152 | 142 | 130 | 118 | 116 | 103 | 96 | 84 | 74 | 44 |
| 48 | | 174 | 165 | 153 | 143 | 135 | 124 | 114 | 112 | 100 | 94 | 82 | 71 | 48 |
| 52 | | 162 | 155 | 145 | 135 | 129 | 119 | 109 | 109 | 97 | 91 | 80 | 69 | 52 |
| 56 | | | 145 | 136 | 128 | 121 | 113 | 104 | 105 | 95 | 89 | 78 | 67 | 56 |
| 60 | | | | 128 | 121 | 115 | 107 | 100 | 101 | 92 | 86 | 76 | 65 | 60 |
| 64 | | | | 118 | 113 | 109 | 101 | 94 | 97 | 89 | 84 | 74 | 63 | 64 |
| 68 | | | | | 106 | 102 | 96 | 90 | 93 | 87 | 81 | 72 | 60 | 68 |
| 72 | | | | | 90 | 96 | 91 | 85 | 88 | 84 | 78 | 70 | 58 | 72 |
| 76 | | | | | | 90 | 85 | 80 | 84 | 80 | 75 | 67 | 56 | 76 |
| 80 | | | | | | | 80 | 75 | 80 | 77 | 72 | 65 | 54 | 80 |
| 84 | | | | | | | 70 | 71 | 76 | 73 | 68 | 63 | 51 | 84 |
| 88 | | | | | | | | 66 | 72 | 69 | 65 | 60 | 49,5 | 88 |
| 92 | | | | | | | | | 67 | 65 | 62 | 57 | 47,5 | 92 |
| 96 | | | | | | | | | 63 | 61 | 58 | 54 | 45,5 | 96 |
| 100 | | | | | | | | | | 57 | 54 | 51 | 43,5 | 100 |
| 104 | | | | | | | | | | | 51 | 47,5 | 41,5 | 104 |
| 108 | | | | | | | | | | | 47 | 44,5 | 40 | 108 |
| 112 | | | | | | | | | | | | 41,5 | 38 | 112 |
| 116 | | | | | | | | | | | | | 35,5 | 116 |
| 120 | | | | | | | | | | | | | 34 | 120 |

VKTAB 190084

Traglasten am SDWB2-Auslegersystem

Lifting capacities on SDWB2 boom/jib combination

Forces de levage en configuration SDWB2 · Portate con sistema braccio SDWB2

Tablas de carga con sistema de pluma SDWB2 · Грузоподъемность на стреловой системе SDWB2



Vorläufig
Préliminaire · Provisorio
Provisional · Временно
Preliminary

| m | 96 m | | | | | | | | | | | | | m |
|-----|------|------|------|------|------|------|------|------|------|------|-------|-------|-------|-----|
| | 42 m | 48 m | 54 m | 60 m | 66 m | 72 m | 78 m | 84 m | 90 m | 96 m | 102 m | 108 m | 114 m | |
| 20 | 265 | | | | | | | | | | | | | 20 |
| 22 | 259 | 235 | | | | | | | | | | | | 22 |
| 24 | 253 | 231 | 209 | 188 | | | | | | | | | | 24 |
| 26 | 245 | 225 | 205 | 185 | 168 | | | | | | | | | 26 |
| 28 | 238 | 220 | 201 | 182 | 165 | 149 | 134 | | | | | | | 28 |
| 30 | 231 | 214 | 197 | 178 | 163 | 147 | 132 | 120 | 117 | | | | | 30 |
| 32 | 223 | 207 | 191 | 175 | 160 | 145 | 130 | 119 | 116 | 104 | | | | 32 |
| 34 | 216 | 201 | 186 | 171 | 157 | 143 | 129 | 117 | 115 | 103 | 92 | 81 | | 34 |
| 36 | 209 | 195 | 181 | 166 | 154 | 140 | 127 | 116 | 113 | 101 | 92 | 80 | 71 | 36 |
| 38 | 200 | 189 | 176 | 162 | 151 | 138 | 125 | 114 | 112 | 100 | 90 | 79 | 71 | 38 |
| 40 | 194 | 183 | 171 | 158 | 147 | 135 | 122 | 113 | 111 | 99 | 90 | 79 | 70 | 40 |
| 44 | 183 | 171 | 161 | 149 | 140 | 129 | 118 | 109 | 108 | 97 | 88 | 77 | 69 | 44 |
| 48 | | 161 | 151 | 141 | 133 | 123 | 113 | 105 | 105 | 95 | 86 | 75 | 67 | 48 |
| 52 | | 152 | 142 | 132 | 126 | 117 | 108 | 101 | 101 | 92 | 83 | 73 | 65 | 52 |
| 56 | | | 134 | 125 | 118 | 112 | 103 | 97 | 98 | 89 | 81 | 72 | 63 | 56 |
| 60 | | | 127 | 118 | 112 | 105 | 98 | 92 | 94 | 86 | 79 | 70 | 61 | 60 |
| 64 | | | | 111 | 106 | 100 | 92 | 88 | 91 | 83 | 76 | 68 | 59 | 64 |
| 68 | | | | | 100 | 94 | 88 | 84 | 87 | 80 | 74 | 66 | 56 | 68 |
| 72 | | | | | 91 | 89 | 83 | 79 | 83 | 77 | 71 | 64 | 54 | 72 |
| 76 | | | | | | 83 | 78 | 75 | 80 | 74 | 68 | 61 | 52 | 76 |
| 80 | | | | | | | 73 | 71 | 76 | 71 | 66 | 59 | 50 | 80 |
| 84 | | | | | | | 68 | 66 | 72 | 67 | 63 | 57 | 48 | 84 |
| 88 | | | | | | | | 62 | 68 | 64 | 60 | 55 | 46 | 88 |
| 92 | | | | | | | | | 64 | 61 | 57 | 53 | 44 | 92 |
| 96 | | | | | | | | | 62 | 57 | 54 | 50 | 42,5 | 96 |
| 100 | | | | | | | | | | 54 | 51 | 47 | 40,5 | 100 |
| 104 | | | | | | | | | | | 48 | 44,5 | 39 | 104 |
| 108 | | | | | | | | | | | 46 | 42 | 37,5 | 108 |
| 112 | | | | | | | | | | | | 39,5 | 35,5 | 112 |
| 116 | | | | | | | | | | | | | 33,5 | 116 |
| 120 | | | | | | | | | | | | | 32 | 120 |

VKTAB 190084

| m | 102 m | | | | | | | | | | | m | | |
|-----|-------|------|------|------|------|------|------|------|------|-------|-------|------|-------|-----|
| | 48 m | 54 m | 60 m | 66 m | 72 m | 78 m | 84 m | 90 m | 96 m | 102 m | 108 m | | 114 m | |
| 22 | 211 | | | | | | | | | | | | 22 | |
| 24 | 207 | 187 | 170 | | | | | | | | | | 24 | |
| 26 | 202 | 184 | 168 | 151 | | | | | | | | | 26 | |
| 28 | 198 | 180 | 165 | 149 | 134 | | | | | | | | 28 | |
| 30 | 193 | 176 | 162 | 146 | 132 | 119 | 109 | | | | | | 30 | |
| 32 | 187 | 172 | 158 | 144 | 130 | 117 | 107 | 105 | 94 | | | | 32 | |
| 34 | 182 | 168 | 155 | 141 | 128 | 115 | 106 | 104 | 93 | 84 | | | 34 | |
| 36 | 177 | 164 | 151 | 138 | 126 | 113 | 104 | 103 | 92 | 83 | 73 | 64 | 36 | |
| 38 | 171 | 159 | 148 | 135 | 124 | 112 | 103 | 101 | 91 | 82 | 72 | 64 | 38 | |
| 40 | 166 | 155 | 144 | 132 | 121 | 110 | 101 | 100 | 90 | 81 | 71 | 63 | 40 | |
| 44 | 157 | 146 | 136 | 126 | 116 | 105 | 98 | 97 | 88 | 79 | 70 | 62 | 44 | |
| 48 | 147 | 138 | 129 | 120 | 111 | 101 | 94 | 94 | 85 | 77 | 68 | 60 | 48 | |
| 52 | 139 | 130 | 122 | 114 | 105 | 97 | 90 | 91 | 83 | 75 | 66 | 59 | 52 | |
| 56 | | 122 | 116 | 108 | 100 | 92 | 87 | 88 | 80 | 73 | 64 | 57 | 56 | |
| 60 | | 116 | 109 | 102 | 95 | 88 | 83 | 85 | 78 | 70 | 62 | 56 | 60 | |
| 64 | | | 103 | 96 | 90 | 83 | 79 | 82 | 75 | 68 | 60 | 54 | 64 | |
| 68 | | | | 91 | 86 | 79 | 75 | 78 | 72 | 66 | 59 | 52 | 68 | |
| 72 | | | | 86 | 80 | 75 | 71 | 75 | 69 | 63 | 57 | 50 | 72 | |
| 76 | | | | | 76 | 70 | 68 | 72 | 66 | 61 | 54 | 48 | 76 | |
| 80 | | | | | | 66 | 64 | 69 | 64 | 58 | 52 | 46 | 80 | |
| 84 | | | | | | | 63 | 60 | 66 | 61 | 56 | 50 | 44 | 84 |
| 88 | | | | | | | | 56 | 62 | 58 | 54 | 48,5 | 42,5 | 88 |
| 92 | | | | | | | | | 59 | 55 | 51 | 46 | 40,5 | 92 |
| 96 | | | | | | | | | 57 | 53 | 48,5 | 44 | 39 | 96 |
| 100 | | | | | | | | | | 50 | 46 | 42 | 37 | 100 |
| 104 | | | | | | | | | | | 44 | 40 | 35,5 | 104 |
| 108 | | | | | | | | | | | 42 | 38 | 34 | 108 |
| 112 | | | | | | | | | | | | 35,5 | 32,5 | 112 |
| 116 | | | | | | | | | | | | | 30,5 | 116 |
| 120 | | | | | | | | | | | | | 29,1 | 120 |

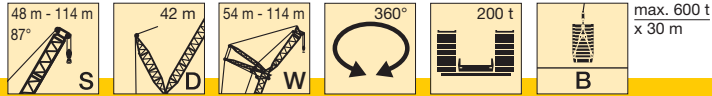
VKTAB 190084

Traglasten am SDWB2-Auslegersystem

Lifting capacities on SDWB2 boom/jib combination

Forces de levage en configuration SDWB2 · Portate con sistema braccio SDWB2

Tablas de carga con sistema de pluma SDWB2 · Грузоподъемность на стреловой системе SDWB2



Vorläufig
Préliminaire · Provisorio
Provisional · Временно
Preliminary

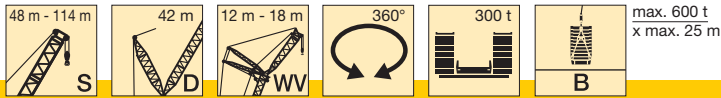
| m | 108 m | | | | | | | | | | | m |
|-----|-------|------|------|------|------|------|------|------|-------|-------|-------|-----|
| | 54 m | 60 m | 66 m | 72 m | 78 m | 84 m | 90 m | 96 m | 102 m | 108 m | 114 m | |
| 24 | 170 | | | | | | | | | | | 24 |
| 26 | 167 | | | | | | | | | | | 26 |
| 28 | 164 | 151 | 137 | | | | | | | | | 28 |
| 30 | 161 | 148 | 134 | 121 | | | | | | | | 30 |
| 32 | 157 | 146 | 132 | 119 | 109 | 98 | | | | | | 32 |
| 34 | 153 | 143 | 130 | 117 | 107 | 97 | 96 | 85 | | | | 34 |
| 36 | 150 | 140 | 127 | 115 | 106 | 95 | 95 | 85 | 76 | | | 36 |
| 38 | 146 | 137 | 125 | 113 | 104 | 94 | 94 | 84 | 75 | 66 | 60 | 38 |
| 40 | 142 | 133 | 122 | 111 | 102 | 92 | 92 | 83 | 74 | 65 | 60 | 40 |
| 44 | 134 | 130 | 119 | 109 | 100 | 91 | 91 | 82 | 74 | 65 | 59 | 44 |
| 48 | 127 | 124 | 114 | 105 | 97 | 88 | 88 | 79 | 72 | 63 | 58 | 48 |
| 52 | 120 | 117 | 109 | 100 | 93 | 84 | 85 | 77 | 70 | 61 | 57 | 52 |
| 56 | 114 | 111 | 103 | 95 | 89 | 81 | 83 | 75 | 68 | 60 | 55 | 56 |
| 60 | 108 | 105 | 98 | 91 | 85 | 78 | 80 | 72 | 66 | 58 | 53 | 60 |
| 64 | | 100 | 93 | 86 | 81 | 74 | 77 | 70 | 63 | 56 | 52 | 64 |
| 68 | | 95 | 88 | 82 | 77 | 71 | 74 | 67 | 61 | 54 | 50 | 68 |
| 72 | | 77 | 83 | 77 | 73 | 67 | 71 | 65 | 59 | 52 | 48,5 | 72 |
| 76 | | | 79 | 73 | 69 | 64 | 68 | 62 | 57 | 51 | 46,5 | 76 |
| 80 | | | | 69 | 66 | 61 | 65 | 60 | 55 | 48,5 | 44,5 | 80 |
| 84 | | | | 67 | 62 | 57 | 62 | 57 | 52 | 47 | 42,5 | 84 |
| 88 | | | | | 58 | 54 | 59 | 55 | 50 | 45 | 41 | 88 |
| 92 | | | | | | 51 | 57 | 52 | 48 | 43 | 39 | 92 |
| 96 | | | | | | 49 | 54 | 49,5 | 45,5 | 41 | 37,5 | 96 |
| 100 | | | | | | | 51 | 47 | 43,5 | 39 | 35,5 | 100 |
| 104 | | | | | | | | 44,5 | 41,5 | 37 | 34 | 104 |
| 108 | | | | | | | | 43,5 | 39 | 35 | 32,5 | 108 |
| 112 | | | | | | | | | 37 | 33,5 | 31 | 112 |
| 116 | | | | | | | | | | 31,5 | 29,7 | 116 |
| 120 | | | | | | | | | | 30,5 | 28,5 | 120 |
| | | | | | | | | | | | 27,1 | 120 |

VKTAB 190084

| m | 114 m | | | | | | | | | | | m |
|-----|-------|------|------|------|------|------|------|------|-------|-------|-------|-----|
| | 54 m | 60 m | 66 m | 72 m | 78 m | 84 m | 90 m | 96 m | 102 m | 108 m | 114 m | |
| 24 | 152 | | | | | | | | | | | 24 |
| 26 | 149 | | | | | | | | | | | 26 |
| 28 | 146 | 135 | 123 | | | | | | | | | 28 |
| 30 | 143 | 132 | 122 | 110 | | | | | | | | 30 |
| 32 | 140 | 130 | 119 | 108 | 97 | | | | | | | 32 |
| 34 | 137 | 127 | 117 | 106 | 96 | 86 | 86 | | | | | 34 |
| 36 | 133 | 124 | 115 | 104 | 94 | 85 | 85 | 76 | 68 | | | 36 |
| 38 | 130 | 121 | 112 | 102 | 92 | 83 | 84 | 75 | 67 | 60 | | 38 |
| 40 | 127 | 118 | 110 | 100 | 90 | 82 | 83 | 74 | 66 | 60 | 53 | 40 |
| 44 | 120 | 116 | 108 | 98 | 89 | 80 | 81 | 73 | 65 | 59 | 53 | 44 |
| 48 | 114 | 110 | 103 | 94 | 85 | 77 | 78 | 71 | 64 | 58 | 51 | 48 |
| 52 | 108 | 105 | 98 | 90 | 82 | 74 | 76 | 68 | 61 | 56 | 50 | 52 |
| 56 | 102 | 99 | 93 | 86 | 78 | 71 | 73 | 66 | 59 | 54 | 48,5 | 56 |
| 60 | 98 | 94 | 88 | 82 | 74 | 68 | 70 | 64 | 57 | 53 | 47 | 60 |
| 64 | | 89 | 84 | 78 | 71 | 65 | 68 | 61 | 55 | 51 | 45,5 | 64 |
| 68 | | 85 | 79 | 74 | 68 | 62 | 65 | 59 | 53 | 49 | 44 | 68 |
| 72 | | 78 | 76 | 70 | 64 | 59 | 63 | 57 | 51 | 47,5 | 42,5 | 72 |
| 76 | | | 72 | 67 | 61 | 56 | 60 | 54 | 49,5 | 45,5 | 40,5 | 76 |
| 80 | | | | 63 | 58 | 53 | 57 | 52 | 47,5 | 44 | 39 | 80 |
| 84 | | | | 62 | 55 | 50 | 55 | 50 | 45,5 | 42,5 | 37,5 | 84 |
| 88 | | | | | 52 | 47,5 | 52 | 47,5 | 43,5 | 40,5 | 36 | 88 |
| 92 | | | | | | 45 | 50 | 45,5 | 41,5 | 38,5 | 34,5 | 92 |
| 96 | | | | | | 43,5 | 48 | 43,5 | 39,5 | 37 | 33 | 96 |
| 100 | | | | | | | 46 | 41,5 | 37,5 | 35 | 31,5 | 100 |
| 104 | | | | | | | | 39,5 | 36 | 33,5 | 30 | 104 |
| 108 | | | | | | | | 38,5 | 34 | 32 | 28,9 | 108 |
| 112 | | | | | | | | | 32,5 | 30,5 | 27,6 | 112 |
| 116 | | | | | | | | | | 29,2 | 26,4 | 116 |
| 120 | | | | | | | | | | 28,2 | 25,1 | 120 |
| | | | | | | | | | | | 23,8 | 120 |

VKTAB 190084

Traglasten am SDWVB-Auslegersystem
Lifting capacities on SDWVB boom/jib combination
Forces de levage en configuration SDWVB · Portate con sistema braccio SDWVB
Tablas de carga con sistema de pluma SDWVB · Грузоподъемность на стреловой системе SDWVB



Vorläufig
Préliminaire · Provisorio
Provisional · Временно
Preliminary

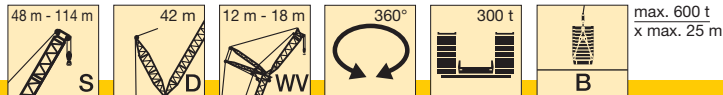
| m | 48 m | | | | 54 m | | | | 60 m | | | | m | |
|----|------|-----|------|-----|------|-----|------|-----|------|-----|------|-----|-----|----|
| | 12 m | | 18 m | | 12 m | | 18 m | | 12 m | | 18 m | | | |
| | 12° | 20° | 12° | 20° | 12° | 20° | 12° | 20° | 12° | 20° | 12° | 20° | | |
| 16 | 959 | 882 | | | 970 | | | | | 928 | | | 16 | |
| 18 | 906 | 841 | 930 | | 923 | 859 | 883 | | | 901 | 878 | 792 | 18 | |
| 20 | 858 | 805 | 892 | 745 | 879 | 825 | 858 | 759 | | 862 | 844 | 784 | 20 | |
| 22 | 816 | 773 | 838 | 711 | 826 | 791 | 811 | 726 | | 821 | 807 | 763 | 735 | 22 |
| 24 | 771 | 742 | 777 | 680 | 768 | 751 | 761 | 697 | | 763 | 763 | 735 | 714 | 24 |
| 26 | 719 | 702 | 716 | 653 | 713 | 711 | 707 | 668 | | 705 | 707 | 694 | 688 | 26 |
| 28 | 666 | 659 | 664 | 625 | 663 | 663 | 654 | 640 | | 653 | 653 | 647 | 648 | 28 |
| 30 | 615 | 616 | 617 | 594 | 613 | 614 | 610 | 610 | | 609 | 610 | 601 | 605 | 30 |
| 32 | 574 | 575 | 570 | 562 | 563 | 566 | 568 | 570 | | 565 | 567 | 563 | 564 | 32 |
| 34 | 533 | 534 | 529 | 530 | 528 | 529 | 526 | 531 | | 521 | 524 | 526 | 529 | 34 |
| 36 | 492 | 494 | 497 | 498 | 493 | 494 | 488 | 491 | | 488 | 489 | 489 | 493 | 36 |
| 38 | 462 | 463 | 464 | 467 | 458 | 459 | 460 | 461 | | 458 | 459 | 453 | 457 | 38 |
| 40 | 433 | 434 | 432 | 435 | 429 | 430 | 432 | 433 | | 428 | 429 | 428 | 429 | 40 |
| 44 | 378 | 380 | 384 | 386 | 382 | 382 | 379 | 380 | | 378 | 379 | 379 | 381 | 44 |
| 48 | 334 | 334 | 337 | 341 | 338 | 338 | 341 | 342 | | 338 | 338 | 337 | 338 | 48 |
| 52 | 290 | 290 | 301 | 303 | 301 | 300 | 304 | 305 | | 302 | 303 | 304 | 305 | 52 |
| 56 | 244 | 247 | 266 | 266 | 265 | 266 | 276 | 278 | | 274 | 274 | 272 | 273 | 56 |
| 60 | 194 | 193 | 228 | 232 | 231 | 237 | 249 | 251 | | 247 | 246 | 248 | 249 | 60 |
| 64 | | | 188 | 190 | 193 | 194 | 218 | 222 | | 220 | 218 | 224 | 224 | 64 |
| 68 | | | 148 | | | | 187 | 189 | | 193 | 189 | 200 | 204 | 68 |
| 72 | | | | | | | 146 | | | 147 | | 176 | 184 | 72 |
| 76 | | | | | | | | | | | | 148 | 149 | 76 |

VKTAB 190086 / 190088

| m | 66 m | | | | 72 m | | | | 78 m | | | | m | |
|----|------|-----|------|-----|------|-----|------|-----|------|-----|------|-----|-----|----|
| | 12 m | | 18 m | | 12 m | | 18 m | | 12 m | | 18 m | | | |
| | 12° | 20° | 12° | 20° | 12° | 20° | 12° | 20° | 12° | 20° | 12° | 20° | | |
| 18 | 813 | | | | 725 | | | | | | | | 18 | |
| 20 | 799 | 778 | 700 | | 718 | 697 | 626 | | | 642 | 623 | | 20 | |
| 22 | 776 | 760 | 691 | 659 | 707 | 688 | 621 | 592 | | 630 | 618 | 558 | 22 | |
| 24 | 744 | 736 | 683 | 654 | 697 | 681 | 606 | 588 | | 623 | 604 | 549 | 530 | 24 |
| 26 | 693 | 694 | 674 | 645 | 667 | 668 | 604 | 582 | | 613 | 602 | 544 | 523 | 26 |
| 28 | 643 | 646 | 634 | 633 | 628 | 629 | 589 | 577 | | 589 | 586 | 539 | 519 | 28 |
| 30 | 600 | 600 | 593 | 595 | 589 | 591 | 564 | 561 | | 565 | 562 | 523 | 516 | 30 |
| 32 | 561 | 562 | 554 | 557 | 553 | 554 | 539 | 537 | | 541 | 539 | 509 | 500 | 32 |
| 34 | 522 | 523 | 521 | 522 | 518 | 519 | 513 | 512 | | 510 | 511 | 495 | 487 | 34 |
| 36 | 482 | 485 | 487 | 490 | 483 | 485 | 483 | 485 | | 479 | 480 | 474 | 473 | 36 |
| 38 | 452 | 453 | 454 | 458 | 448 | 451 | 453 | 456 | | 448 | 449 | 447 | 450 | 38 |
| 40 | 426 | 427 | 421 | 426 | 420 | 421 | 423 | 427 | | 417 | 419 | 420 | 423 | 40 |
| 44 | 374 | 374 | 377 | 378 | 374 | 375 | 372 | 373 | | 369 | 371 | 367 | 371 | 44 |
| 48 | 334 | 335 | 333 | 335 | 328 | 330 | 333 | 335 | | 328 | 329 | 329 | 330 | 48 |
| 52 | 300 | 300 | 300 | 301 | 297 | 298 | 294 | 296 | | 291 | 293 | 294 | 296 | 52 |
| 56 | 269 | 270 | 271 | 272 | 267 | 267 | 268 | 270 | | 264 | 265 | 262 | 264 | 56 |
| 60 | 245 | 245 | 243 | 245 | 241 | 242 | 242 | 243 | | 238 | 237 | 239 | 241 | 60 |
| 64 | 220 | 221 | 223 | 224 | 220 | 220 | 218 | 220 | | 215 | 216 | 216 | 217 | 64 |
| 68 | 196 | 201 | 204 | 203 | 199 | 199 | 200 | 202 | | 197 | 197 | 196 | 197 | 68 |
| 72 | 172 | 178 | 184 | 183 | 180 | 179 | 182 | 183 | | 179 | 178 | 180 | 181 | 72 |
| 76 | 148 | 146 | 165 | 164 | 161 | 159 | 165 | 167 | | 163 | 163 | 164 | 165 | 76 |
| 80 | | | 144 | 147 | 141 | 142 | 151 | 152 | | 148 | 149 | 149 | 151 | 80 |
| 84 | | | 111 | | 110 | | 137 | 138 | | 134 | 134 | 133 | 139 | 84 |
| 88 | | | | | | | 114 | 113 | | 112 | 111 | 118 | 124 | 88 |
| 92 | | | | | | | | | | | | 104 | 104 | 92 |
| 96 | | | | | | | | | | | | 80 | | 96 |

VKTAB 190086 / 190088

Traglasten am SDWVB-Auslegersystem
Lifting capacities on SDWVB boom/jib combination
Forces de levage en configuration SDWVB · Portate con sistema braccio SDWVB
Tablas de carga con sistema de pluma SDWVB · Грузоподъемность на стреловой системе SDWVB



Vorläufig
Préliminaire · Provisorio
Provisional · Временно
Preliminary

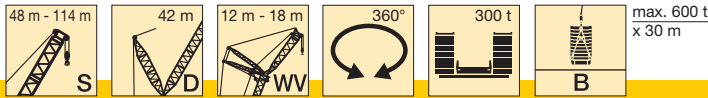
| m | 84 m | | | | 90 m | | | | 96 m | | | | m | |
|-----|------|-----|------|-----|------|-----|------|-----|------|-----|------|-----|-----|-----|
| | 12 m | | 18 m | | 12 m | | 18 m | | 12 m | | 18 m | | | |
| | 12° | 20° | 12° | 20° | 12° | 20° | 12° | 20° | 12° | 20° | 12° | 20° | | |
| 20 | 572 | | | | 519 | | | | | 459 | 449 | | | 20 |
| 22 | 569 | 555 | 501 | | 511 | 499 | 453 | | | 455 | 446 | 402 | | 22 |
| 24 | 559 | 547 | 496 | 476 | 500 | 495 | 446 | 429 | | 448 | 440 | 398 | 386 | 24 |
| 26 | 552 | 541 | 483 | 474 | 494 | 481 | 438 | 426 | | 444 | 436 | 392 | 384 | 26 |
| 28 | 540 | 536 | 483 | 468 | 488 | 480 | 433 | 420 | | 438 | 433 | 390 | 378 | 28 |
| 30 | 527 | 521 | 476 | 464 | 478 | 469 | 427 | 415 | | 424 | 421 | 387 | 376 | 30 |
| 32 | 514 | 509 | 468 | 456 | 471 | 465 | 417 | 412 | | 426 | 421 | 377 | 374 | 32 |
| 34 | 500 | 498 | 462 | 451 | 465 | 458 | 413 | 401 | | 426 | 421 | 377 | 374 | 34 |
| 36 | 472 | 473 | 456 | 446 | 453 | 452 | 407 | 398 | | 421 | 416 | 374 | 365 | 36 |
| 38 | 444 | 446 | 438 | 440 | 430 | 430 | 401 | 393 | | 409 | 409 | 369 | 363 | 38 |
| 40 | 417 | 418 | 415 | 417 | 408 | 408 | 386 | 386 | | 390 | 390 | 365 | 359 | 40 |
| 44 | 364 | 365 | 367 | 371 | 362 | 363 | 353 | 354 | | 353 | 354 | 337 | 338 | 44 |
| 48 | 327 | 328 | 324 | 326 | 323 | 325 | 320 | 322 | | 315 | 317 | 310 | 311 | 48 |
| 52 | 291 | 291 | 293 | 295 | 290 | 291 | 290 | 291 | | 286 | 287 | 282 | 284 | 52 |
| 56 | 261 | 262 | 262 | 264 | 258 | 258 | 261 | 263 | | 256 | 257 | 257 | 258 | 56 |
| 60 | 237 | 237 | 236 | 237 | 234 | 235 | 233 | 235 | | 227 | 229 | 231 | 233 | 60 |
| 64 | 213 | 213 | 215 | 216 | 212 | 213 | 212 | 214 | | 208 | 209 | 205 | 207 | 64 |
| 68 | 193 | 194 | 194 | 195 | 191 | 191 | 193 | 194 | | 189 | 189 | 189 | 190 | 68 |
| 72 | 177 | 177 | 176 | 178 | 174 | 175 | 175 | 175 | | 170 | 169 | 172 | 173 | 72 |
| 76 | 161 | 160 | 162 | 163 | 160 | 160 | 158 | 160 | | 154 | 156 | 155 | 156 | 76 |
| 80 | 145 | 147 | 148 | 148 | 145 | 144 | 145 | 147 | | 141 | 142 | 141 | 142 | 80 |
| 84 | 130 | 135 | 134 | 134 | 131 | 131 | 132 | 133 | | 128 | 128 | 129 | 130 | 84 |
| 88 | 114 | 119 | 122 | 121 | 119 | 118 | 119 | 121 | | 116 | 117 | 118 | 118 | 88 |
| 92 | 101 | 101 | 109 | 108 | 106 | 105 | 109 | 111 | | 106 | 107 | 107 | 107 | 92 |
| 96 | 78 | | 97 | 98 | 95 | 95 | 100 | 100 | | 97 | 96 | 97 | 98 | 96 |
| 100 | | | 82 | 82 | 80 | | 90 | 91 | | 87 | 87 | 89 | 89 | 100 |
| 104 | | | | | | | 79 | 78 | | 77 | 75 | 81 | 80 | 104 |
| 108 | | | | | | | 55 | | | 55 | | 72 | 71 | 108 |
| 112 | | | | | | | | | | | | 56 | | 112 |

VKTAB 190086 / 190088

| m | 102 m | | | | 108 m | | | | 114 m | | | | m | |
|-----|-------|-----|------|-----|-------|-----|------|-----|-------|------|------|------|------|-----|
| | 12 m | | 18 m | | 12 m | | 18 m | | 12 m | | 18 m | | | |
| | 12° | 20° | 12° | 20° | 12° | 20° | 12° | 20° | 12° | 20° | 12° | 20° | | |
| 22 | 410 | | | | 370 | | | | | 327 | | | | 22 |
| 24 | 407 | 399 | 359 | | 368 | 361 | 323 | | | 323 | 318 | 288 | | 24 |
| 26 | 398 | 395 | 357 | 346 | 365 | 359 | 323 | | | 323 | 317 | 285 | 279 | 26 |
| 28 | 395 | 387 | 351 | 344 | 358 | 354 | 322 | 313 | | 319 | 312 | 281 | 276 | 28 |
| 30 | 391 | 385 | 346 | 338 | 356 | 351 | 318 | 311 | | 316 | 312 | 281 | 276 | 30 |
| 32 | 383 | 381 | 343 | 334 | 353 | 348 | 316 | 307 | | 314 | 310 | 278 | 273 | 32 |
| 34 | 378 | 374 | 338 | 332 | 346 | 342 | 313 | 305 | | 310 | 308 | 276 | 270 | 34 |
| 36 | 373 | 370 | 333 | 326 | 342 | 339 | 305 | 303 | | 304 | 299 | 274 | 268 | 36 |
| 38 | 369 | 366 | 329 | 323 | 339 | 337 | 303 | 295 | | 300 | 298 | 268 | 266 | 38 |
| 40 | 357 | 358 | 326 | 320 | 336 | 334 | 300 | 295 | | 297 | 295 | 266 | 260 | 40 |
| 44 | 332 | 332 | 309 | 307 | 315 | 314 | 293 | 290 | | 285 | 284 | 261 | 256 | 44 |
| 48 | 307 | 308 | 291 | 291 | 294 | 295 | 276 | 276 | | 271 | 271 | 246 | 246 | 48 |
| 52 | 281 | 282 | 273 | 274 | 273 | 275 | 262 | 262 | | 256 | 257 | 236 | 236 | 52 |
| 56 | 254 | 255 | 252 | 255 | 249 | 250 | 247 | 248 | | 240 | 241 | 225 | 226 | 56 |
| 60 | 227 | 228 | 229 | 231 | 225 | 226 | 226 | 228 | | 219 | 220 | 212 | 214 | 60 |
| 64 | 203 | 205 | 206 | 207 | 201 | 201 | 204 | 206 | | 199 | 199 | 195 | 196 | 64 |
| 68 | 186 | 187 | 184 | 186 | 181 | 182 | 183 | 185 | | 178 | 178 | 178 | 179 | 68 |
| 72 | 169 | 170 | 169 | 171 | 165 | 166 | 165 | 167 | | 162 | 163 | 161 | 162 | 72 |
| 76 | 152 | 153 | 154 | 155 | 150 | 149 | 151 | 153 | | 147 | 148 | 147 | 149 | 76 |
| 80 | 139 | 140 | 139 | 139 | 134 | 134 | 137 | 138 | | 133 | 133 | 134 | 135 | 80 |
| 84 | 127 | 127 | 126 | 128 | 122 | 123 | 123 | 124 | | 119 | 120 | 121 | 122 | 84 |
| 88 | 115 | 114 | 116 | 116 | 112 | 111 | 112 | 114 | | 108 | 109 | 108 | 108 | 88 |
| 92 | 103 | 104 | 105 | 105 | 102 | 100 | 103 | 104 | | 99 | 99 | 98 | 99 | 92 |
| 96 | 95 | 95 | 95 | 95 | 91 | 90 | 93 | 94 | | 89 | 89 | 89 | 90 | 96 |
| 100 | 86 | 85 | 86 | 86 | 81 | 82 | 84 | 84 | | 79 | 79 | 80 | 81 | 100 |
| 104 | 78 | 77 | 78 | 78 | 70 | 73 | 74 | 74 | | 70 | 70 | 71 | 72 | 104 |
| 108 | 70 | 67 | 71 | 70 | 59 | 63 | 65 | 64 | | 62 | 60 | 63 | 64 | 108 |
| 112 | 54 | | 61 | 63 | 50 | 50 | 56 | 54 | | 53 | 51 | 56 | 56 | 112 |
| 116 | | | 47 | 49 | 43 | 43 | 47 | 47 | | 44,5 | 44,5 | 49,5 | 48,5 | 116 |
| 120 | | | 32 | | 29,1 | | 40,5 | 41 | | 38,5 | 38 | 42,5 | 42 | 120 |
| 124 | | | | | | | 29,4 | | | 27,2 | | 36 | 36 | 124 |
| 128 | | | | | | | | | | | | 28,5 | 29,9 | 128 |
| 132 | | | | | | | | | | | | 16,2 | | 132 |

VKTAB 190086 / 190088

Traglasten am SDWVB2-Auslegersystem
Lifting capacities on SDWVB2 boom/jib combination
Forces de levage en configuration SDWVB2 · Portate con sistema braccio SDWVB2
Tablas de carga con sistema de pluma SDWVB2 · Грузоподъемность на стреловой системе SDWVB2



Vorläufig
Préliminaire · Provisorio
Provisional · Временно
Preliminary

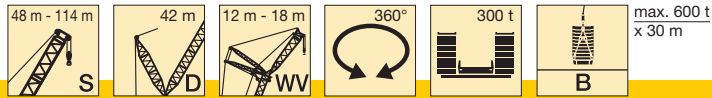
| m | 48 m | | | | 54 m | | | | 60 m | | | | m | |
|----|------|-----|------|-----|------|-----|------|-----|------|-----|------|-----|-----|----|
| | 12 m | | 18 m | | 12 m | | 18 m | | 12 m | | 18 m | | | |
| | 12° | 20° | 12° | 20° | 12° | 20° | 12° | 20° | 12° | 20° | 12° | 20° | | |
| 16 | 963 | 885 | | | 978 | | | | | 891 | | | 16 | |
| 18 | 909 | 844 | 934 | | 926 | 863 | 911 | | | 891 | 883 | 815 | 18 | |
| 20 | 861 | 808 | 896 | 746 | 882 | 828 | 891 | 761 | | 891 | 849 | 810 | 20 | |
| 22 | 821 | 775 | 844 | 713 | 841 | 795 | 861 | 729 | | 860 | 819 | 800 | 744 | 22 |
| 24 | 778 | 745 | 801 | 682 | 804 | 767 | 825 | 699 | | 820 | 790 | 788 | 718 | 24 |
| 26 | 744 | 719 | 759 | 655 | 765 | 739 | 779 | 673 | | 779 | 763 | 757 | 691 | 26 |
| 28 | 710 | 694 | 720 | 629 | 724 | 707 | 733 | 648 | | 735 | 735 | 717 | 668 | 28 |
| 30 | 675 | 670 | 680 | 607 | 683 | 674 | 689 | 624 | | 689 | 689 | 676 | 645 | 30 |
| 32 | 637 | 635 | 641 | 586 | 642 | 641 | 644 | 601 | | 642 | 643 | 637 | 619 | 32 |
| 34 | 599 | 599 | 603 | 564 | 603 | 604 | 599 | 579 | | 595 | 597 | 597 | 586 | 34 |
| 36 | 562 | 563 | 567 | 541 | 564 | 565 | 558 | 556 | | 559 | 560 | 558 | 554 | 36 |
| 38 | 530 | 531 | 531 | 517 | 525 | 526 | 526 | 527 | | 526 | 526 | 519 | 521 | 38 |
| 40 | 499 | 500 | 494 | 494 | 492 | 493 | 495 | 497 | | 492 | 493 | 492 | 492 | 40 |
| 44 | 438 | 439 | 444 | 445 | 440 | 440 | 436 | 438 | | 435 | 437 | 436 | 438 | 44 |
| 48 | 381 | 383 | 394 | 396 | 390 | 392 | 394 | 395 | | 391 | 391 | 390 | 391 | 48 |
| 52 | 325 | 328 | 347 | 350 | 352 | 355 | 352 | 354 | | 350 | 351 | 353 | 354 | 52 |
| 56 | 272 | 275 | 300 | 305 | 312 | 313 | 319 | 323 | | 319 | 319 | 317 | 318 | 56 |
| 60 | 217 | 214 | 256 | 259 | 265 | 266 | 287 | 292 | | 289 | 286 | 291 | 292 | 60 |
| 64 | | | 212 | 214 | 218 | 218 | 249 | 252 | | 252 | 253 | 265 | 265 | 64 |
| 68 | | | 155 | | | | 210 | 212 | | 215 | 215 | 236 | 236 | 68 |
| 72 | | | | | | | 167 | | | 171 | | 204 | 207 | 72 |
| 76 | | | | | | | | | | | | 170 | 171 | 76 |

VKTAB 190090 / 190092

| m | 66 m | | | | 72 m | | | | 78 m | | | | m | |
|----|------|-----|------|-----|------|-----|------|-----|------|-----|------|-----|-----|----|
| | 12 m | | 18 m | | 12 m | | 18 m | | 12 m | | 18 m | | | |
| | 12° | 20° | 12° | 20° | 12° | 20° | 12° | 20° | 12° | 20° | 12° | 20° | | |
| 18 | 791 | | | | 688 | | | | | | | | 18 | |
| 20 | 791 | 791 | 720 | | 688 | 688 | 643 | | | 636 | 636 | | 20 | |
| 22 | 791 | 791 | 713 | 679 | 688 | 688 | 639 | 609 | | 636 | 636 | 571 | 22 | |
| 24 | 791 | 788 | 708 | 676 | 688 | 688 | 633 | 607 | | 636 | 631 | 566 | 544 | 24 |
| 26 | 756 | 755 | 701 | 673 | 688 | 688 | 628 | 603 | | 636 | 625 | 562 | 541 | 26 |
| 28 | 717 | 716 | 676 | 666 | 683 | 675 | 619 | 600 | | 629 | 618 | 557 | 537 | 28 |
| 30 | 677 | 677 | 652 | 642 | 659 | 653 | 608 | 591 | | 619 | 609 | 551 | 533 | 30 |
| 32 | 636 | 636 | 625 | 619 | 625 | 625 | 597 | 581 | | 609 | 601 | 545 | 528 | 32 |
| 34 | 594 | 595 | 589 | 590 | 588 | 589 | 578 | 571 | | 576 | 577 | 539 | 523 | 34 |
| 36 | 553 | 555 | 554 | 556 | 551 | 553 | 547 | 548 | | 544 | 545 | 523 | 518 | 36 |
| 38 | 520 | 520 | 519 | 522 | 514 | 517 | 516 | 518 | | 512 | 513 | 498 | 497 | 38 |
| 40 | 490 | 491 | 483 | 489 | 484 | 485 | 484 | 488 | | 479 | 481 | 473 | 473 | 40 |
| 44 | 431 | 432 | 434 | 436 | 432 | 433 | 430 | 431 | | 428 | 429 | 423 | 426 | 44 |
| 48 | 387 | 389 | 386 | 388 | 381 | 383 | 386 | 388 | | 382 | 383 | 382 | 384 | 48 |
| 52 | 349 | 349 | 349 | 350 | 346 | 347 | 343 | 345 | | 340 | 342 | 343 | 345 | 52 |
| 56 | 314 | 315 | 316 | 317 | 312 | 312 | 314 | 315 | | 310 | 311 | 308 | 310 | 56 |
| 60 | 288 | 287 | 285 | 287 | 283 | 284 | 285 | 286 | | 280 | 280 | 282 | 283 | 60 |
| 64 | 261 | 260 | 263 | 264 | 260 | 260 | 258 | 260 | | 254 | 256 | 256 | 257 | 64 |
| 68 | 233 | 236 | 240 | 240 | 236 | 236 | 238 | 239 | | 234 | 234 | 233 | 234 | 68 |
| 72 | 206 | 209 | 217 | 218 | 214 | 217 | 218 | 218 | | 214 | 213 | 215 | 216 | 72 |
| 76 | 172 | 171 | 193 | 197 | 193 | 198 | 199 | 200 | | 195 | 196 | 197 | 197 | 76 |
| 80 | | | 167 | 168 | 167 | 167 | 180 | 183 | | 179 | 179 | 180 | 182 | 80 |
| 84 | | | 132 | | 132 | | 161 | 161 | | 161 | 159 | 165 | 168 | 84 |
| 88 | | | | | | | 134 | 133 | | 132 | 131 | 150 | 152 | 88 |
| 92 | | | | | | | | | | | | 129 | 129 | 92 |
| 96 | | | | | | | | | | | | 100 | | 96 |

VKTAB 190090 / 190092

Traglasten am SDWVB2-Auslegersystem
Lifting capacities on SDWVB2 boom/jib combination
Forces de levage en configuration SDWVB2 · Portate con sistema braccio SDWVB2
Tablas de carga con sistema de pluma SDWVB2 · Грузоподъемность на стреловой системе SDWVB2



Vorläufig
Préliminaire · Provisorio
Provisional · Временно
Preliminary

| m | 84 m | | | | 90 m | | | | 96 m | | | | m | |
|-----|------|-----|------|-----|------|-----|------|-----|------|-----|------|-----|---|-----|
| | 12 m | | 18 m | | 12 m | | 18 m | | 12 m | | 18 m | | | |
| | 12° | 20° | 12° | 20° | 12° | 20° | 12° | 20° | 12° | 20° | 12° | 20° | | |
| 20 | 582 | | | | 524 | | | | | 468 | 457 | | | 20 |
| 22 | 582 | 567 | 511 | | 520 | 507 | 456 | | | 464 | 455 | 409 | | 22 |
| 24 | 577 | 562 | 508 | 487 | 514 | 504 | 453 | 436 | | 464 | 455 | 409 | | 24 |
| 26 | 571 | 558 | 502 | 485 | 509 | 498 | 448 | 434 | 460 | 451 | 406 | | | 26 |
| 28 | 560 | 553 | 498 | 481 | 504 | 494 | 444 | 430 | 456 | 448 | 402 | 393 | | 28 |
| 30 | 557 | 546 | 491 | 477 | 496 | 488 | 440 | 426 | 452 | 444 | 399 | 391 | | 30 |
| 32 | 550 | 540 | 486 | 471 | 490 | 482 | 434 | 423 | 448 | 441 | 396 | 388 | | 32 |
| 34 | 540 | 534 | 480 | 467 | 483 | 477 | 429 | 418 | 443 | 437 | 392 | 385 | | 34 |
| 36 | 516 | 513 | 474 | 462 | 474 | 470 | 424 | 414 | 439 | 433 | 388 | 382 | | 36 |
| 38 | 492 | 490 | 460 | 456 | 458 | 455 | 419 | 409 | 429 | 427 | 385 | 379 | | 38 |
| 40 | 468 | 468 | 443 | 441 | 442 | 441 | 408 | 403 | 417 | 415 | 381 | 376 | | 40 |
| 44 | 420 | 422 | 410 | 409 | 410 | 411 | 387 | 384 | 392 | 392 | 364 | 373 | | 44 |
| 48 | 380 | 381 | 376 | 378 | 375 | 377 | 366 | 365 | 367 | 369 | 348 | 361 | | 48 |
| 52 | 339 | 339 | 341 | 343 | 339 | 340 | 338 | 339 | 334 | 335 | 330 | 346 | | 52 |
| 56 | 305 | 307 | 306 | 308 | 302 | 302 | 306 | 308 | 301 | 301 | 301 | 332 | | 56 |
| 60 | 278 | 279 | 277 | 279 | 275 | 276 | 274 | 276 | 268 | 270 | 273 | 303 | | 60 |
| 64 | 252 | 251 | 254 | 255 | 251 | 252 | 251 | 252 | 247 | 248 | 244 | 274 | | 64 |
| 68 | 230 | 231 | 231 | 231 | 227 | 227 | 230 | 231 | 225 | 225 | 225 | 246 | | 68 |
| 72 | 211 | 212 | 210 | 212 | 208 | 209 | 209 | 209 | 204 | 203 | 206 | 227 | | 72 |
| 76 | 193 | 192 | 195 | 195 | 192 | 192 | 191 | 192 | 187 | 188 | 188 | 207 | | 76 |
| 80 | 177 | 178 | 179 | 179 | 176 | 175 | 177 | 178 | 173 | 173 | 172 | 188 | | 80 |
| 84 | 163 | 164 | 163 | 165 | 161 | 162 | 163 | 163 | 158 | 158 | 159 | 173 | | 84 |
| 88 | 150 | 148 | 151 | 152 | 149 | 149 | 148 | 149 | 144 | 144 | 146 | 160 | | 88 |
| 92 | 128 | 126 | 138 | 140 | 138 | 136 | 137 | 138 | 133 | 132 | 133 | 146 | | 92 |
| 96 | 98 | | 122 | 123 | 122 | 121 | 125 | 127 | 122 | 120 | 123 | 134 | | 96 |
| 100 | | | 100 | 100 | 98 | | 114 | 115 | 111 | 110 | 114 | 124 | | 100 |
| 104 | | | | | | | 97 | 97 | 97 | 95 | 105 | 114 | | 104 |
| 108 | | | | | | | 73 | | 72 | | 92 | 104 | | 108 |
| 112 | | | | | | | | | | | 73 | 93 | | 112 |

VKTAB 190090 / 190092

| m | 102 m | | | | 108 m | | | | 114 m | | | | m | |
|-----|-------|-----|------|-----|-------|-----|------|-----|-------|------|------|------|-----|-----|
| | 12 m | | 18 m | | 12 m | | 18 m | | 12 m | | 18 m | | | |
| | 12° | 20° | 12° | 20° | 12° | 20° | 12° | 20° | 12° | 20° | 12° | 20° | | |
| 22 | 417 | | | | 375 | | | | | 331 | | | | 22 |
| 24 | 414 | 406 | 365 | | 372 | 366 | 330 | | | 329 | 323 | 291 | | 24 |
| 26 | 409 | 403 | 362 | 351 | 370 | 364 | 328 | | | 329 | 323 | 291 | | 26 |
| 28 | 406 | 398 | 359 | 349 | 367 | 361 | 327 | 317 | | 325 | 321 | 289 | 282 | 28 |
| 30 | 402 | 395 | 356 | 346 | 365 | 360 | 324 | 316 | | 323 | 319 | 286 | 280 | 30 |
| 32 | 394 | 391 | 353 | 343 | 363 | 358 | 322 | 314 | | 321 | 317 | 284 | 277 | 32 |
| 34 | 392 | 387 | 348 | 341 | 356 | 353 | 320 | 312 | | 317 | 315 | 282 | 276 | 34 |
| 36 | 388 | 384 | 344 | 337 | 356 | 352 | 317 | 311 | | 315 | 311 | 280 | 274 | 36 |
| 38 | 384 | 380 | 340 | 334 | 353 | 349 | 315 | 308 | | 312 | 309 | 277 | 272 | 38 |
| 40 | 377 | 374 | 337 | 331 | 350 | 347 | 313 | 307 | | 310 | 307 | 275 | 270 | 40 |
| 44 | 363 | 363 | 321 | 320 | 340 | 338 | 306 | 303 | | 298 | 297 | 270 | 266 | 44 |
| 48 | 350 | 351 | 320 | 317 | 329 | 329 | 299 | 297 | | 296 | 295 | 260 | 259 | 48 |
| 52 | 329 | 331 | 312 | 309 | 318 | 321 | 292 | 291 | | 290 | 290 | 259 | 256 | 52 |
| 56 | 299 | 300 | 295 | 295 | 294 | 295 | 285 | 286 | | 280 | 279 | 254 | 251 | 56 |
| 60 | 269 | 270 | 270 | 270 | 266 | 267 | 264 | 266 | | 258 | 257 | 244 | 243 | 60 |
| 64 | 242 | 244 | 244 | 245 | 239 | 239 | 241 | 243 | | 236 | 236 | 227 | 228 | 64 |
| 68 | 223 | 224 | 221 | 223 | 217 | 219 | 219 | 221 | | 214 | 215 | 211 | 212 | 68 |
| 72 | 204 | 204 | 204 | 205 | 199 | 200 | 200 | 202 | | 197 | 198 | 195 | 197 | 72 |
| 76 | 184 | 184 | 187 | 188 | 182 | 182 | 184 | 186 | | 181 | 181 | 180 | 182 | 76 |
| 80 | 170 | 171 | 170 | 170 | 165 | 165 | 169 | 169 | | 164 | 164 | 165 | 167 | 80 |
| 84 | 157 | 157 | 156 | 157 | 151 | 152 | 153 | 153 | | 148 | 149 | 151 | 152 | 84 |
| 88 | 144 | 143 | 144 | 145 | 140 | 140 | 140 | 142 | | 137 | 138 | 136 | 137 | 88 |
| 92 | 130 | 131 | 132 | 132 | 128 | 127 | 129 | 130 | | 126 | 126 | 125 | 126 | 92 |
| 96 | 121 | 121 | 121 | 121 | 116 | 116 | 119 | 119 | | 115 | 114 | 115 | 116 | 96 |
| 100 | 111 | 111 | 111 | 112 | 107 | 107 | 108 | 108 | | 104 | 104 | 106 | 106 | 100 |
| 104 | 102 | 101 | 102 | 102 | 98 | 97 | 99 | 99 | | 95 | 95 | 96 | 95 | 104 |
| 108 | 89 | 89 | 94 | 93 | 89 | 89 | 91 | 91 | | 87 | 87 | 87 | 87 | 108 |
| 112 | 71 | | 84 | 86 | 79 | 81 | 83 | 82 | | 79 | 78 | 80 | 80 | 112 |
| 116 | | | 71 | 70 | 67 | 66 | 75 | 75 | | 71 | 71 | 72 | 72 | 116 |
| 120 | | | 49.5 | | 46 | | 64 | 64 | | 61 | 60 | 65 | 65 | 120 |
| 124 | | | | | | | 47.5 | | | 44.5 | | 56 | 57 | 124 |
| 128 | | | | | | | | | | | | 45 | 44 | 128 |
| 132 | | | | | | | | | | | | 27.6 | | 132 |

VKTAB 190090 / 190092

Anmerkungen zu den Traglasttabellen

1. Für die Kranberechnungen gelten die DIN-Vorschriften lt. Gesetz gemäß Bundesarbeitsblatt von 2/85: Die Traglasten DIN/ISO entsprechen den geforderten Standsicherheiten nach DIN 15019, Teil 2 und ISO 4305 (Prüflast = 1,25 x Hublast + 0,1 x Auslegereigengewicht auf die Auslegerspitze reduziert). Für die Stahltragwerke gilt DIN 15018, Teil 3. Die bauliche Ausbildung des Krans entspricht DIN 15018, Teil 2 sowie der F.E.M.
2. Die Traglasten sind in Tonnen angegeben.
3. Das Gewicht des Lasthakens bzw. der Hakenflasche sowie der Anschlagmittel ist von den Traglasten abzuziehen.
4. Die Ausladungen sind von Mitte Drehkranz gemessen.
5. Kranbetrieb – wenn nicht speziell dokumentiert – zulässig bis: Staudruck 50 N/m², Windgeschwindigkeit 9 m/s.
Weitere Angaben über Windgeschwindigkeiten sind der Bedienungsanleitung zu entnehmen.
6. Die Aufstandsfläche muß eben und tragfähig sein.
7. Traglaständerungen vorbehalten.
8. Der Kran kann mit den in den Traglasttabellen angegebenen Lasten verfahren. Die Betriebsbedingungen sind der Bedienungsanleitung zu entnehmen.
9. Traglasten über 1350 t nur mit Zusatzeinrichtung.

Remarks referring to load charts

1. When calculating crane stresses and loads, German Industrial Standards (DIN) are applicable, in conformance with new German legislation (published 2/85). The lifting capacities (stability margin) DIN/ISO correspond to DIN 15019, part 2, and ISO 4305 (Tested load = 1.25 x lifting capacity + 0.1 x boom dead weight, reduced to the boom point). The crane's structural steel work is in accordance with DIN 15018, part 3. Design and construction of the crane comply with DIN 15018, part 2 and with F.E.M. regulations.
2. Lifting capacities are given in metric tons.
3. The weight of the load hook and hook blocks as well as of the lifting tackle must be deducted from the lifting capacities.
4. The working radii are measured from the slewing centreline.
5. Unless particularly specified, crane operation is permissible up to a dynamic pressure of 50 N/m², wind speed of 9 m/s.
For further details in respect to wind speeds refer to the operating instructions.
6. The subsoil must be even and of good bearing capacity.
7. Subject to modification of lifting capacities.
8. The crane can be displaced with suspended loads as stated in the load charts. Operating conditions must conform to the rules in the operating instructions.
9. Lifting capacities above 1350 t only with special equipment.

Remarques relatives aux tableaux des charges

1. La grue est calculée selon normes DIN conformément au décret fédéral 2/85. Les charges DIN/ISO respectent les sécurités au basculement requises par les normes DIN 15019, partie 2 et ISO 4305. La structure de la grue est conçue selon la norme DIN 15018, partie 3. La conception générale est réalisée selon la norme DIN 15018, partie 2, ainsi que selon les recommandations de la F.E.M.
2. Les charges sont indiquées en tonnes.
3. Les poids du crochet ou du moufle ainsi que des élingues sont à déduire des charges indiquées.
4. Les portées sont prises à partir de l'axe de rotation de la partie tournante.
5. Sinon spécifié autrement, le service de grue est admissible jusqu'à une pression dynamique de 50 N/m², vitesse de vent de 9 m/s.
D'autres indications concernant les vitesses de vent sont stipulées dans les instructions de service.
6. Le sol doit être plat et résistant.
7. Charges données sous réserve de modification.
8. La grue peut être déplacée avec les charges indiquées dans les tableaux des charges. Les conditions de service sont stipulées dans les instructions de service.
9. Forces de levage plus de 1350 t seulement avec équipement supplémentaire.

Osservazioni su tabella di portata

1. I calcoli gru vengono fatti secondo le normative DIN. Le portate DIN/ISO soddisfano le norme per la sicurezza DIN 15019, parte 2 e ISO 4305.
Per le strutture in acciaio è valida la norma DIN 15018, parte 3. La costruzione della gru soddisfa la normativa DIN 15018, parte 2 così come F.E.M.
2. Le portate sono indicate in tonnellate.
3. Il peso del gancio del bozzello nonché di ulteriori accessori vanno sottratti dalle portate.
4. Gli sbracci sono misurati dal centro della ralla.
5. Funzionamento della gru - se non specificatamente documentato – è ammissibile fino: portanza 50 N/m², velocità del vento 9 m/s. Ulteriori indicazioni relative alla velocità del vento sono indicate nel manuale uso della gru.
6. La superficie adibita al montaggio deve essere piana e in grado di sopportare il carico.
7. Con riserva di modifiche di portata.
8. La gru si può movimentare con carichi indicati nelle tabelle. Ulteriori condizioni di utilizzo vengono riportate nel manuale d'uso della gru.
9. Portate superiori a 1350 t solo con equipaggiamento addizionale

Observaciones relativas a las tablas de carga

1. Para los cálculos de grúa se aplican las normas DIN conforme a la ley según la hoja de servicios de la RFA del 2/85: Las capacidades de carga DIN/ISO corresponden a la estabilidad de seguridad requerida según DIN 15019, parte 2, e ISO 4305 (carga de prueba = 1,25 x carga de elevación + 0,1 x peso propio de la pluma reducido a la cabeza de pluma). Para las estructuras metálicas portantes se aplica la norma DIN 15018, parte 3. La configuración estructural de la grúa corresponde a DIN 15018, parte 2, y al F.E.M.
2. Las capacidades de carga se indican en toneladas.
3. El peso del gancho de carga o de la pasteca, así como de los accesorios de eslingado, se ha de restar de las capacidades de carga.
4. Los radios de trabajo se han medido desde el centro de la corona de giro.
5. Servicio de grúa - si no se documenta especialmente - admisible hasta: presión de remanso 50 N/m², velocidad del viento 9 m/s.
Para más datos sobre la velocidad del viento, consultar las instrucciones de servicio.
6. La superficie de apoyo ha de ser llana y firme.
7. Las capacidades de carga están sujetas a modificaciones.
8. La grúa puede desplazarse con las cargas indicadas en las tablas de carga. Las condiciones de servicio se indican en las instrucciones de servicio.
9. Cargas por encima de las 1350 t sólo con dispositivo adicional.

Примечания к таблицам грузоподъемности

1. Для расчетов крану действуют предписания DIN согласно закона в соответствии с федеральной рабочей расчетной таблицей от 2/85: грузоподъемности DIN/ISO соответствуют требуемым показателям устойчивости крана по DIN 15019, часть 2 и ISO 4305 (контрольный груз = 1,25 x поднимаемый груз + 0,1 x собственный вес стрелы, приведенный к концу стрелы). Для стальных несущих конструкций действует DIN 15018, часть 3. Конструктивное исполнение крана соответствует DIN 15018, часть 2, а также F.E.M.
2. Грузоподъемности указаны в тоннах.
3. Вес грузового крюка или крюковой подвески, а также строповочных средств должен быть вычтен из значения грузоподъемности.
4. Вылет измеряется от середины опорно-поворотного круга.
5. Работа крана разрешается (если в документах специально не указано иное) до: скоростного напора ветра 50 н/м², скорости ветра до 9 м/с.
Прочие данные скорости ветра в соответствии с руководством по эксплуатации.
6. Место установки должно быть ровным и прочным.
7. Возможны изменения значений грузоподъемности.
8. Кран может перемещаться с грузами, приведенными в таблицах грузоподъемности. Условия такого режима в соответствии с руководством по эксплуатации.
9. Грузы более 1350 т только с дополнительным устройством.